



OVER VIEW

EN / V12

SIBU | DESIGN

NA

Non-adhesive

SA

Self-adhesive

NEW

Product news

+ ▼

Entire panel length not shown in image

Continuous pattern

Pattern progression across panels

WET ROOM SUITABILITY



Unsuitable for wet rooms



Low wet room suitability



Limited suitability (remove splash water)



Good wet room suitability

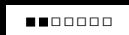


Suitable for use in wet-room areas

ABRASION RESISTANCE



Use only in decorative areas



Low abrasion resistance



Normal abrasion resistance



Good abrasion resistance



Very good abrasion resistance



Excellent abrasion resistance



Scratch resistant

AR

AR+

STRUCTURE-LINE (SL)	11
DECO-LINE DECORATION (DM)	27
DECO-LINE DISPLAY (DM)	45
MULTISTYLE (MS)	59
FABRIC-LINE (FL)	63
LEATHER-LINE (LL)	71
NATURE-LINE (NL)	77
SIBUGLAS (SG)	91

LEGEND 106

PRODUCT CHARACTERISTICS	107
PROCESSING	109
EXTRA EQUIPMENT & ACCESSORIES	111

PROCESSING INSTRUCTIONS GENERAL 113

BASIC RULES OF PROCESSING	114
SUBSTRATE PREPARATION FOR BONDING	116
BONDING OF SELF-ADHESIVE DESIGN PANELS (SA)	116
PROCESSING OF NON-ADHESIVE DESIGN PANELS (NA) WITH PUTTY ADHESIVE	117
BONDING WITH CARTRIDGE ADHESIVE	117
PRESS DECORATIVE PANELS WITH WHITE GLUE (PVA GLUE)	118
SELF-ADHESIVE DESIGN PANELS BONDED ONTO COATED WOOD BASED SHEETS INCLUDING EDGES AND MILLING	121
PROCESSING INFORMATION NATURE-LINE	122

STORAGE 123

TRANSPORT 123

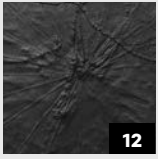
CLEANING 123

DISPOSAL 123

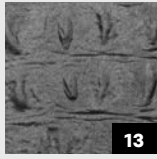
We create ambience.

With our art of laminating, we unite beauty and function by combining different materials. Always customer-oriented and flexible, we manufacture design elements of outstanding quality and thus ensure unique spatial experiences.

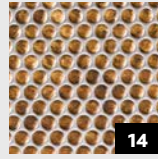
STRUCTURE-LINE



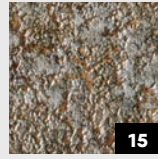
SL LOTUS
CLASSY Black



SL CROCO
CLASSY Black



SL RACE
Vintage Copper/
Silver



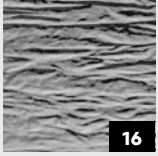
SL LAVA
VINTAGE Copper



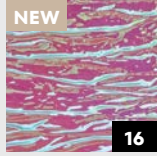
SL LAVA
VINTAGE Silver



SL LAVA
VINTAGE Gold



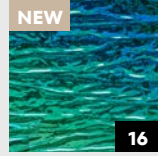
SL CRASHED
Silver



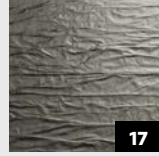
SL CRASHED
Hollywood



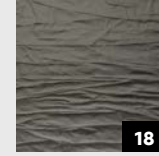
SL CRASHED
Hollywood Blue



SL CRASHED
Aqua



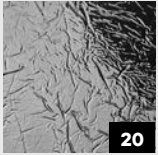
SL CRASHED
Old Platin



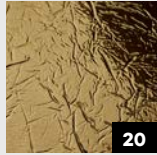
SL CRASHED
Smoke PF AR



SL CRASHED
CLASSY Black



SL CREPA
Silver



SL CREPA
Gold



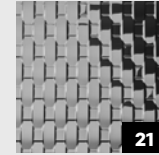
SL CREPA
Hollywood



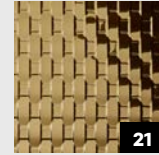
SL CREPA
Hollywood Blue



SL CREPA
Aqua



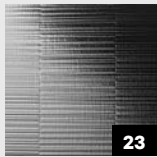
SL RATTAN 20
Silver



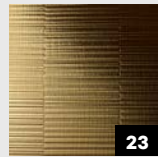
SL RATTAN 20
Gold



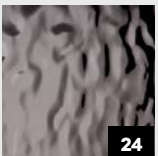
SL NOTCH
Smoke PF AR



SL NOTCH
Silver matt



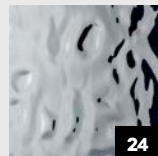
SL NOTCH
Gold matt



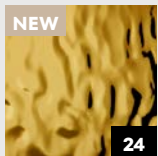
SL OCEAN
Anthracite AR



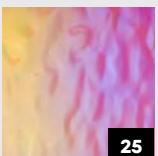
SL OCEAN
Iceblue AR



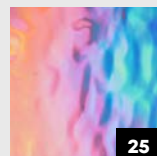
SL OCEAN
Silver



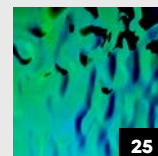
SL OCEAN
Gold



SL OCEAN
Hollywood



SL OCEAN
Hollywood Blue



SL OCEAN
Aqua

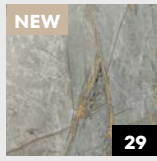


SL OCEAN
Rainbow

DECO-LINE DECORATION



DM Corten



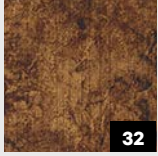
DM LIMESTONE Grey



DM CEMENT Light



DM MARBLE White



DM VINTAGE Copper



DM VINTAGE Silver



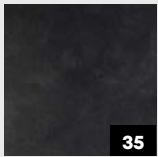
DM METALLIC USED Sand



DM LUXURY Bronze



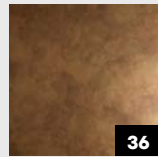
DM LUXURY Gold



DM CLASSY Black AR



DM CLASSY Gold



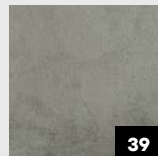
DM OXIDIZED Copper



DM Smoke PF AR



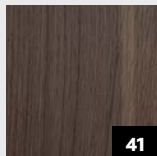
DM MONSOON VINTAGE Brown



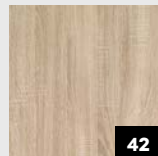
DM CONCRETE Grey AR



WL Carbonized Wood



WL Nutwood

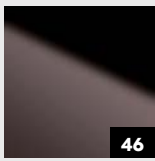


WL OAK TREE Light

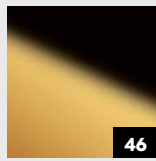
DECO-LINE DISPLAY



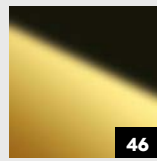
DM OPTICAL MIRROR
Fashion Grey AR



DM OPTICAL MIRROR
Anthracite AR



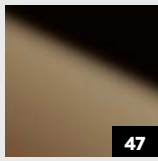
DM OPTICAL MIRROR
Gold AR



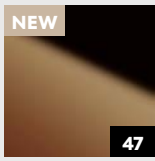
DM OPTICAL MIRROR
Brass AR



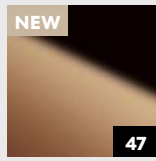
DM OPTICAL MIRROR
Silver AR



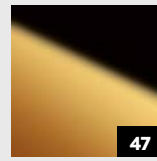
DM Brown AR



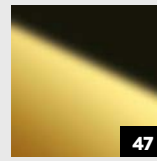
DM Red Brown AR



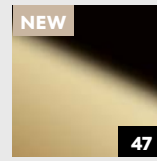
DM Rosegold AR



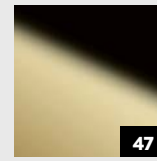
DM Gold AR



DM Brass AR



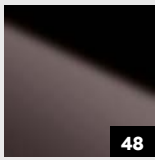
DM Gold 30 AR



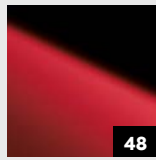
DM Fashion Gold AR



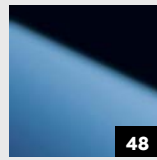
DM Fashion Grey AR



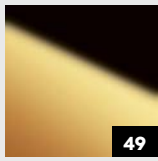
DM Anthracite AR



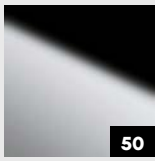
DM Fashion Red AR



DM Iceblue AR



DM Gold



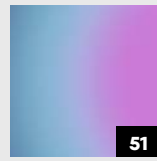
DM Silver



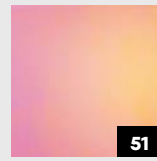
DM Silver/White



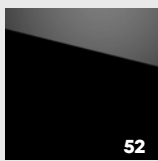
DM Aqua



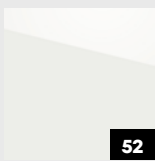
DM Hollywood Blue



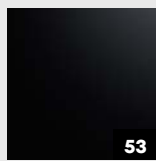
DM Hollywood



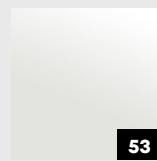
DM MAGIC Black AR



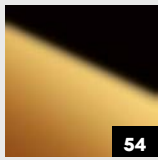
DM MAGIC White AR



DM Graphite Black matt



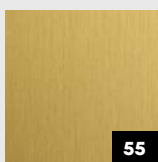
DM Snow White matt



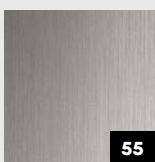
DM Gold MMS



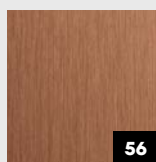
DM Silver MMS



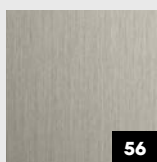
DM Brass brushed matt AR



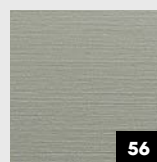
DM Grey brushed matt AR



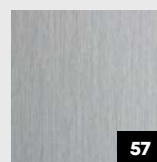
DM Copper brushed AR



DM Champagne brushed AR

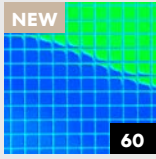


DM Green Steel brushed AR

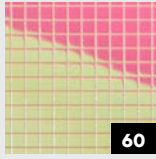


DM Silver brushed

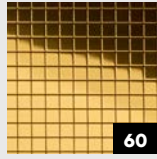
MULTISTYLE



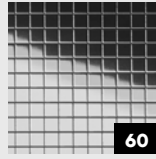
MS 5x5 flex
Aqua



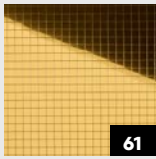
MS 5x5 flex
Hollywood



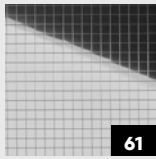
MS 5x5 flex
Gold



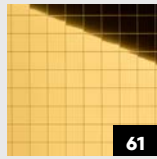
MS 5x5 flex
Silver



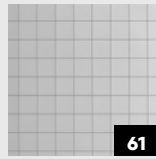
MS 10x10 flex
Gold



MS 10x10 flex
Silver



MS 20x20 flex
Gold



MS 20x20 flex
Silver

FABRIC-LINE



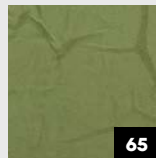
FL CUBE VELVET
Bordeaux



FL CUBE VELVET
Pearl



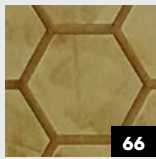
FL CREPA
VELVET
Volcano



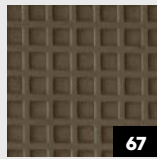
FL CREPA
VELVET
Avocado



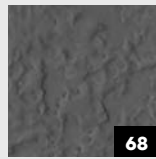
FL COMB
VELVET Pearl



FL COMB
VELVET Curry

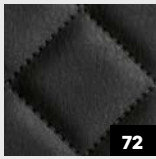


FL SQUARE 2
VELVET Mocha



FL LAVA VELVET
Volcano

LEATHER-LINE



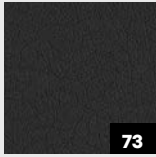
LL ROMBO 40
Nero matt



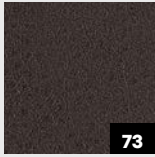
LL ROMBO 40
Creme matt



LL ROMBO 40
Bianco matt



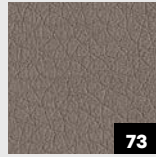
LL Charcoal
Dark



LL London Clay



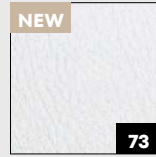
LL Charcoal
Light



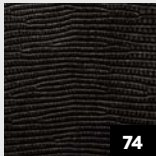
LL Dove Tale



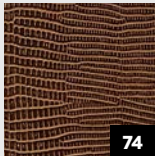
LL Stony
Ground



LL White



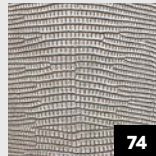
LL LEGUAN
Nero



LL LEGUAN
Copper



LL LEGUAN
Gold

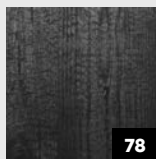


LL LEGUAN
Silver

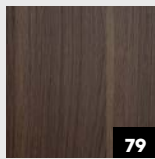


LL LEGUAN
Bianco

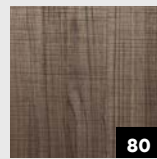
NATURE-LINE



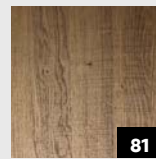
WL Carbonized
Wood Nature



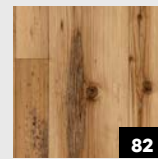
WL Nutwood
Nature



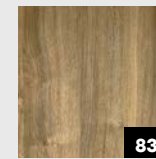
WL Nutwood
Country Nature



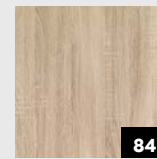
WL Sessile OAK
Nature



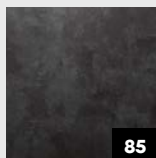
WL Sunwood
Nature



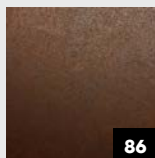
WL Willow OAK
Nature



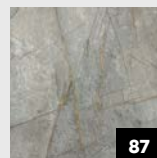
WL OAK TREE
Light Nature



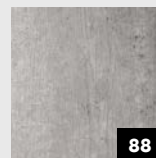
DM CEMENT
Dark Nature



DM Corten
Nature



DM LIMESTONE
Grey Nature



DM CEMENT
Light Nature

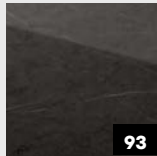


DM MARBLE
White Nature

SIBUGLAS



SG MARBLE
Black AR+



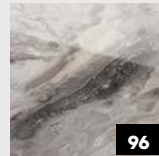
SG MARBLE
Grey AR+



SG MARBLE
Emperador AR+



SG MARBLE
Brown AR+



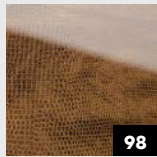
SG MARBLE
Alpine AR+



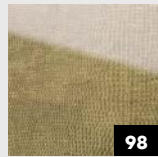
SG MARBLE
White AR+



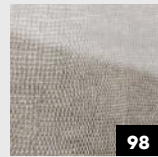
SG LEGUAN
Nero AR+



SG LEGUAN
Copper AR+



SG LEGUAN
Gold AR+



SG LEGUAN
Silver AR+



SG VINTAGE
Copper AR+



SG VINTAGE
Silver AR+



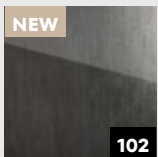
SG LUXURY
Bronze AR+



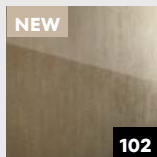
SG LUXURY
Gold AR+



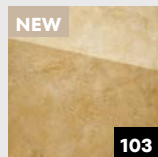
SG OLD Platin
AR+



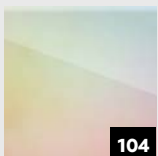
NEW
SG METALLIC
USED Steel AR+



NEW
SG METALLIC
USED Sand AR+



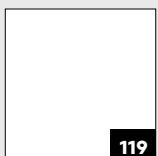
NEW
SG CLASSY
Gold AR+



SG Hollywood

SUITABLE BALANCING SHEETS

for PVA bonding



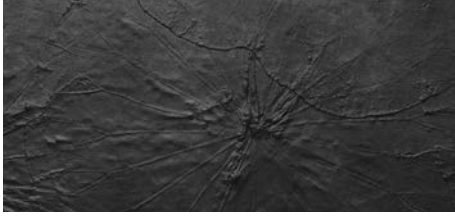
119
suitable
balancing sheet



STRUCTURE LINE



More structure for furniture and walls: harmonious colours and unique designs of our STRUCTURE-LINE make every surface an eye-catcher and unleash three-dimensional effects. Whether rattan, ocean or concrete look - these design panels provide a special kind of visual and haptic experience.



SL LOTUS CLASSY Black
2600 x 1000 | NA 24934 | SA 24963

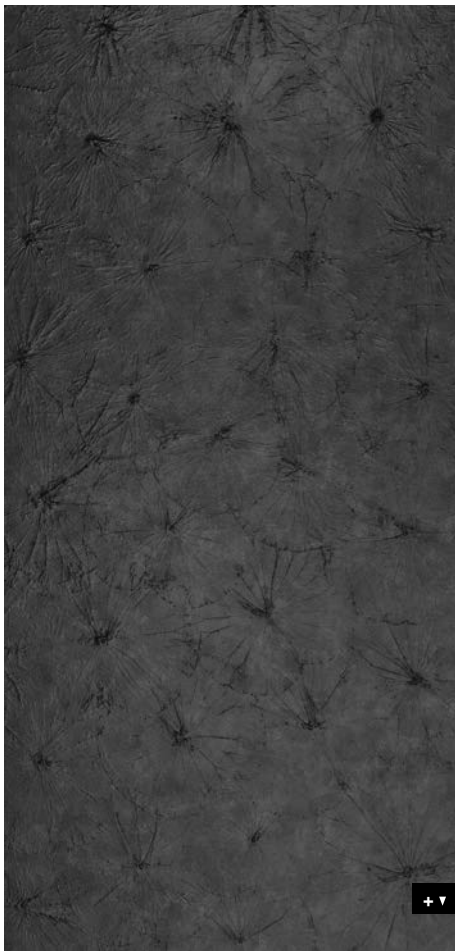


□ SL LOTUS CLASSY Black

STRUCTURE-LINE

SL LOTUS CLASSY Black

2600 x 1000



PRODUCT CHARACTERISTICS

	NA	SA
Surface material*	Druck	
Base material	HIPS	
Material thickness mm	0,8	0,93
Max. relief height mm	3,3	3,43
Temperature resistance	until 50 °C	
Wet room suitability	■■■■□□	
Abrasion resistance	■■■■□□□□	
Rolled packable Carton 480 x 480 mm, lay rolled goods flat upon receipt	✓ decor side outside, max. 6 pcs/carton	✓ decor side inside, max. 6 pcs/carton
Smallest bending radius mm	150	
Weight/panel kg	~ 2,1	~ 2,7

* The product is delivered without a protective film.

EXTRA EQUIPMENT | ACCESSORIES

	NA	SA
PVA pre-treatment	✓	—
Special sizes	—	
Further thicknesses	—	

PROCESSING

	NA	SA
Cutting, punching	✓	✓
Drilling	✓	✓
Sawing	✓	—
Milling	✓	—
Laser cutting	✓	✓
Hot bending	✓	—
PVA pressing	✓	—
Digital printing	✓*	
Screen printing	—	

* own printing test required, samples are gladly provided.

	NA	SA
Magnetic from 3 sheets	✓	
Cuttings	✓	
Flammability ASTM E84	✓	
Flammability EN13501-1	✓	



SL CROCO CLASSY Black
2600 x 1000 | NA 24935 | SA 24964



□ SL CROCO CLASSY Black

2600 x 1000



STRUCTURE-LINE

SL CROCO

PRODUCT CHARACTERISTICS

	NA	SA
Surface material*	Druck	
Base material	HIPS	
Material thickness mm	0,8	1,04
Max. relief height mm	2,4	2,64
Temperature resistance	until 50 °C	
Wet room suitability	■■■□□	
Abrasion resistance	■■■□□□□	
Rolled packable Carton 480 x 480 mm, lay rolled goods flat upon receipt	✓ decor side outside, max. 6 pcs/carton	✓ decor side inside, max. 6 pcs/carton
Smallest bending radius mm	150	
Weight/panel kg	~ 2,1	~ 2,7

* The product is delivered without a protective film.

EXTRA EQUIPMENT | ACCESSORIES

	NA	SA
PVA pre-treatment	✓	—
Special sizes	—	
Further thicknesses	—	

PROCESSING

	NA	SA
Cutting, punching	✓	✓
Drilling	✓	✓
Sawing	✓	—
Milling	✓	—
Laser cutting	✓	✓
Hot bending	✓	—
PVA pressing	✓	—
Digital printing	✓*	
Screen printing	—	

* own printing test required, samples are gladly provided.

	NA	SA
Magnetic from 3 sheets	✓	
Cuttings	✓	
Flammability ASTM E84	✓	
Flammability EN13501-1	✓	



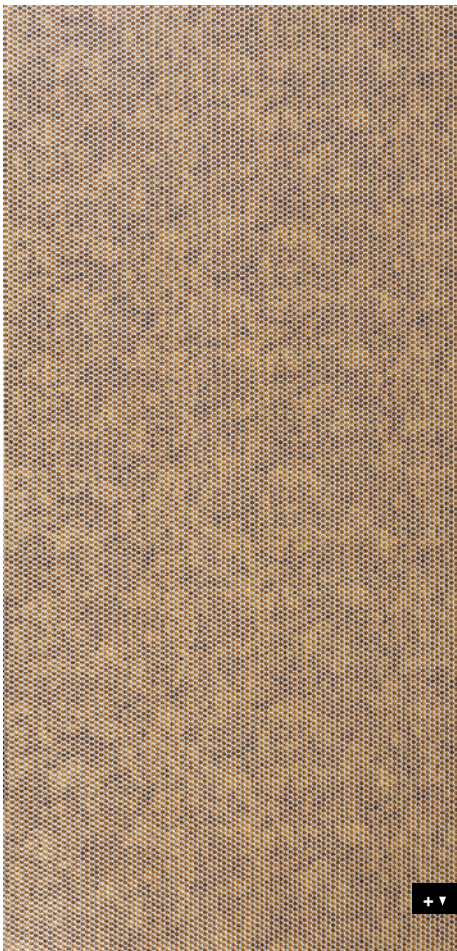
SL RACE VINTAGE Copper/Silver
2600 x 1000 | NA 17240 | SA 17241



□ SL RACE
VINTAGE Copper/Silver

Photo Wilhelm Radinger

2600 x 1000



STRUCTURE-LINE

SL RACE

PRODUCT CHARACTERISTICS

	NA	SA
Surface material*	Print	
Base material	HIPS	
Material thickness mm	0,8	0,93
Max. relief height mm	1,5	1,63
Temperature resistance	until 50 °C	
Wet room suitability	■■■■□□	
Abrasion resistance	■■□□□□□□	
Rolled packable Carton 480 x 480 mm, lay rolled goods flat upon receipt	✓ decor side outside, max. 6 pcs/carton	✓ decor side inside, max. 6 pcs/carton
Smallest bending radius mm	150	
Weight/panel kg	~ 2,2	~ 2,6

* The product is delivered without a protective film.

EXTRA EQUIPMENT | ACCESSORIES

	NA	SA
PVA pre-treatment	✓	—
Special sizes	—	
Further thicknesses	—	

PROCESSING

	NA	SA
Cutting, punching	✓	✓
Drilling	✓	✓
Sawing	✓	—
Milling	✓	—
Laser cutting	✓	✓
Hot bending	✓	—
PVA pressing	✓	—
Digital printing	—	
Screen printing	—	

	NA	SA
Magnetic from 3 sheets	✓	
Cuttings	✓	
Flammability ASTM E84	✓	
Flammability EN13501-1	✓	





SL LAVA VINTAGE Copper
2600 x 1000 | NA 28893 | SA 28894



SL LAVA VINTAGE Silver
2600 x 1000 | NA 24968 | SA 24972



SL LAVA VINTAGE Gold
2600 x 1000 | NA 24969 | SA 24973



2600 x 1000



STRUCTURE-LINE

SL LAVA

PRODUCT CHARACTERISTICS

	NA	SA
Surface material*	Print	
Base material	HIPS	
Material thickness mm	0,8	1,04
Max. relief height mm	1,9	2,14
Temperature resistance	until 50 °C	
Wet room suitability	■■■■□□	
Abrasion resistance	■■■■□□□□	
Rolled packable Carton 480 x 480 mm, lay rolled goods flat upon receipt	✓ decor side outside, max. 6 pcs/carton	✓ decor side inside, max. 6 pcs/carton
Smallest bending radius mm	150	
Weight/panel kg	~ 2,4	~ 3,0

* The product is delivered without a protective film.

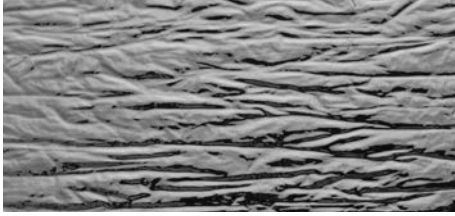
EXTRA EQUIPMENT | ACCESSORIES

	NA	SA
PVA pre-treatment	✓	—
Special sizes	—	
Further thicknesses	—	

PROCESSING

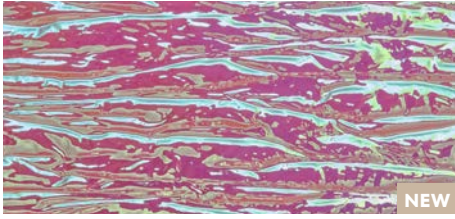
	NA	SA
Cutting, punching	✓	✓
Drilling	✓	✓
Sawing	✓	—
Milling	✓	—
Laser cutting	✓	✓
Hot bending	✓	—
PVA pressing	✓	—
Digital printing	—	
Screen printing	—	

	NA	SA
Magnetic from 3 sheets	✓	
Cuttings	✓	
Flammability ASTM E84	✓	
Flammability EN13501-1	✓	



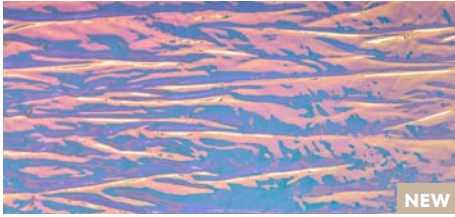
SL CRASHED Silver

2600 x 1000 | NA 19335 | SA 19346



SL CRASHED Hollywood

2600 x 1000 | NA 25162 | SA 29018



SL CRASHED Hollywood Blue

2600 x 1000 | NA 28815 | SA 29019



SL CRASHED Aqua

2600 x 1000 | NA 24099 | SA 29084

2600 x 1000

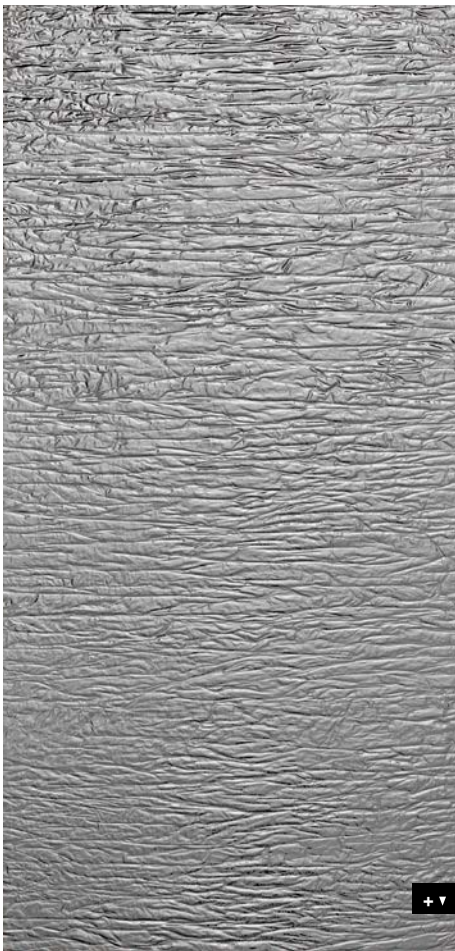


Photo: SIBU DESIGN Azerbaijan

□ SL CRASHED Silver

STRUCTURE-LINE

SL CRASHED

PRODUCT CHARACTERISTICS

	NA	SA
Surface material	PET	
Base material	HIPS	
Material thickness mm	1,0	1,24
Max. relief height mm	2,2	2,44
Temperature resistance	until 50 °C	
Wet room suitability	■■■■□□	
Abrasion resistance	■■□□□□□□	
Rolled packable Carton 480 x 480 mm, lay rolled goods flat upon receipt	✓ decor side outside, max. 6 pcs/carton	✓ decor side inside, max. 6 pcs/carton
Smallest bending radius mm	150	
Weight/panel kg	~2,8	~3,4

PROCESSING

	NA	SA
Cutting, punching	✓	✓
Drilling	✓	✓
Sawing	✓	—
Milling	✓	—
Laser cutting	✓	✓
Hot bending	✓	—
PVA pressing	✓	—
Digital printing	✓*	
Screen printing	—	

* own printing test required, samples are gladly provided.

EXTRA EQUIPMENT | ACCESSORIES

	NA	SA
PVA pre-treatment	✓	—
Special sizes	—	
Further thicknesses	—	

	NA	SA
Magnetic from 3 sheets	✓	
Cuttings	✓	
Flammability ASTM E84	✓	
Flammability EN13501-1	✓	



SL CRASHED OLD Platin
2600 x 1000 | NA 19519 | SA 19523



□ SL CRASHED OLD Platin

Photo: Dekomat AG - Creative Expert

2600 x 1000



STRUCTURE-LINE

SL CRASHED OLD Platin

PRODUCT CHARACTERISTICS

	NA	SA
Surface material*	Print	
Base material	HIPS	
Material thickness mm	1,0	1,24
Max. relief height mm	2,2	2,44
Temperature resistance	until 50 °C	
Wet room suitability	■■■■□	
Abrasion resistance	■■■■□□□	
Rolled packable Carton 480 x 480 mm, lay rolled goods flat upon receipt	✓ decor side outside, max. 6 pcs/carton	✓ decor side inside, max. 6 pcs/carton
Smallest bending radius mm	150	
Weight/panel kg	~ 2,1	~ 2,7

* The product is delivered without a protective film.

EXTRA EQUIPMENT | ACCESSORIES

	NA	SA
PVA pre-treatment	✓	—
Special sizes	—	
Further thicknesses	—	

PROCESSING

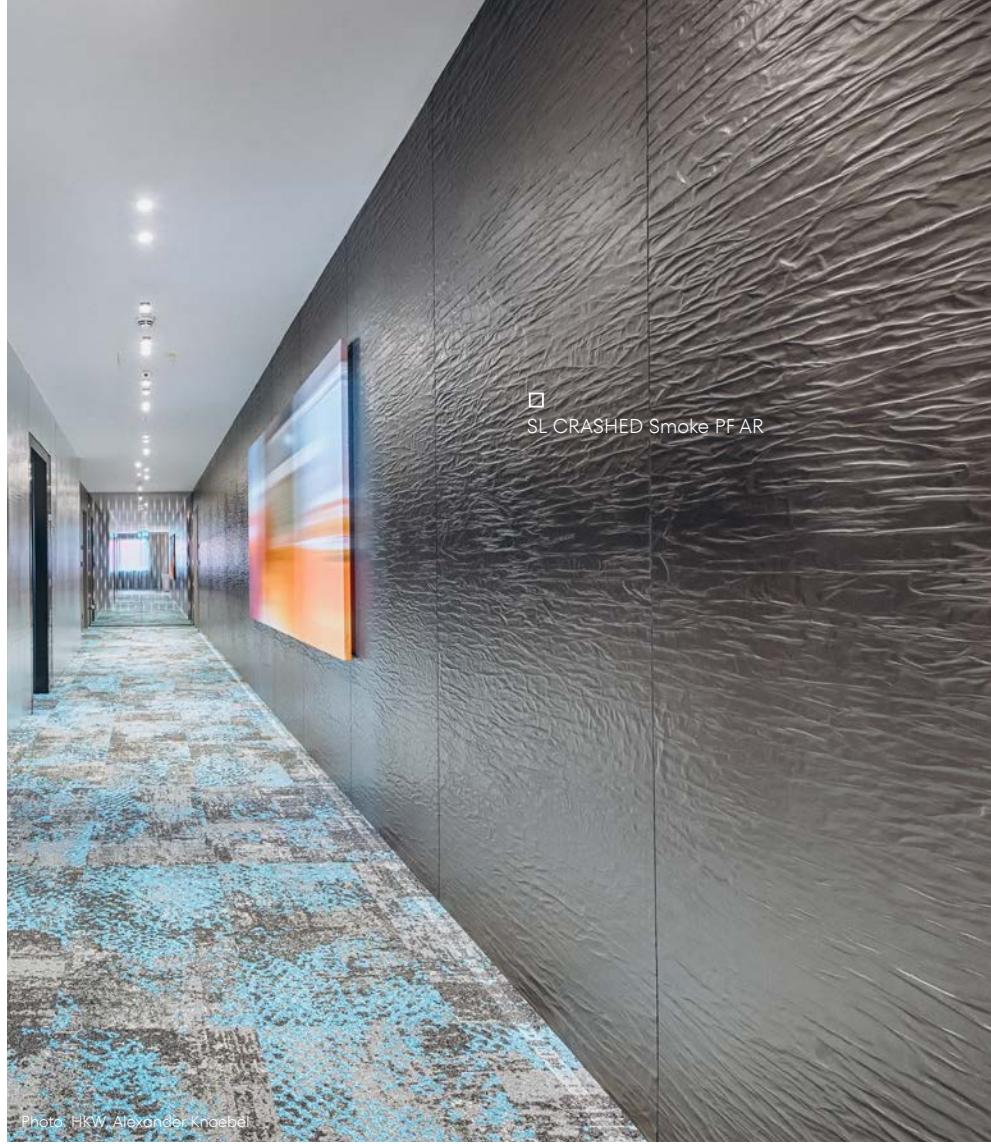
	NA	SA
Cutting, punching	✓	✓
Drilling	✓	✓
Sawing	✓	—
Milling	✓	—
Laser cutting	✓	✓
Hot bending	✓	—
PVA pressing	✓	—
Digital printing	✓*	
Screen printing	—	

* own printing test required, samples are gladly provided.

	NA	SA
Magnetic from 3 sheets	✓	
Cuttings	✓	
Flammability ASTM E84	✓	
Flammability EN13501-1	✓	



SL CRASHED Smoke PF AR
2600 x 1000 | NA 24908 | SA 24940



☐ SL CRASHED Smoke PF AR

Photo: HKW, Alexander Knoebel

STRUCTURE-LINE abrasion-resistant

SL CRASHED Smoke PF AR

2600 x 1000



PRODUCT CHARACTERISTICS

	NA	SA
Surface material*	Print	
Base material	HIPS	
Material thickness mm	0,8	1,04
Max. relief height mm	2,2	2,44
Temperature resistance	until 50 °C	
Wet room suitability	■■■■□	
Abrasion resistance	■■■■■□□	
Rolled packable Carton 480 x 480 mm, lay rolled goods flat upon receipt	✓ decor side outside, max. 6 pcs/carton	✓ decor side inside, max. 6 pcs/carton
Smallest bending radius mm	150	
Weight/panel kg	~ 2,1	~ 2,7

* The product is delivered without a protective film.

EXTRA EQUIPMENT | ACCESSORIES

	NA	SA
PVA pre-treatment	✓	—
Special sizes	—	
Further thicknesses	—	

PROCESSING

	NA	SA
Cutting, punching	✓	✓
Drilling	✓	✓
Sawing	✓	—
Milling	✓	—
Laser cutting	✓	✓
Hot bending	✓	—
PVA pressing	✓	—
Digital printing	✓*	
Screen printing	—	

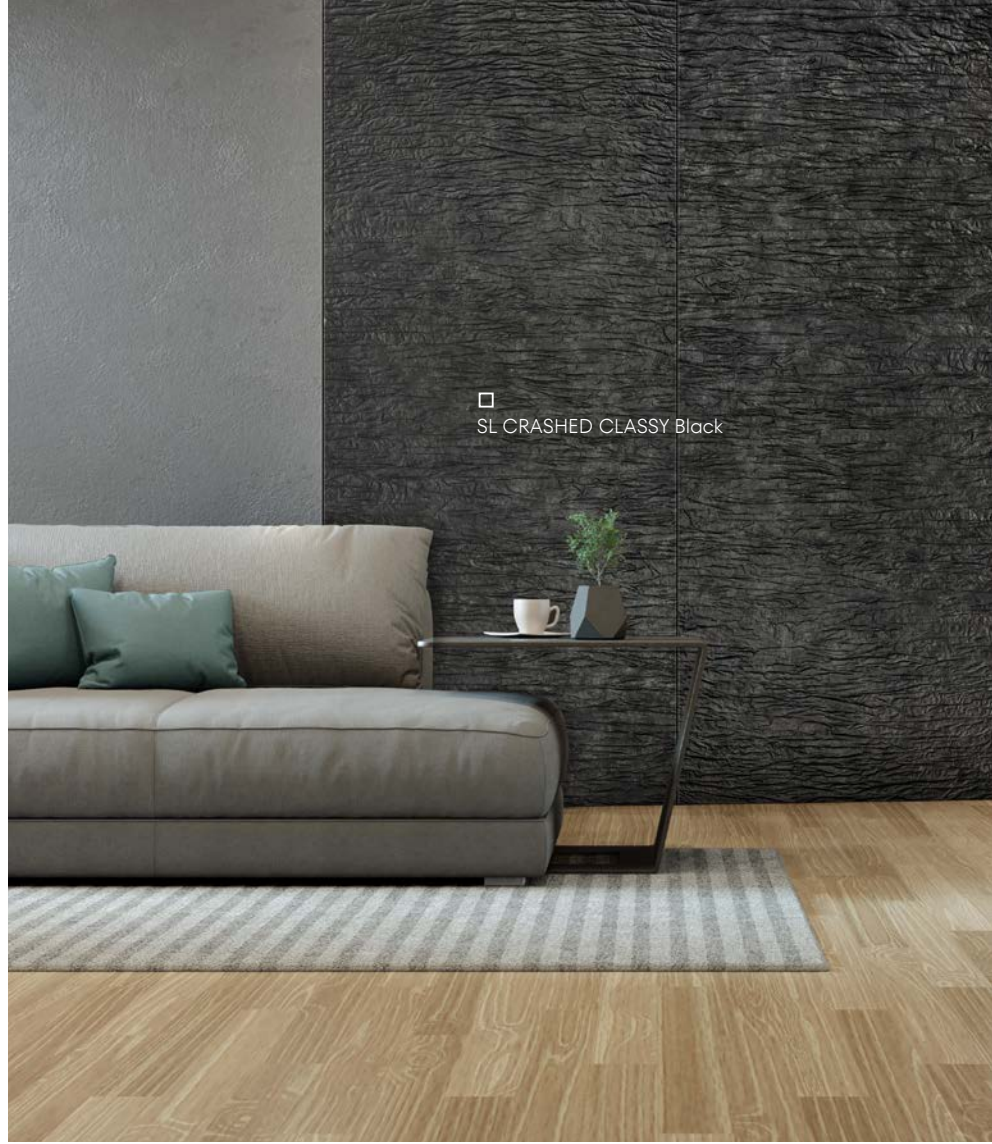
* own printing test required, samples are gladly provided.

	NA	SA
Magnetic from 3 sheets	✓	
Cuttings	✓	
Flammability ASTM E84	✓	
Flammability EN13501-1	✓	





SL CRASHED CLASSY Black
2600 x 1000 | NA 24909 | SA 24941



□ SL CRASHED CLASSY Black

STRUCTURE-LINE

SL CRASHED CLASSY Black

2600 x 1000



PRODUCT CHARACTERISTICS

	NA	SA
Surface material*	Print	
Base material	HIPS	
Material thickness mm	0,8	1,04
Max. relief height mm	2,2	2,44
Temperature resistance	until 50 °C	
Wet room suitability	■■■■□□	
Abrasion resistance	■■■■□□□□	
Rolled packable Carton 480 x 480 mm, lay rolled goods flat upon receipt	✓ decor side outside, max. 6 pcs/carton	✓ decor side inside, max. 6 pcs/carton
Smallest bending radius mm	150	
Weight/panel kg	~ 2,1	~ 2,7

* The product is delivered without a protective film.

EXTRA EQUIPMENT | ACCESSORIES

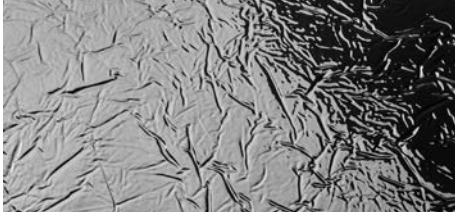
	NA	SA
PVA pre-treatment	✓	—
Special sizes	—	
Further thicknesses	—	

PROCESSING

	NA	SA
Cutting, punching	✓	✓
Drilling	✓	✓
Sawing	✓	—
Milling	✓	—
Laser cutting	✓	✓
Hot bending	✓	—
PVA pressing	✓	—
Digital printing	✓*	
Screen printing	—	

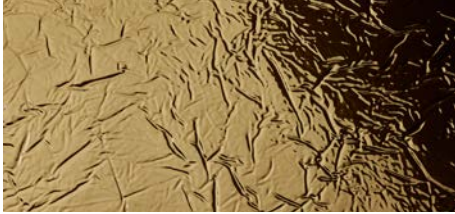
* own printing test required, samples are gladly provided.

	NA	SA
Magnetic from 3 sheets	✓	
Cuttings	✓	
Flammability ASTM E84	✓	
Flammability EN13501-1	✓	



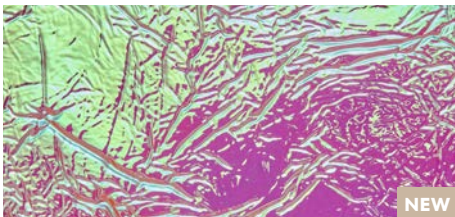
SL CREPA Silver

2600 x 1000 | NA 24913 | SA 24945



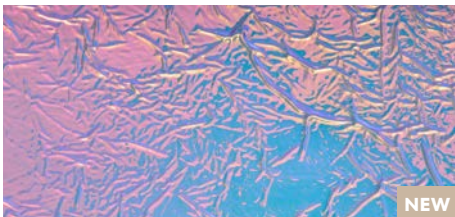
SL CREPA Gold

2600 x 1000 | NA 24912 | SA 24944



SL CREPA Hollywood

2600 x 1000 | NA 28788 | SA 29020



SL CREPA Hollywood Blue

2600 x 1000 | NA 28789 | SA 29021



SL CREPA Aqua

2600 x 1000 | NA 24086 | SA 29085

2600 x 1000



□ SL CREPA Silver

STRUCTURE-LINE

SL CREPA

PRODUCT CHARACTERISTICS

	NA	SA
Surface material	PET	
Base material	HIPS	
Material thickness mm	0,8	1,04
Max. relief height mm	1,7	1,94
Temperature resistance	until 50 °C	
Wet room suitability	■■■■□□	
Abrasion resistance	■■□□□□□□	
Rolled packable Carton 480 x 480 mm, lay rolled goods flat upon receipt	✓ decor side outside, max. 6 pcs/carton	✓ decor side inside, max. 6 pcs/carton
Smallest bending radius mm	150	
Weight/panel kg	~ 2,2	~ 2,8

PROCESSING

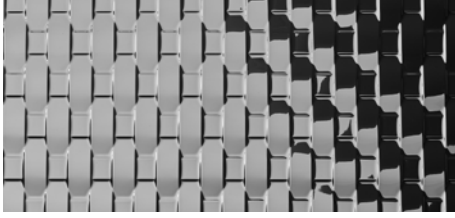
	NA	SA
Cutting, punching	✓	✓
Drilling	✓	✓
Sawing	✓	—
Milling	✓	—
Laser cutting	✓	✓
Hot bending	✓	—
PVA pressing	✓	—
Digital printing Gold	On request	
Digital printing Silver	✓*	
Screen printing	—	

* own printing test required, samples are gladly provided.

EXTRA EQUIPMENT | ACCESSORIES

	NA	SA
PVA pre-treatment	✓	—
Special sizes	—	
Further thicknesses	—	

	NA	SA
Magnetic from 3 sheets	✓	
Cuttings	✓	
Flammability ASTM E84	✓	
Flammability EN13501-1	✓	



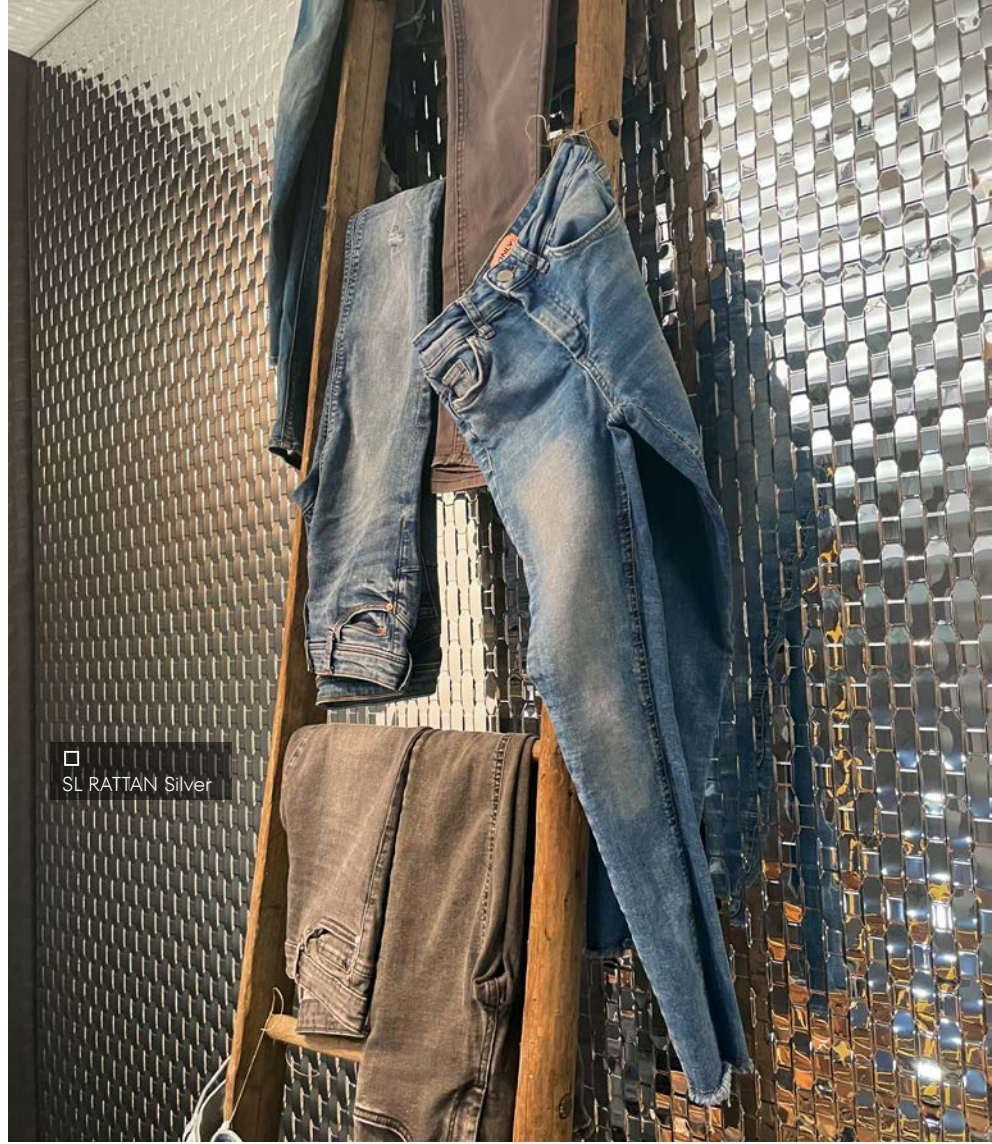
SL RATTAN Silver

2600 x 1000 | NA 24922 | SA 24956



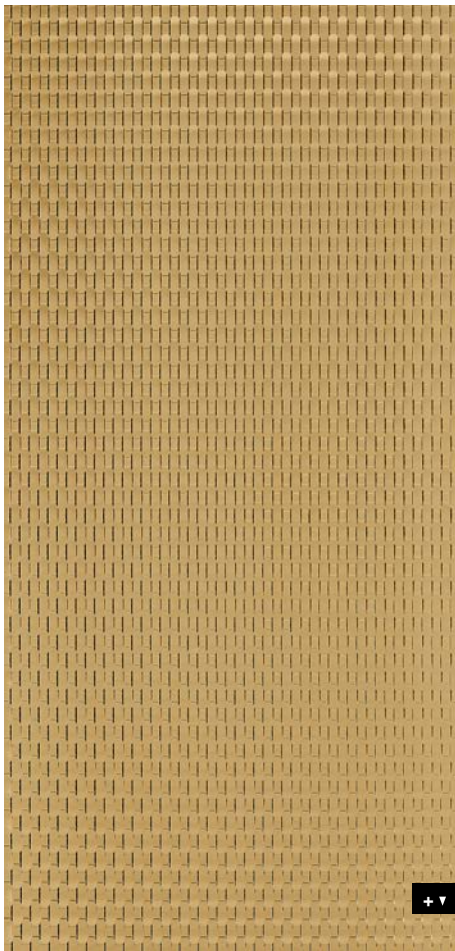
SL RATTAN Gold

2600 x 1000 | NA 24921 | SA 24955



□ SL RATTAN Silver

2600 x 1000



STRUCTURE-LINE

SL RATTAN

PRODUCT CHARACTERISTICS

	NA	SA
Surface material	PET	
Base material	HIPS	
Material thickness mm	0,8	1,04
Max. relief height mm	2,4	2,64
Temperature resistance	until 50 °C	
Wet room suitability	■■■■□□	
Abrasion resistance	■■□□□□	
Rolled packable Carton 480 x 480 mm, lay rolled goods flat upon receipt	✓ decor side outside, max. 6 pcs/carton	✓ decor side inside, max. 6 pcs/carton
Smallest bending radius mm	150	
Weight/panel kg	~ 2,2	~ 2,8

PROCESSING

	NA	SA
Cutting, punching	✓	✓
Drilling	✓	✓
Sawing	✓	—
Milling	✓	—
Laser cutting	✓	✓
Hot bending	✓	—
PVA pressing	✓	—
Digital printing Gold	On request	
Digital printing Silver	✓*	
Screen printing	—	

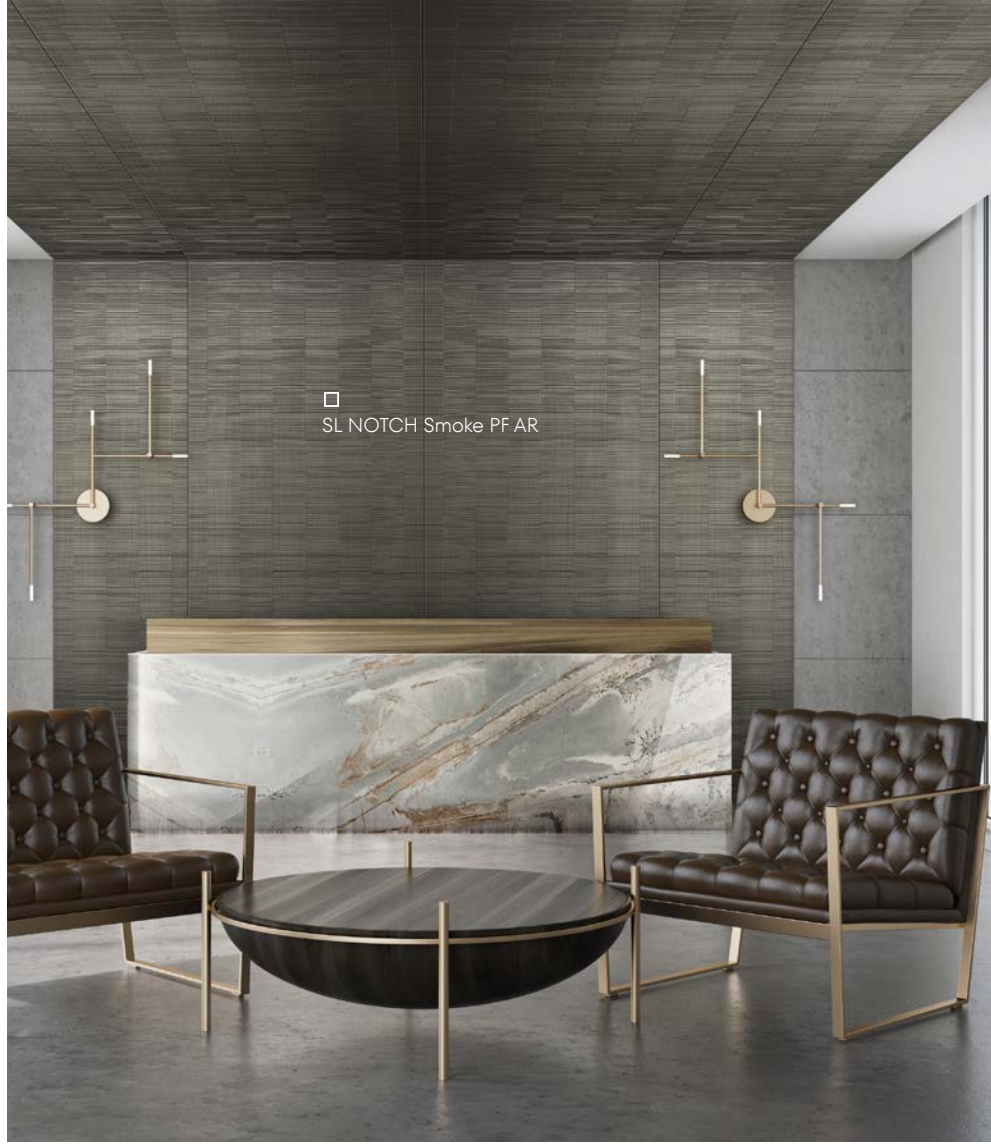
* own printing test required, samples are gladly provided.

EXTRA EQUIPMENT | ACCESSORIES

	NA	SA
PVA pre-treatment	✓	—
Special sizes	—	
Further thicknesses	—	

	NA	SA
Magnetic from 3 sheets	✓	
Cuttings	✓	
Flammability ASTM E84	✓	
Flammability EN13501-1	✓	

SL NOTCH Smoke PF AR
2600 x 1000 | NA 24931 | SA 24960



STRUCTURE-LINE abrasion-resistant

SL NOTCH Smoke PF AR

2600 x 1000



PRODUCT CHARACTERISTICS

	NA	SA
Surface material*	Print	
Base material	HIPS	
Material thickness mm	0,8	0,93
Max. relief height mm	1,2	1,33
Temperature resistance	until 50 °C	
Wet room suitability	■■■■□□	
Abrasion resistance	■■■■■□□	
Rolled packable Carton 480 x 480 mm, lay rolled goods flat upon receipt	✓ decor side outside, max. 6 pcs/carton	✓ decor side inside, max. 6 pcs/carton
Smallest bending radius mm	150	
Weight/panel kg	~ 2,1	~ 2,7

* The product is delivered without a protective film.

EXTRA EQUIPMENT | ACCESSORIES

	NA	SA
PVA pre-treatment	✓	—
Special sizes	—	
Further thicknesses	—	

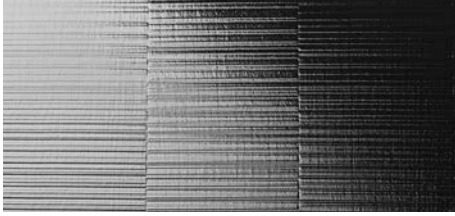
PROCESSING

	NA	SA
Cutting, punching	✓	✓
Drilling	✓	✓
Sawing	✓	—
Milling	✓	—
Laser cutting	✓	✓
Hot bending	✓	—
PVA pressing	✓	—
Digital printing Silver	✓*	
Screen printing	—	

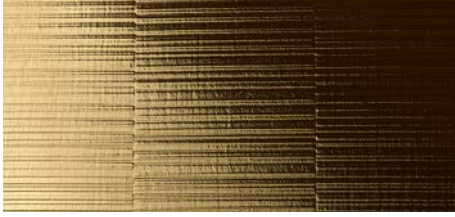
* own printing test required, samples are gladly provided.

	NA	SA
Magnetic from 3 sheets	✓	
Cuttings	✓	
Flammability ASTM E84	✓	
Flammability EN13501-1	✓	





SL NOTCH Silver matt
2600 x 1000 | NA 24947 | SA 24961



SL NOTCH Gold matt
2600 x 1000 | NA 24948 | SA 24962



Photo: HKW, Alexander Knebel

STRUCTURE-LINE

SL NOTCH matt

2600 x 1000



PRODUCT CHARACTERISTICS

	NA	SA
Surface material	PET	
Base material	HIPS	
Material thickness mm	0,8	0,93
Max. relief height mm	1,2	1,33
Temperature resistance	until 50 °C	
Wet room suitability	■■■■□□	
Abrasion resistance	■■■■□□□□	
Rolled packable Carton 480 x 480 mm, lay rolled goods flat upon receipt	✓ decor side outside, max. 6 pcs/carton	✓ decor side inside, max. 6 pcs/carton
Smallest bending radius mm	150	
Weight/panel kg	~ 2,2	~ 2,8

PROCESSING

	NA	SA
Cutting, punching	✓	✓
Drilling	✓	✓
Sawing	✓	—
Milling	✓	—
Laser cutting	✓	✓
Hot bending	✓	—
PVA pressing	✓	—
Digital printing Gold	On request	
Digital printing Silver	✓*	
Screen printing	—	

* own printing test required, samples are gladly provided.

EXTRA EQUIPMENT | ACCESSORIES

	NA	SA
PVA pre-treatment	✓	—
Special sizes	—	
Further thicknesses	—	

	NA	SA
Magnetic from 3 sheets	✓	
Cuttings	✓	
Flammability ASTM E84	✓	
Flammability EN13501-1	✓	





SL OCEAN Anthracite AR
2600 x 1000 | NA 25670 | SA 27049



SL OCEAN Iceblue AR
2600 x 1000 | NA 27061 | SA 27047

NEW



□ SL OCEAN Anthracite AR

Photo: Ferienwelt Kesselgrub

Due to the pattern, mechanical assembly (screws, spacers) is generally recommended. Applications in the ceiling area must be attached mechanically.

STRUCTURE-LINE

SL OCEAN

PRODUCT CHARACTERISTICS

	NA	SA
Surface material	PET	
Base material	HIPS	
Material thickness mm	2,0	2,24
Max. relief height mm	8,0	8,24
Temperature resistance	until 50 °C	
Wet room suitability	■■■■□	
Abrasion resistance	■■■■■■□	
Rolled packable Carton 480 x 480 mm, lay rolled goods flat upon receipt	✓ decor side outside, max. 2 pcs/carton	—
Smallest bending radius mm	1000	
Weight/panel kg	~ 5,6	~ 6,2

PROCESSING

	NA	SA
Cutting	✓	
Punching	On request	
Drilling	✓	
Sawing, milling	✓	—
Laser cutting	✓	
Hot bending	On request	—
PVA pressing	—	
Digital printing	✓*	
Screen printing	—	

* own printing test required, samples are gladly provided.

EXTRA EQUIPMENT | ACCESSORIES

	NA	SA
Glue recommendation	Cartridge adhesive and putty adhesive	—
PVA pre-treatment	—	
Further thicknesses	On request	
Magnetic from 3 sheets	—	

	NA	SA
Cuttings	✓	
Flammability ASTM E84	On request	
Flammability EN13501-1	On request	

* In general, SIBU DESIGN also recommends mechanical attachment.



SL OCEAN Silver

2600 x 1000 | NA 25570 | SA 27027



SL OCEAN Gold

2600 x 1000 | NA 27111 | SA 27823

NEW



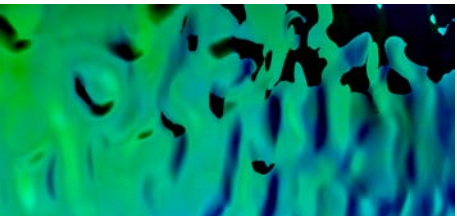
SL OCEAN Hollywood

2600 x 1000 | NA 25671 | SA 27048



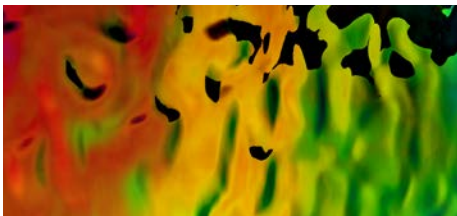
SL OCEAN Hollywood Blue

2600 x 1000 | NA 27565 | SA 27822



SL OCEAN Aqua

2600 x 1000 | NA 25669 | SA 27207



SL OCEAN Rainbow

2600 x 1000 | NA 27679 | SA 27743



raulpalmaphoto

Due to the pattern, mechanical assembly (screws, spacers) is generally recommended. Applications in the ceiling area must be attached mechanically.

STRUCTURE-LINE

SL OCEAN

PRODUCT CHARACTERISTICS

	NA	SA
Surface material	PET	
Base material	HIPS	
Material thickness mm	2,0	2,24
Max. relief height mm	8,0	8,24
Temperature resistance	until 50 °C	
Wet room suitability	■■■■□	
Abrasion resistance	■■□□□□	
Rolled packable Carton 480 x 480 mm, lay rolled goods flat upon receipt	✓ decor side outside, max. 2 pcs/carton	—
Smallest bending radius mm	1000	
Weight/panel kg	~ 5,6	~ 6,2

PROCESSING

	NA	SA
Cutting	✓	
Punching	On request	
Drilling	✓	
Sawing, milling	✓	—
Laser cutting	✓	
Hot bending	On request	—
PVA pressing	—	
Digital printing	✓*	
Screen printing	—	

* own printing test required, samples are gladly provided.

EXTRA EQUIPMENT | ACCESSORIES

	NA	SA
Glue recommendation	Cartridge adhesive and putty adhesive	—
PVA pre-treatment	—	
Further thicknesses	On request	
Magnetic from 3 sheets	—	

	NA	SA
Cuttings	✓	
Flammability ASTM E84	On request	
Flammability EN13501-1	On request	

* In general, SIBU DESIGN also recommends mechanical attachment.

DOWNLOAD >>>
Processing information



DECO LINE

Decoration



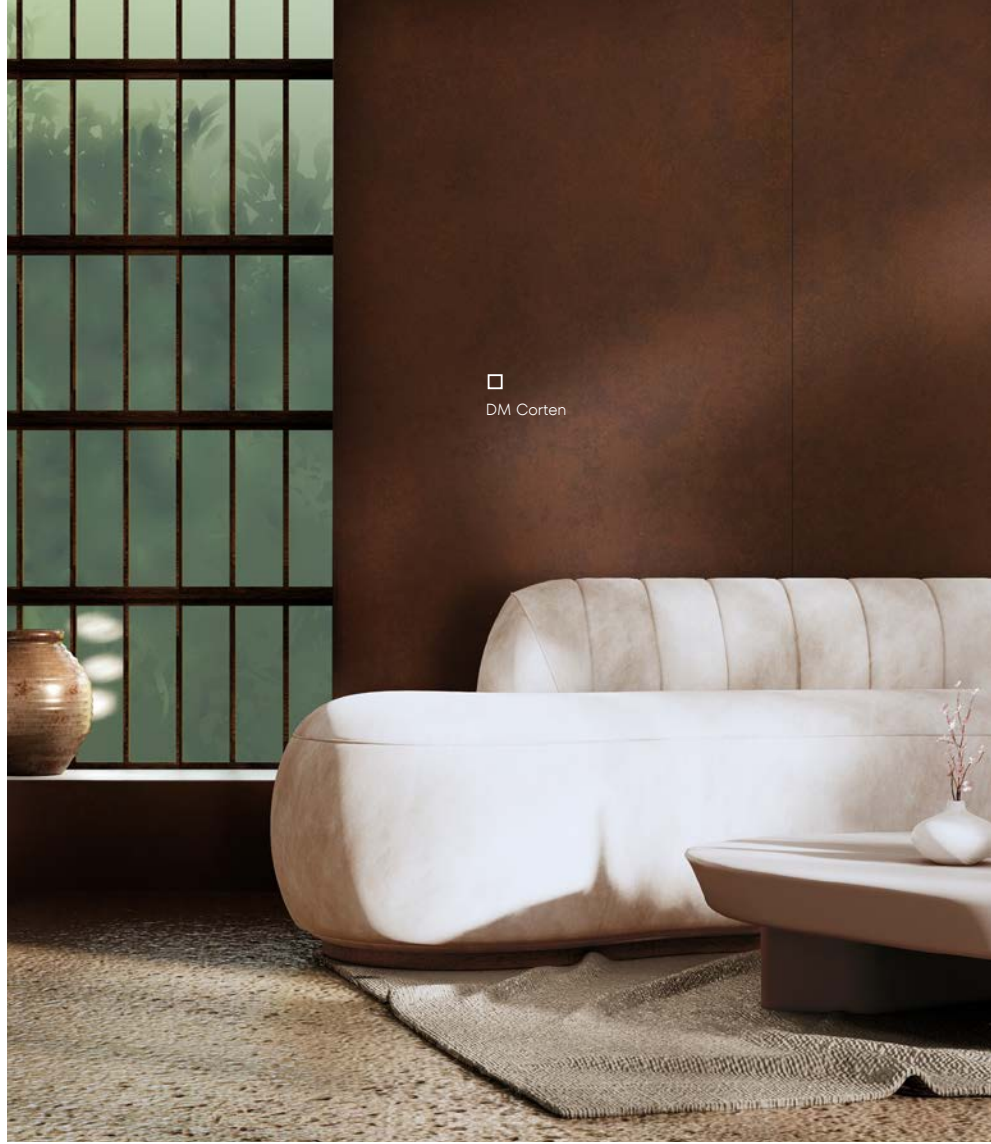
The DECO-LINE DECORATION product programme includes a number of varied decorative surfaces: metallic, brushed and vintage, as well as cement, wood and stone looks. Ultra-modern designs as well as evergreens in a wide range of colours.



NEW

DM Corten

2600 x 1000 | NA 25274 | SA 25276



□
DM Corten

2600 x 1000



DECO-LINE

DM Corten

PRODUCT CHARACTERISTICS

	NA	SA
Surface material*	impregnated paper	
Base material	HIPS	
Material thickness mm	1,1	1,23
Temperature resistance	until 50 °C	
Wet room suitability	■■■□	
Abrasion resistance	■■■□□□	
Rolled packable Carton 480 x 480 mm, lay rolled goods flat upon receipt	✓ decor side inside, max. 3 pcs/carton	✓ decor side inside, max. 3 pcs/carton
Smallest bending radius mm	150	
Weight/panel kg	~ 2,7	~ 3,3

* The product is delivered without a protective film.

PROCESSING

	NA	SA
Cutting, punching	✓	✓
Drilling	✓	✓
Sawing, milling	✓	—
Laser cutting	✓	✓
Hot bending	✓	—
Thermoforming	—	—
PVA pressing	✓	—
Digital printing	—	
Screen printing	On request	

EXTRA EQUIPMENT | ACCESSORIES

	NA	SA
PVA pre-treatment	✓	—
Special sizes	On request	
Further thicknesses	✓	

	NA	SA
Magnetic from 3 sheets	✓	
Cuttings	✓	
Flammability ASTM E84	—	
Flammability EN13501-1	—	





NEW

DM LIMESTONE Grey

2600 x 1000 | NA 26324 | SA 28808



□ DM LIMESTONE Grey

2600 x 1000



DECO-LINE

DM LIMESTONE Grey

PRODUCT CHARACTERISTICS

	NA	SA
Surface material*	impregnated paper	
Base material	HIPS	
Material thickness mm	1,1	1,23
Temperature resistance	until 50 °C	
Wet room suitability	■■■■□	
Abrasion resistance	■■■■□□	
Rolled packable Carton 480 x 480 mm, lay rolled goods flat upon receipt	✓ decor side inside, max. 3 pcs/carton	✓ decor side inside, max. 3 pcs/carton
Smallest bending radius mm	150	
Weight/panel kg	~ 2,6	~ 3,2

* The product is delivered without a protective film.

PROCESSING

	NA	SA
Cutting, punching	✓	✓
Drilling	✓	✓
Sawing, milling	✓	—
Laser cutting	✓	✓
Hot bending	✓	—
Thermoforming	—	—
PVA pressing	✓	—
Digital printing	On request	
Screen printing	On request	

EXTRA EQUIPMENT | ACCESSORIES

	NA	SA
PVA pre-treatment	✓	—
Special sizes	On request	
Further thicknesses	✓	

	NA	SA
Magnetic from 3 sheets	✓	
Cuttings	✓	
Flammability ASTM E84	—	
Flammability EN13501-1	—	



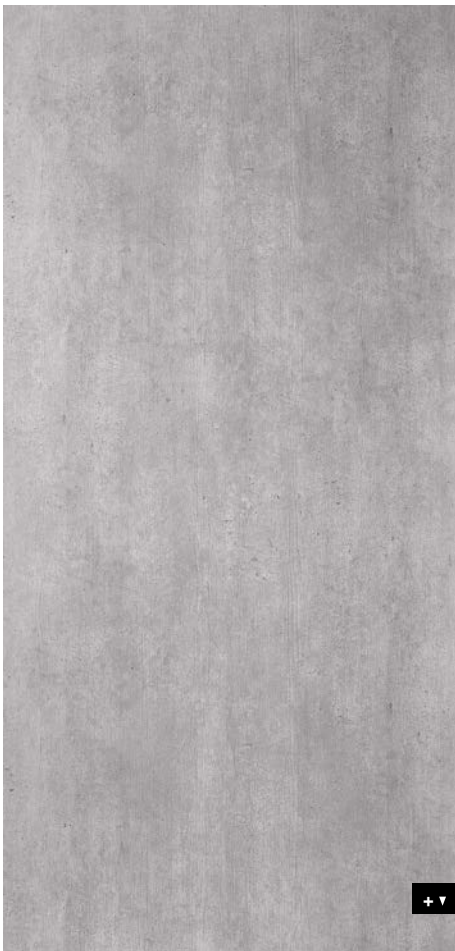
DM CEMENT Light

2600 x 1000 | NA 19087 | SA 19091



□ DM CEMENT Light

2600 x 1000



DECO-LINE

DM CEMENT Light

PRODUCT CHARACTERISTICS

	NA	SA
Surface material*	impregnated paper	
Base material	HIPS	
Material thickness mm	1,1	1,23
Temperature resistance	until 50 °C	
Wet room suitability	■■■■□□	
Abrasion resistance	■■■■□□□□	
Rolled packable Carton 480 x 480 mm, lay rolled goods flat upon receipt	✓ decor side inside, max. 3 pcs/carton	✓ decor side inside, max. 3 pcs/carton
Smallest bending radius mm	150	
Weight/panel kg	~ 3,3	~ 3,9

* The product is delivered without a protective film.

PROCESSING

	NA	SA
Cutting, punching	✓	✓
Drilling	✓	✓
Sawing, milling	✓	—
Laser cutting	✓	✓
Hot bending	✓	—
Thermoforming	—	—
PVA pressing	✓	—
Digital printing	On request	
Screen printing	On request	

EXTRA EQUIPMENT | ACCESSORIES

	NA	SA
PVA pre-treatment	✓	—
Special sizes	On request	
Further thicknesses	✓	

	NA	SA
Magnetic from 3 sheets	✓	
Cuttings	✓	
Flammability ASTM E84	—	
Flammability EN13501-1	—	





DM MARBLE White

2600 x 1000 | NA 19327 | SA 19338



□ DM MARBLE White

2600 x 1000



DECO-LINE

DM MARBLE White

PRODUCT CHARACTERISTICS

	NA	SA
Surface material*	impregnated paper	
Base material	HIPS	
Material thickness mm	1,1	1,23
Temperature resistance	until 50 °C	
Wet room suitability	■■■■□	
Abrasion resistance	■■■■□□	
Rolled packable Carton 480 x 480 mm, lay rolled goods flat upon receipt	✓ decor side inside, max. 3 pcs/carton	✓ decor side inside, max. 3 pcs/carton
Smallest bending radius	150 mm	
Weight/panel kg	~ 3,3	~ 3,9

* The product is delivered without a protective film.

PROCESSING

	NA	SA
Cutting, punching	✓	✓
Drilling	✓	✓
Sawing, milling	✓	—
Laser cutting	✓	✓
Hot bending	✓	—
Thermoforming	—	—
PVA pressing	✓	—
Digital printing	On request	
Screen printing	✓*	

* own printing test required, samples are gladly provided.

EXTRA EQUIPMENT | ACCESSORIES

	NA	SA
PVA pre-treatment	✓	—
Special sizes	On request	
Further thicknesses	✓	

	NA	SA
Magnetic from 3 sheets	✓	
Cuttings	✓	
Flammability ASTM E84	—	
Flammability EN13501-1	—	



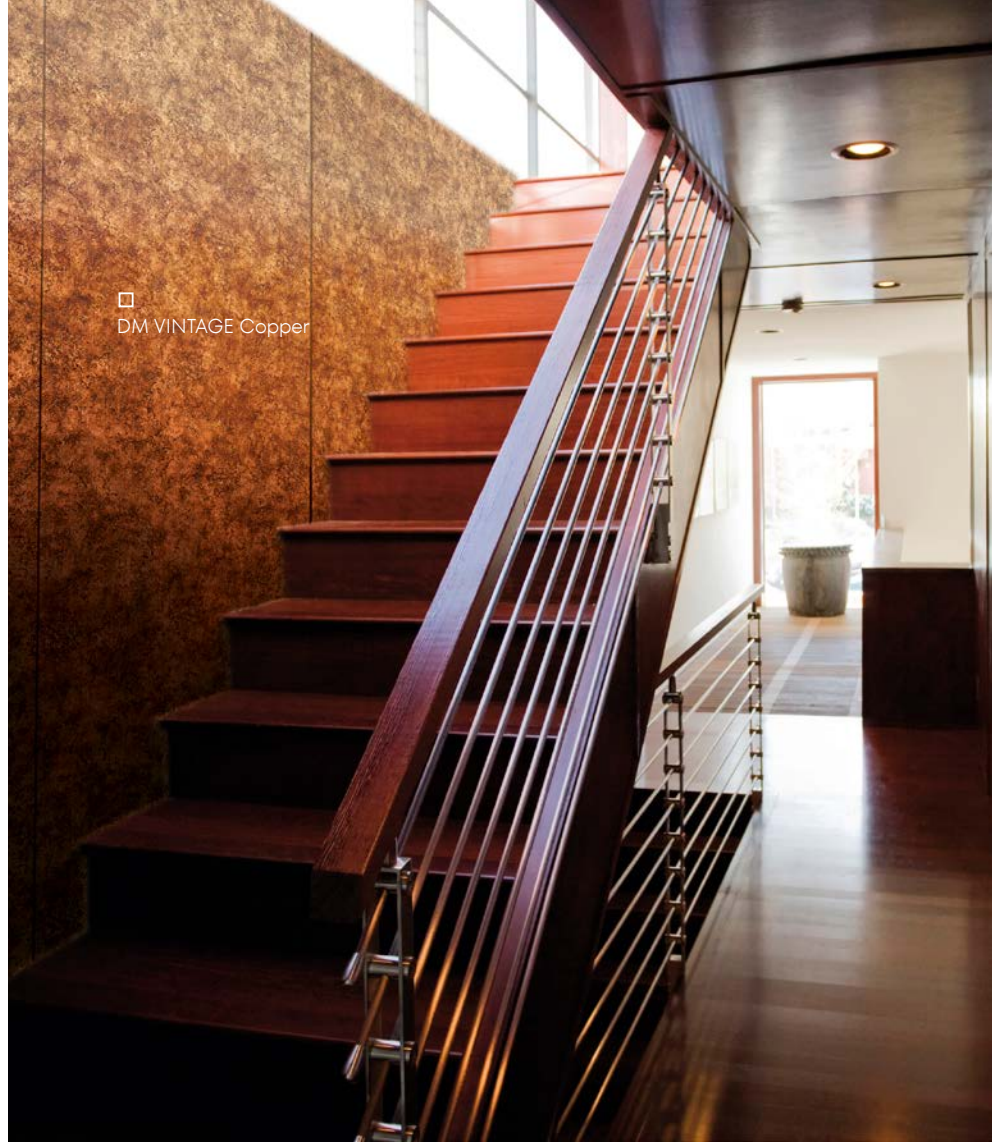
DM VINTAGE Copper

2600 x 1000 | **NA** 17276 | **SA** 17277



DM VINTAGE Silver

2600 x 1000 | **NA** 17274 | **SA** 17275



2600 x 1000



DECO-LINE

DM Vintage

PRODUCT CHARACTERISTICS

	NA	SA
Surface material	Print	
Base material	HIPS	
Material thickness mm	1,0	1,13
Temperature resistance	until 50 °C	
Wet room suitability	■■■■□	
Abrasion resistance	■■■■□□	
Rolled packable Carton 480 x 480 mm, lay rolled goods flat upon receipt	✓ decor side outside, max. 6 pcs/carton	✓ decor side inside, max. 6 pcs/carton
Smallest bending radius mm	150	
Weight/panel kg	~ 2,7	~ 3,3

PROCESSING

	NA	SA
Cutting, punching	✓	✓
Drilling	✓	✓
Sawing, milling	✓	—
Laser cutting	✓	✓
Hot bending	✓	—
Thermoforming	✓	—
PVA pressing	✓	—
Digital printing	✓*	
Screen printing	✓*	

* own printing test required, samples are gladly provided.

EXTRA EQUIPMENT | ACCESSORIES

	NA	SA
PVA pre-treatment	✓	—
Special sizes	On request	
Further thicknesses	✓	

	NA	SA
Magnetic from 3 sheets	✓	
Cuttings	✓	
Flammability ASTM E84	✓	
Flammability EN13501-1	✓	





NEW

DM METALLIC USED Sand
2600 x 1000 | NA 25349 | SA 25351



2600 x 1000



DECO-LINE

DM METALLIC USED

PRODUCT CHARACTERISTICS

	NA	SA
Surface material	Print	
Base material	HIPS	
Material thickness mm	1,0	1,13
Temperature resistance	until 50 °C	
Wet room suitability	■■■■□	
Abrasion resistance	■■■■□□□	
Rolled packable Carton 480 x 480 mm, lay rolled goods flat upon receipt	✓ decor side outside, max. 6 pcs/carton	✓ decor side inside, max. 6 pcs/carton
Smallest bending radius mm	150	
Weight/panel kg	~ 2,5	~ 3,1

PROCESSING

	NA	SA
Cutting, punching	✓	✓
Drilling	✓	✓
Sawing, milling	✓	—
Laser cutting	✓	✓
Hot bending	✓	—
Thermoforming	✓	✓
PVA pressing	✓	—
Digital printing	✓*	
Screen printing	✓*	

* own printing test required, samples are gladly provided.

EXTRA EQUIPMENT | ACCESSORIES

	NA	SA
PVA pre-treatment	✓	—
Special sizes	On request	
Further thicknesses	✓	

	NA	SA
Magnetic from 3 sheets	✓	
Cuttings	✓	
Flammability ASTM E84	✓	
Flammability EN13501-1	✓	





DM LUXURY Bronze

2600 x 1000 | **NA** 17825 | **SA** 17846



DM LUXURY Gold

2600 x 1000 | **NA** 21391 | **SA** 21392



□ DM LUXURY Bronze

2600 x 1000



DECO-LINE

DM LUXURY

PRODUCT CHARACTERISTICS

	NA	SA
Surface material	Print	
Base material	HIPS	
Material thickness mm	1,0	1,13
Temperature resistance	until 50 °C	
Wet room suitability	■ ■ ■ □ □	
Abrasion resistance	■ ■ ■ □ □ □ □	
Rolled packable Carton 480 x 480 mm, lay rolled goods flat upon receipt	✓ decor side outside, max. 6 pcs/carton	✓ decor side inside, max. 6 pcs/carton
Smallest bending radius mm	150	
Weight/panel kg	~ 2,7	~ 3,3

PROCESSING

	NA	SA
Cutting, punching	✓	✓
Drilling	✓	✓
Sawing, milling	✓	—
Laser cutting	✓	✓
Hot bending Gold	—	—
Hot bending Bronze	✓	—
Thermoforming Gold	—	—
Thermoforming Bronze	✓	—
PVA pressing	✓	—
Digital printing	✓*	
Screen printing	✓*	

* own printing test required, samples are gladly provided.

EXTRA EQUIPMENT | ACCESSORIES

	NA	SA
PVA pre-treatment	✓	—
Special sizes	On request	
Further thicknesses	✓	

	NA	SA
Magnetic from 3 sheets	✓	
Cuttings	✓	
Flammability ASTM E84	✓	
Flammability EN13501-1	✓	





DM CLASSY Black AR
2600 x 1000 | NA 19325 | SA 19336



DM CLASSY Gold
2600 x 1000 | NA 24555 | SA 24557



□
DM CLASSY Gold

2600 x 1000



DECO-LINE

DM CLASSY

PRODUCT CHARACTERISTICS

	NA	SA
Surface material	Print	
Base material	HIPS	
Material thickness mm	1,0	1,13
Temperature resistance	until 50 °C	
Wet room suitability	■■■■□□	
Abrasion resistance Black	■■■■■□□	
Abrasion resistance Gold	■■■■□□□□	
Rolled packable Carton 480 x 480 mm, lay rolled goods flat upon receipt	✓ decor side outside, max. 6 pcs/carton	✓ decor side inside, max. 6 pcs/carton
Smallest bending radius mm	150	
Weight/panel kg	~ 2,7	~ 3,3

PROCESSING

	NA	SA
Cutting, punching	✓	✓
Drilling	✓	✓
Sawing, milling	✓	—
Laser cutting	✓	✓
Hot bending Black	—	—
Hot bending Gold	✓	—
Thermoforming Black	—	—
Thermoforming Gold	✓	—
PVA pressing	✓	—
Digital printing	✓*	
Screen printing	✓*	

* own printing test required, samples are gladly provided.

EXTRA EQUIPMENT | ACCESSORIES

	NA	SA
PVA pre-treatment	✓	—
Special sizes	On request	
Further thicknesses	✓	

	NA	SA
Magnetic from 3 sheets	✓	
Cuttings	✓	
Flammability ASTM E84	✓	
Flammability EN13501-1	✓	



DM OXIDIZED Copper
2600 x 1000 | NA 26522 | SA 26523



DECO-LINE

DM OXIDIZED

2600 x 1000



PRODUCT CHARACTERISTICS

	NA	SA
Surface material	Print	
Base material	HIPS	
Material thickness mm	1,0	1,13
Temperature resistance	until 50 °C	
Wet room suitability	■■■□□	
Abrasion resistance	■■■□□□□	
Rolled packable Carton 480 x 480 mm, lay rolled goods flat upon receipt	✓ decor side outside, max. 6 pcs/carton	✓ decor side inside, max. 6 pcs/carton
Smallest bending radius mm	150	
Weight/panel kg	~ 2,7	~ 3,3

PROCESSING

	NA	SA
Cutting, punching	✓	✓
Drilling	✓	✓
Sawing, milling	✓	—
Laser cutting	✓	✓
Hot bending	✓	—
Thermoforming	✓	—
PVA pressing	✓	—
Digital printing	✓*	
Screen printing	✓*	

* own printing test required, samples are gladly provided.

EXTRA EQUIPMENT | ACCESSORIES

	NA	SA
PVA pre-treatment	✓	—
Special sizes	On request	
Further thicknesses	✓	

	NA	SA
Magnetic from 3 sheets	✓	
Cuttings	✓	
Flammability ASTM E84	✓	
Flammability EN13501-1	✓	



DM Smoke PF AR

2600 x 1000 | **NA** 10385 | **SA** 10389



DECO-LINE abrasion-resistant

DM PF AR

PRODUCT CHARACTERISTICS

	NA	SA
Surface material	Print	
Base material	HIPS	
Material thickness mm	1,0	1,13
Temperature resistance	until 50 °C	
Wet room suitability	■■■■■□	
Abrasion resistance	■■■■■□□	
Rolled packable Carton 480 x 480 mm, lay rolled goods flat upon receipt	✓ decor side outside, max. 6 pcs/carton	✓ decor side inside, max. 6 pcs/carton
Smallest bending radius mm	150	
Weight/panel kg	~ 2,7	~ 3,3

PROCESSING

	NA	SA
Cutting, punching	✓	✓
Drilling	✓	✓
Sawing, milling	✓	—
Laser cutting	✓	✓
Hot bending	✓	—
Thermoforming	✓	—
PVA pressing	✓	—
Digital printing	✓*	
Screen printing	✓*	

* own printing test required, samples are gladly provided.

EXTRA EQUIPMENT | ACCESSORIES

	NA	SA
PVA pre-treatment	✓	—
Special sizes	On request	
Further thicknesses	✓	

	NA	SA
Magnetic from 3 sheets	✓	
Cuttings	✓	
Flammability ASTM E84	✓	
Flammability EN13501-1	✓	



DM MONSOON VINTAGE Brown
2600 x 1000 | NA 17033 | SA 17037



□
DM MONSOON
VINTAGE Brown

2600 x 1000



DECO-LINE

DM MONSOON

PRODUCT CHARACTERISTICS

	NA	SA
Surface material*	Print	
Base material	HIPS	
Material thickness mm	1,0	1,13
Temperature resistance	until 50 °C	
Wet room suitability	■■■■□	
Abrasion resistance	■■■■□□□	
Rolled packable Carton 480 x 480 mm, lay rolled goods flat upon receipt	✓ decor side outside, max. 6 pcs/carton	✓ decor side inside, max. 6 pcs/carton
Smallest bending radius mm	150	
Weight/panel kg	~ 2,6	~ 3,2

* The product is delivered without a protective film.

PROCESSING

	NA	SA
Cutting, punching	✓	✓
Drilling	✓	✓
Sawing, milling	✓	—
Laser cutting	✓	✓
Hot bending	✓	—
Thermoforming	—	—
PVA pressing	✓	—
Digital printing	On request	
Screen printing	✓*	

* own printing test required, samples are gladly provided.

EXTRA EQUIPMENT | ACCESSORIES

	NA	SA
PVA pre-treatment	✓	—
Special sizes	On request	
Further thicknesses	—	

	NA	SA
Magnetic from 3 sheets	✓	
Cuttings	✓	
Flammability ASTM E84	—	
Flammability EN13501-1	—	





DM CONCRETE Grey AR
2600 x 1000 | NA 22827 | SA 22828



□ DM CONCRETE Grey AR

DECO-LINE abrasion-resistant

2600 x 1000



DM CONCRET Grey AR

PRODUCT CHARACTERISTICS

	NA	SA
Surface material*	PP	
Base material	HIPS	
Material thickness mm	1,1	1,23
Temperature resistance	until 50 °C	
Wet room suitability	■■■■□	
Abrasion resistance	■■■■■□	
Rolled packable Carton 480 x 480 mm, lay rolled goods flat upon receipt	✓ decor side inside, max. 3 pcs/carton	✓ decor side inside, max. 3 pcs/carton
Smallest bending radius mm	150	
Weight/panel kg	~ 3	~ 3,6

* The product is delivered without a protective film.

PROCESSING

	NA	SA
Cutting, punching	✓	✓
Drilling	✓	✓
Sawing, milling	✓	—
Laser cutting	✓	✓
Hot bending	✓	—
Thermoforming	—	—
PVA pressing	✓	—
Digital printing	✓*	
Screen printing	✓*	

* own printing test required, samples are gladly provided.

EXTRA EQUIPMENT | ACCESSORIES

	NA	SA
PVA pre-treatment	✓	—
Special sizes	On request	
Further thicknesses	✓	

	NA	SA
Magnetic from 3 sheets	✓	
Cuttings	✓	
Flammability ASTM E84	—	
Flammability EN13501-1	—	





WL Carbonized Wood

2600 x 1000 | NA 25152 | SA 25154



Photo: raumArt Ender

2600 x 1000



DECO-LINE

WL Carbonized Wood

PRODUCT CHARACTERISTICS

	NA	SA
Surface material*	impregnated paper	
Base material	HIPS	
Material thickness mm	1,1	1,23
Temperature resistance	until 50 °C	
Wet room suitability	■■■□□	
Abrasion resistance	■■■□□□□	
Rolled packable Carton 480 x 480 mm, lay rolled goods flat upon receipt	✓ decor side inside, max. 3 pcs/carton	✓ decor side inside, max. 3 pcs/carton
Smallest bending radius mm	150	
Weight/panel kg	~ 2,8	~ 3,4

* The product is delivered without a protective film.

PROCESSING

	NA	SA
Cutting, punching	✓	✓
Drilling	✓	✓
Sawing, milling	✓	—
Laser cutting	✓	✓
Hot bending	✓	—
Thermoforming	—	—
PVA pressing	✓	—
Digital printing	—	
Screen printing	On request	

EXTRA EQUIPMENT | ACCESSORIES

	NA	SA
PVA pre-treatment	✓	—
Special sizes	On request	
Further thicknesses	✓	

	NA	SA
Magnetic from 3 sheets	✓	
Cuttings	✓	
Flammability ASTM E84	—	
Flammability EN13501-1	—	





WL Nutwood

2600 x 1000 x 1 | **NA** 25155 | **SA** 25159

2600 x 1000 x 1,2 | **NA** 19019 | **SA** 19030 - Discontinued item



2600 x 1000



DECO-LINE

WL Nutwood

PRODUCT CHARACTERISTICS

	NA	SA
Surface material*	impregnated paper	
Base material	HIPS	
Material thickness mm	1,0	1,13
Temperature resistance	until 50 °C	
Wet room suitability	■■■■□	
Abrasion resistance	■■■■□□□	
Rolled packable Carton 480 x 480 mm, lay rolled goods flat upon receipt	✓ decor side inside, max. 3 pcs/carton	✓ decor side inside, max. 3 pcs/carton
Smallest bending radius mm	150	
Weight/panel kg	~ 3,4	~ 4

* The product is delivered without a protective film.

PROCESSING

	NA	SA
Cutting, punching	✓	✓
Drilling	✓	✓
Sawing, milling	✓	—
Laser cutting	✓	✓
Hot bending	✓	—
Thermoforming	—	—
PVA pressing	✓	—
Digital printing	—	
Screen printing	On request	

EXTRA EQUIPMENT | ACCESSORIES

	NA	SA
PVA pre-treatment	✓	—
Special sizes	On request	
Further thicknesses	✓	

	NA	SA
Magnetic from 3 sheets	✓	
Cuttings	✓	
Flammability ASTM E84	—	
Flammability EN13501-1	—	





WL OAK TREE Light

2600 x 1000 | NA 17278 | SA 17279



2600 x 1000



DECO-LINE

WL OAK TREE Light

PRODUCT CHARACTERISTICS

	NA	SA
Surface material*	impregnated paper	
Base material	HIPS	
Material thickness mm	1,1	1,23
Temperature resistance	until 50 °C	
Wet room suitability	■■■■□	
Abrasion resistance	■■■■□□□	
Rolled packable Carton 480 x 480 mm, lay rolled goods flat upon receipt	✓ decor side inside, max. 3 pcs/carton	✓ decor side inside, max. 3 pcs/carton
Smallest bending radius mm	150	
Weight/panel kg	~ 3,2	~ 3,8

* The product is delivered without a protective film.

PROCESSING

	NA	SA
Cutting, punching	✓	✓
Drilling	✓	✓
Sawing, milling	✓	—
Laser cutting	✓	✓
Hot bending	✓	—
Thermoforming	—	—
PVA pressing	✓	—
Digital printing	On request	
Screen printing	On request	

EXTRA EQUIPMENT | ACCESSORIES

	NA	SA
PVA pre-treatment	✓	—
Special sizes	On request	
Further thicknesses	✓	

	NA	SA
Magnetic from 3 sheets	✓	
Cuttings	✓	
Flammability ASTM E84	—	
Flammability EN13501-1	—	





DECO LINE

DECO LINE

DECO LINE

DECO LINE

DECO LINE

DECO LINE

Display

The DECO-LINE DISPLAY product programme includes polychrome surfaces, brilliant mirrors and brushed designs in a wide range of colours. Particularly suitable for display and shop windows.



DM OPTICAL MIRROR Fashion Grey AR
2800 x 1250 | NA 21244



DM OPTICAL MIRROR Anthracite AR
2800 x 1250 | NA 21241



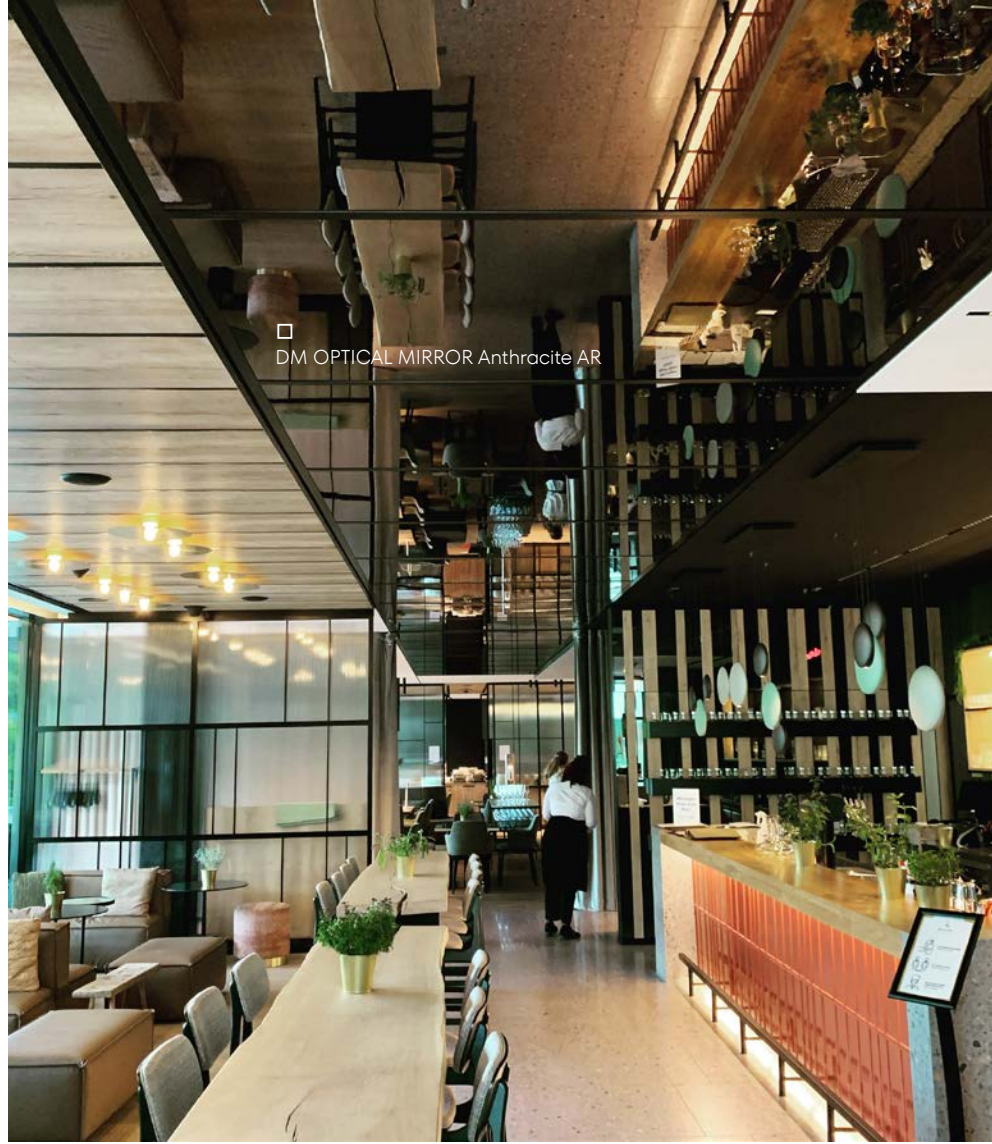
DM OPTICAL MIRROR Gold AR
2800 x 1250 | NA 21243



DM OPTICAL MIRROR Brass AR
2800 x 1250 | NA 21242



DM OPTICAL MIRROR Silver AR
2800 x 1250 | NA 20877



DECO-LINE abrasion-resistant

DM OPTICAL MIRROR AR

PRODUCT CHARACTERISTICS

	NA
Surface material	PET
Base material	HIPS
Material thickness mm	1,0
Temperature resistance	until 50 °C
Wet room suitability	■■■□
Abrasion resistance	■■■■■□
Rolled packable Carton 480 x 480 mm, lay rolled goods flat upon receipt	✓ decor side outside, max. 4 pcs/carton
Smallest bending radius mm	150
Weight/panel kg	~ 3,65

PROCESSING

	NA
Cutting, punching	✓
Drilling	✓
Sawing, milling	✓
Laser cutting	✓
Hot bending	✓
Thermoforming	—
PVA pressing	✓
Digital printing	—
Screen printing	—

EXTRA EQUIPMENT | ACCESSORIES

	NA
PVA pre-treatment	✓
Special sizes	On request
Further thicknesses	✓

	NA
Magnetic from 3 sheets	—
Cuttings	✓
Flammability ASTM E84	—
Flammability EN13501-1	—

**DM Brown AR**

2600 x 1000 | NA 10147 | SA 10150



NEW

DM Red Brown AR

2600 x 1000 | NA 28498 | SA 28499



NEW

DM Rosegold AR

2600 x 1000 | NA 20955 | SA 20956

**DM Gold AR**

2600 x 1000 | NA 10181 | SA 10187

2000 x 1000 | NA 10178 | SA 10186 (DISCONTINUED)

**DM Brass AR**

2600 x 1000 | NA 10135 | SA 10139



NEW

DM Gold 30 AR

2600 x 1000 | NA 25572 | SA 25573

**DM Fashion Gold AR**

2600 x 1000 | NA 25322 | SA 25323

□
DM Gold AR**DECO-LINE** abrasion-resistant

DM Mirror AR

PRODUCT CHARACTERISTICS

	NA	SA
Surface material	PET	
Base material	HIPS	
Material thickness mm	1,0	1,13
Temperature resistance	until 50 °C	
Wet room suitability	■■■□□	
Abrasion resistance	■■■■■■□	
Rolled packable Carton 480 x 480 mm, lay rolled goods flat upon receipt	✓ decor side outside, max. 6 pcs/carton	✓ decor side inside, max. 6 pcs/carton
Smallest bending radius	150 mm	
Weight/panel kg	~ 2,7	~ 3,3

PROCESSING

	NA	SA
Cutting, punching	✓	✓
Drilling	✓	✓
Sawing, milling	✓	—
Laser cutting	✓	✓
Hot bending	✓	—
Thermoforming	✓	—
PVA pressing	✓	—
Digital printing	✓*	
Screen printing	✓*	

* own printing test required, samples are gladly provided.

EXTRA EQUIPMENT | ACCESSORIES

	NA	SA
PVA pre-treatment	✓	—
Special sizes	On request	
Further thicknesses	✓	

	NA	SA
Magnetic from 3 sheets	✓	
Cuttings	✓	
Flammability ASTM E84	✓	
Flammability EN13501-1	✓	



DM Fashion Grey AR

2600 x 1000 | **NA** 13808 | **SA** 13810



DM Anthracite AR

2600 x 1000 | **NA** 10120 | **SA** 10125



DM Fashion Red AR

2600 x 1000 | **NA** 22387 | **SA** 23388



DM Iceblue AR

2600 x 1000 | **NA** 10204 | **SA** 10210



Photo: © Form Factory

DECO-LINE abrasion-resistant

DM Mirror AR

PRODUCT CHARACTERISTICS

	NA	SA
Surface material	PET	
Base material	HIPS	
Material thickness mm	1,0	1,13
Temperature resistance	until 50 °C	
Wet room suitability	■■■■□	
Abrasion resistance	■■■■■■□	
Rolled packable Carton 480 x 480 mm, lay rolled goods flat upon receipt	✓ decor side outside, max. 6 pcs/carton	✓ decor side inside, max. 6 pcs/carton
Smallest bending radius	150 mm	
Weight/panel kg	~ 2,7	~ 3,3

PROCESSING

	NA	SA
Cutting, punching	✓	✓
Drilling	✓	✓
Sawing, milling	✓	—
Laser cutting	✓	✓
Hot bending	✓	—
Thermoforming	✓	—
PVA pressing	✓	—
Digital printing	✓*	
Screen printing	✓*	

* own printing test required, samples are gladly provided.

EXTRA EQUIPMENT | ACCESSORIES

	NA	SA
PVA pre-treatment	✓	—
Special sizes	On request	
Further thicknesses	✓	

	NA	SA
Magnetic from 3 sheets	✓	
Cuttings	✓	
Flammability ASTM E84	✓	
Flammability EN13501-1	✓	



DM Gold

2600 x 1000 | NA 25077 | SA 25078



Photo: Beth Crockatt Photography

DECO-LINE

DM Mirror

PRODUCT CHARACTERISTICS

	NA	SA
Surface material	PET	
Base material	HIPS	
Material thickness mm	1,0	1,13
Temperature resistance	until 50 °C	
Wet room suitability	■■■□	
Abrasion resistance	■■□□□□	
Rolled packable Carton 480 x 480 mm, lay rolled goods flat upon receipt	✓ decor side outside, max. 6 pcs/carton	✓ decor side inside, max. 6 pcs/carton
Smallest bending radius	150 mm	
Weight/panel kg	~ 2,7	~ 3,3

PROCESSING

	NA	SA
Cutting, punching	✓	✓
Drilling	✓	✓
Sawing, milling	✓	—
Laser cutting	✓	✓
Hot bending	✓	—
Thermoforming	✓	—
PVA pressing	✓	—
Digital printing	On request	
Screen printing	✓*	

* own printing test required, samples are gladly provided.

EXTRA EQUIPMENT | ACCESSORIES

	NA	SA
PVA pre-treatment	✓	—
Special sizes	On request	
Further thicknesses	✓	

	NA	SA
Magnetic from 3 sheets	✓	
Cuttings	✓	
Flammability ASTM E84	✓	
Flammability EN13501-1	✓	

DM Silver

2600 x 1000 / 1 mm | **NA** 10312 | **SA** 10324
 2000 x 1000 / 1 mm | **NA** 10304 | **SA** 10322
 2000 x 1000 / 2 mm | **NA** 12114 | **SA** 10323 (DISCONTINUED)

DM Silver/White

2000 x 1000 / 1 mm | **NA** 10372 | **SA** 10381



DECO-LINE

DM Mirror

PRODUCT CHARACTERISTICS

	NA	SA
Surface material	PET	
Base material	HIPS	
Material thickness mm	1,0 / 2,0	1,13 / 2,13
Temperature resistance	until 50 °C	
Wet room suitability	■■■■□	
Abrasion resistance	■■□□□□	
Rolled packable Carton 480 x 480 mm, lay rolled goods flat upon receipt	✓ decor side outside, max. 6 pcs/carton	✓ decor side inside, max. 6 pcs/carton
Smallest bending radius	150 mm	
Weight/panel kg Silver (2600x1000x1)	~ 2,7	~ 3,3
Weight/panel kg Silver/White (2000x1000x1)	~ 2,1	~ 2,7

PROCESSING

	NA	SA
Cutting, punching	✓	✓
Drilling	✓	✓
Sawing, milling	✓	—
Laser cutting	✓	✓
Thermoforming	✓	—
Hot bending	✓	—
PVA pressing	✓	—
Digital printing	✓*	
Screen printing	✓*	

* own printing test required, samples are gladly provided.

EXTRA EQUIPMENT | ACCESSORIES

	NA	SA
PVA pre-treatment	✓	—
Special sizes	On request	
Further thicknesses	✓	

	NA	SA
Magnetic from 3 sheets	✓	
Cuttings	✓	
Flammability ASTM E84	✓	
Flammability EN13501-1	✓	



DM Aqua

2600 x 1000 | **NA** 18424 | **SA** 18443



DM Hollywood Blue

2600 x 1000 | **NA** 20945 | **SA** 21272



DM Hollywood

2600 x 1000 | **NA** 18433 | **SA** 18442



Photo Diana Iskander

DECO-LINE

DM Mirror

PRODUCT CHARACTERISTICS

	NA	SA
Surface material	PET	
Base material	HIPS	
Material thickness mm	1,0	1,13
Temperature resistance	until 50 °C	
Wet room suitability	■■■□	
Abrasion resistance	■■□□□□	
Rolled packable Carton 480 x 480 mm, lay rolled goods flat upon receipt	✓ decor side outside, max. 6 pcs/carton	✓ decor side inside, max. 6 pcs/carton
Smallest bending radius	150 mm	
Weight/panel kg	~ 2,7	~ 3,3

PROCESSING

	NA	SA
Cutting, punching	✓	✓
Drilling	✓	✓
Sawing, milling	✓	—
Laser cutting	✓	✓
Hot bending	✓	—
Thermoforming	✓	—
PVA pressing	✓	—
Digital printing	✓	
Screen printing	✓	

EXTRA EQUIPMENT | ACCESSORIES

	NA	SA
PVA pre-treatment	✓	—
Special sizes	On request	
Further thicknesses	✓	

	NA	SA
Magnetic from 3 sheets	✓	
Cuttings	✓	
Flammability ASTM E84	✓ DM Hollywood + Blue	
Flammability EN13501-1	✓ DM Hollywood + Blue	



DM Magic Black AR

2600 x 1000 | **NA** 15415 | **SA** 15423



DM Magic White AR

2600 x 1000 | **NA** 15414 | **SA** 15422



□ DM Magic White AR

Photo: SU VALGUS

DECO-LINE abrasion-resistant

DM Magic AR

PRODUCT CHARACTERISTICS

	NA	SA
Surface material	PET	
Base material	HIPS	
Material thickness mm	1,0	1,13
Temperature resistance	until 50 °C	
Wet room suitability	■■■■□	
Abrasion resistance	■■■■■□□	
Rolled packable Carton 480 x 480 mm, lay rolled goods flat upon receipt	✓ decor side outside, max. 6 pcs/carton	✓ decor side inside, max. 6 pcs/carton
Smallest bending radius mm	150	
Weight/panel kg	~ 2,7	~ 3,3

PROCESSING

	NA	SA
Cutting, punching	✓	✓
Drilling	✓	✓
Sawing, milling	✓	—
Laser cutting	✓	✓
Hot bending	✓	—
Thermoforming	✓	—
PVA pressing	✓	—
Digital printing	On request	
Screen printing	On request	

EXTRA EQUIPMENT | ACCESSORIES

	NA	SA
PVA pre-treatment	✓	—
Special sizes	On request	
Further thicknesses	✓	

	NA	SA
Magnetic from 3 sheets	✓	
Cuttings	✓	
Flammability ASTM E84	—	
Flammability EN13501-1	—	

DM Graphite Black matt

2600 x 1000 | NA 23144 | SA 23147



DM Graphite Black matt

DM Snow White matt

2600 x 1000 | NA 23145 | SA 23146



DECO-LINE

DM matt

PRODUCT CHARACTERISTICS

	NA	SA
Surface material	PET	
Base material	HIPS	
Material thickness mm	1,0	1,13
Temperature resistance	until 50 °C	
Wet room suitability	■■■□	
Abrasion resistance	■■■■□□	
Rolled packable Carton 480 x 480 mm, lay rolled goods flat upon receipt	✓ decor side outside, max. 6 pcs/carton	✓ decor side inside, max. 6 pcs/carton
Smallest bending radius mm	150	
Weight/panel kg	~ 2,7	~ 3,3

PROCESSING

	NA	SA
Cutting, punching	✓	✓
Drilling	✓	✓
Sawing, milling	✓	—
Laser cutting	✓	✓
Hot bending	✓	—
Thermoforming	✓	—
PVA pressing	✓	—
Digital printing	On request	
Screen printing	On request	

EXTRA EQUIPMENT | ACCESSORIES

	NA	SA
PVA pre-treatment	✓	—
Special sizes	On request	
Further thicknesses	✓	

	NA	SA
Magnetic from 3 sheets	✓	
Cuttings	✓	
Flammability ASTM E84	✓ Snow White	
Flammability EN13501-1	✓ Snow White	

DM Gold MMS

2600 x 1000 | **NA** 20500 | **SA** 20502



DM Silver MMS

2600 x 1000 | **NA** 20499 | **SA** 20501



DM MMS

PRODUCT CHARACTERISTICS

	NA	SA
Surface material	Print	
Base material	HIPS	
Material thickness mm	1,0	1,13
Temperature resistance	until 50 °C	
Wet room suitability	■ ■ ■ □ □	
Abrasion resistance	■ □ □ □ □ □ □	
Rolled packable Carton 480 x 480 mm, lay rolled goods flat upon receipt	✓ decor side outside, max. 6 pcs/carton	✓ decor side inside, max. 6 pcs/carton
Smallest bending radius	150 mm	
Weight/panel kg	~ 2,6	~ 3,2

PROCESSING

	NA	SA
Cutting, punching	✓	✓
Drilling	✓	✓
Sawing, milling	✓	—
Laser cutting	✓	✓
Hot bending	✓	—
Thermoforming	—	—
PVA pressing	✓	—
Digital printing	—	
Screen printing	✓*	

* own printing test required, samples are gladly provided.

EXTRA EQUIPMENT | ACCESSORIES

	NA	SA
PVA pre-treatment	✓	—
Special sizes	On request	
Further thicknesses	✓	

	NA	SA
Magnetic from 3 sheets	✓	
Cuttings	✓	
Flammability ASTM E84	—	
Flammability EN13501-1	—	



DM Brass brushed matt AR
2600 x 1000 | NA 15290 | SA 15298



DM Grey brushed matt AR
2600 x 1000 | NA 15289 | SA 15297



Photo: Carini GmbH

DECO-LINE abrasion-resistant

2600 x 1000



DM Brushed matt AR

PRODUCT CHARACTERISTICS

	NA	SA
Surface material	PET	
Base material	HIPS	
Material thickness mm	1,0	1,13
Temperature resistance	until 50 °C	
Wet room suitability	■■■■□	
Abrasion resistance	■■■■■■□	
Rolled packable Carton 480 x 480 mm, lay rolled goods flat upon receipt	✓ decor side outside, max. 6 pcs/carton	✓ decor side inside, max. 6 pcs/carton
Smallest bending radius	150 mm	
Weight/panel kg	~ 2,7	~ 3,3

PROCESSING

	NA	SA
Cutting, punching	✓	✓
Drilling	✓	✓
Sawing, milling	✓	—
Laser cutting	✓	✓
Hot bending	✓	—
Thermoforming	✓	—
PVA pressing	✓	—
Digital printing	—	
Screen printing	—	

EXTRA EQUIPMENT | ACCESSORIES

	NA	SA
PVA pre-treatment	✓	—
Special sizes	On request	
Further thicknesses	✓	

	NA	SA
Magnetic from 3 sheets	✓	
Cuttings	✓	
Flammability ASTM E84	✓	
Flammability EN13501-1	✓	





DM Copper brushed AR
2600 x 1000 / **NA** 12418 / **SA** 12432



DM Champagne brushed AR
2600 x 1000 | **NA** 12417 | **SA** 12433



DM Green Steel brushed AR
2600 x 1000 | **NA** 30467 | **SA** 30468



□
DM Green Steel
brushed AR

DECO-LINE abrasion-resistant

2600 x 1000



DM Brushed AR

PRODUCT CHARACTERISTICS

	NA	SA
Surface material	PET	
Base material	HIPS	
Material thickness mm	1,0	1,13
Temperature resistance	until 50 °C	
Wet room suitability	■■■■□	
Abrasion resistance	■■■■■■□	
Rolled packable Carton 480 x 480 mm, lay rolled goods flat upon receipt	✓ decor side outside, max. 6 pcs/carton	✓ decor side inside, max. 6 pcs/carton
Smallest bending radius	150 mm	
Weight/panel kg	~ 2,7	~ 3,3

PROCESSING

	NA	SA
Cutting, punching	✓	✓
Drilling	✓	✓
Sawing, milling	✓	—
Laser cutting	✓	✓
Hot bending	✓	—
Thermoforming	✓	—
PVA pressing	✓	—
Digital printing	On request	
Screen printing	✓	

EXTRA EQUIPMENT | ACCESSORIES

	NA	SA
PVA pre-treatment	✓	—
Special sizes	On request	
Further thicknesses	✓	

	NA	SA
Magnetic from 3 sheets	✓	
Cuttings	✓	
Flammability ASTM E84	✓	
Flammability EN13501-1	✓	





DM Silver brushed

2600 x 1000 | **NA** 10291 | **SA** 10298

2000 x 1000 | **NA** 10286 | **SA** 10296 (DISCONTINUED)



□ DM Silver brushed

Photo: CATOIR RAMAHI Visual Performers

DECO-LINE

2600 x 1000



DM Brushed

PRODUCT CHARACTERISTICS

	NA	SA
Surface material	PET	
Base material	HIPS	
Material thickness mm	1,0	1,13
Temperature resistance	until 50 °C	
Wet room suitability	■■■■□	
Abrasion resistance	■■■□□□	
Rolled packable Carton 480 x 480 mm, lay rolled goods flat upon receipt	✓ decor side outside, max. 6 pcs/carton	✓ decor side inside, max. 6 pcs/carton
Smallest bending radius	150 mm	
Weight/panel kg	~ 2,7	~ 3,3

PROCESSING

	NA	SA
Cutting, punching	✓	✓
Drilling	✓	✓
Sawing, milling	✓	—
Laser cutting	✓	✓
Hot bending	✓	—
Thermoforming	✓	—
PVA pressing	✓	—
Digital printing	✓	
Screen printing	✓	

EXTRA EQUIPMENT | ACCESSORIES

	NA	SA
PVA pre-treatment	✓	—
Special sizes	On request	
Further thicknesses	✓	

	NA	SA
Magnetic from 3 sheets	✓	
Cuttings	✓	
Flammability ASTM E84	✓	
Flammability EN13501-1	✓	

MULTISTYLE

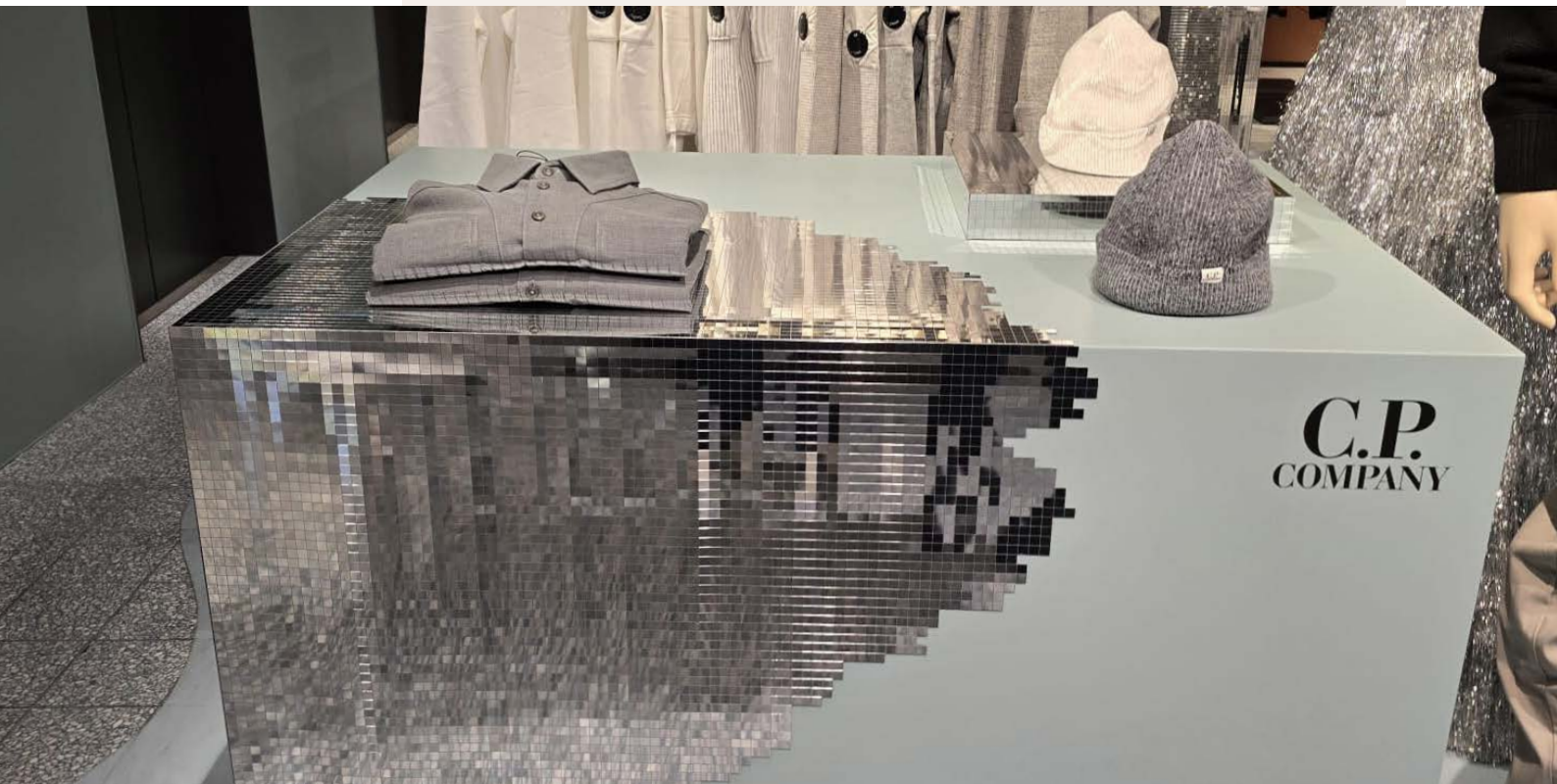
MULTISTYLE

MULTISTYLE

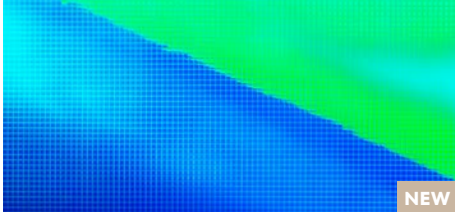
MULTISTYLE

MULTISTYLE

MULTISTYLE



The MULTISTYLE mirror surfaces in a noble mosaic look are particularly flexible and can be glued over curves without any problems. A must have in the display and decoration sector.



NEW

MS 5x5 flex Aqua

980 x 980 | SA 27809



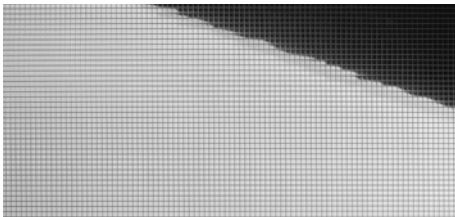
MS 5x5 flex Hollywood

980 x 980 | SA 27376



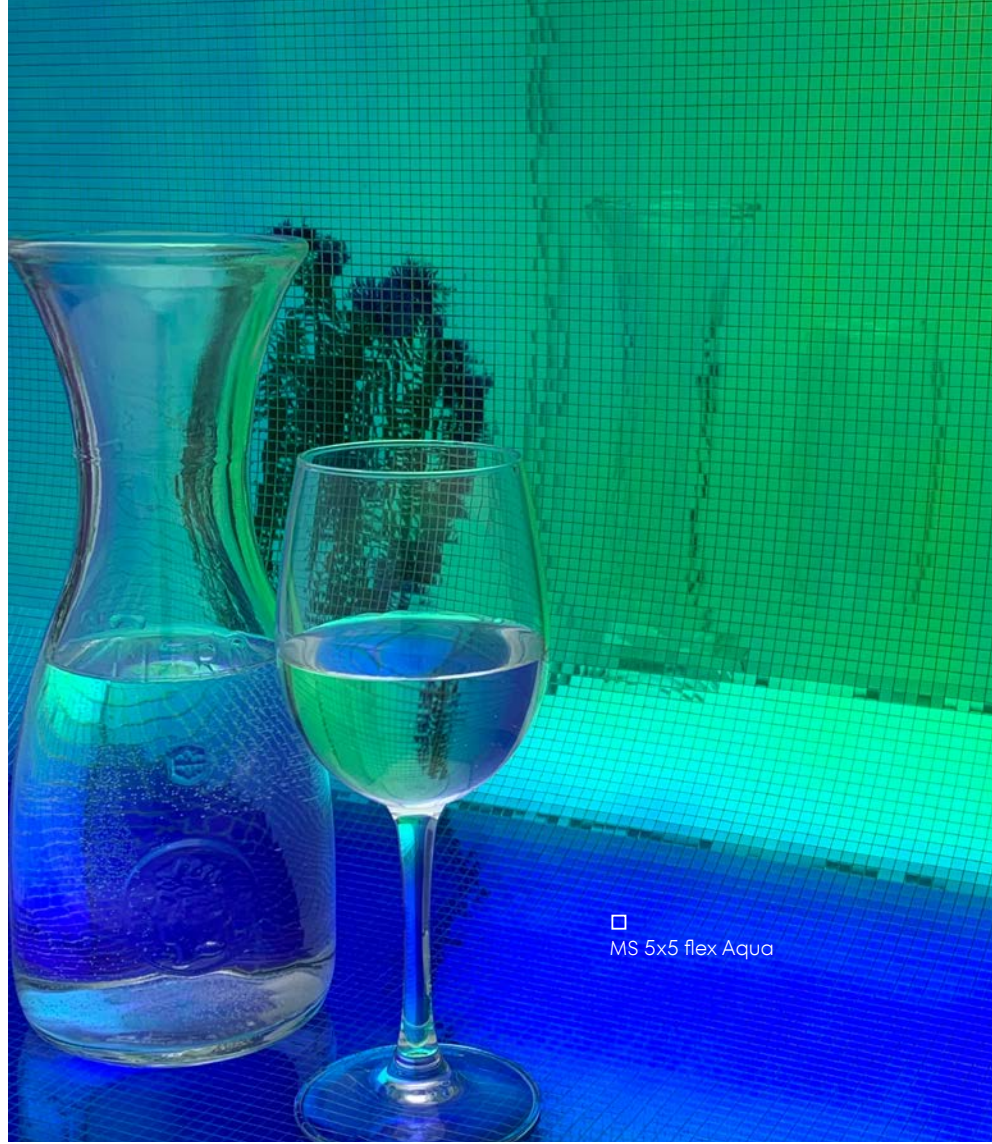
MS 5x5 flex Gold

980 x 980 | SA 27373



MS 5x5 flex Silver

980 x 980 | SA 27377



MULTISTYLE

MS 5x5

PRODUCT CHARACTERISTICS

	SA
Surface material	PET
Base material	HIPS
Material thickness mm	1,2
Temperature resistance	until 50 °C
Wet room suitability	■■■□
Abrasion resistance	■■□□□□
Rolled packable Carton 480 x 480 mm, lay rolled goods flat upon receipt	✓ decor side outside, max. 6 pcs/carton
Smallest bending radius mm	20
Weight/panel kg	~1,2

PROCESSING

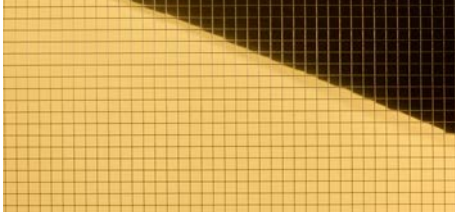
	SA
Cutting, punching	✓
Drilling	✓
Sawing, milling	—
Laser cutting	✓
Hot bending	—
Thermoforming	—
PVA pressing	—
Digital printing Silver, Hollywood	✓*
Digital printing Gold	On request*
Screen printing	—

* own printing test required, samples are gladly provided.

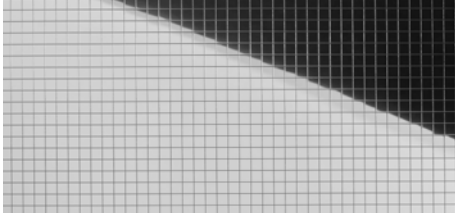
EXTRA EQUIPMENT | ACCESSORIES

	SA
PVA pre-treatment	—
Special sizes	✓
Maximum length mm	3000
Maximum width mm	1000

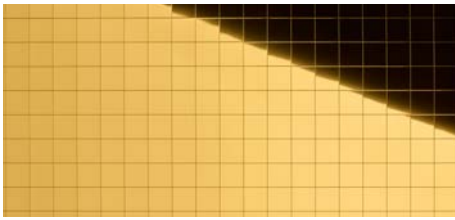
	SA
Further thicknesses	—
Magnetic from 3 sheets	✓
Cuttings	✓
Flammability ASTM E84	—
Flammability EN13501-1	—



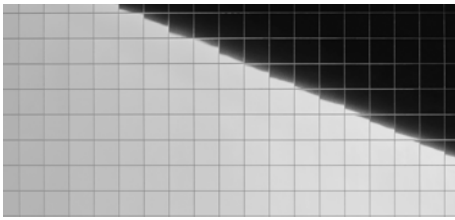
MS 10x10 flex Gold
980 x 980 | SA 27374



MS 10x10 flex Silver
980 x 980 | SA 27378



MS 20x20 flex Gold
980 x 980 | SA 27375



MS 20x20 flex Silver
980 x 980 | SA 27379



Photo: Malo Clinic at El Corte Ingles – Lisboa

MULTISTYLE

MS 10x10 / 20x20

PRODUCT CHARACTERISTICS

	SA
Surface material	PET
Base material	HIPS
Material thickness mm	1,2
Temperature resistance	until 50 °C
Wet room suitability	■■■□
Abrasion resistance	■■□□□□
Rolled packable Carton 480 x 480 mm, lay rolled goods flat upon receipt	✓ decor side outside, max. 6 pcs/carton
Smallest bending radius mm	35 MS 10x10 flex
	50 MS 20x20 flex
Weight/panel kg	~1,2

PROCESSING

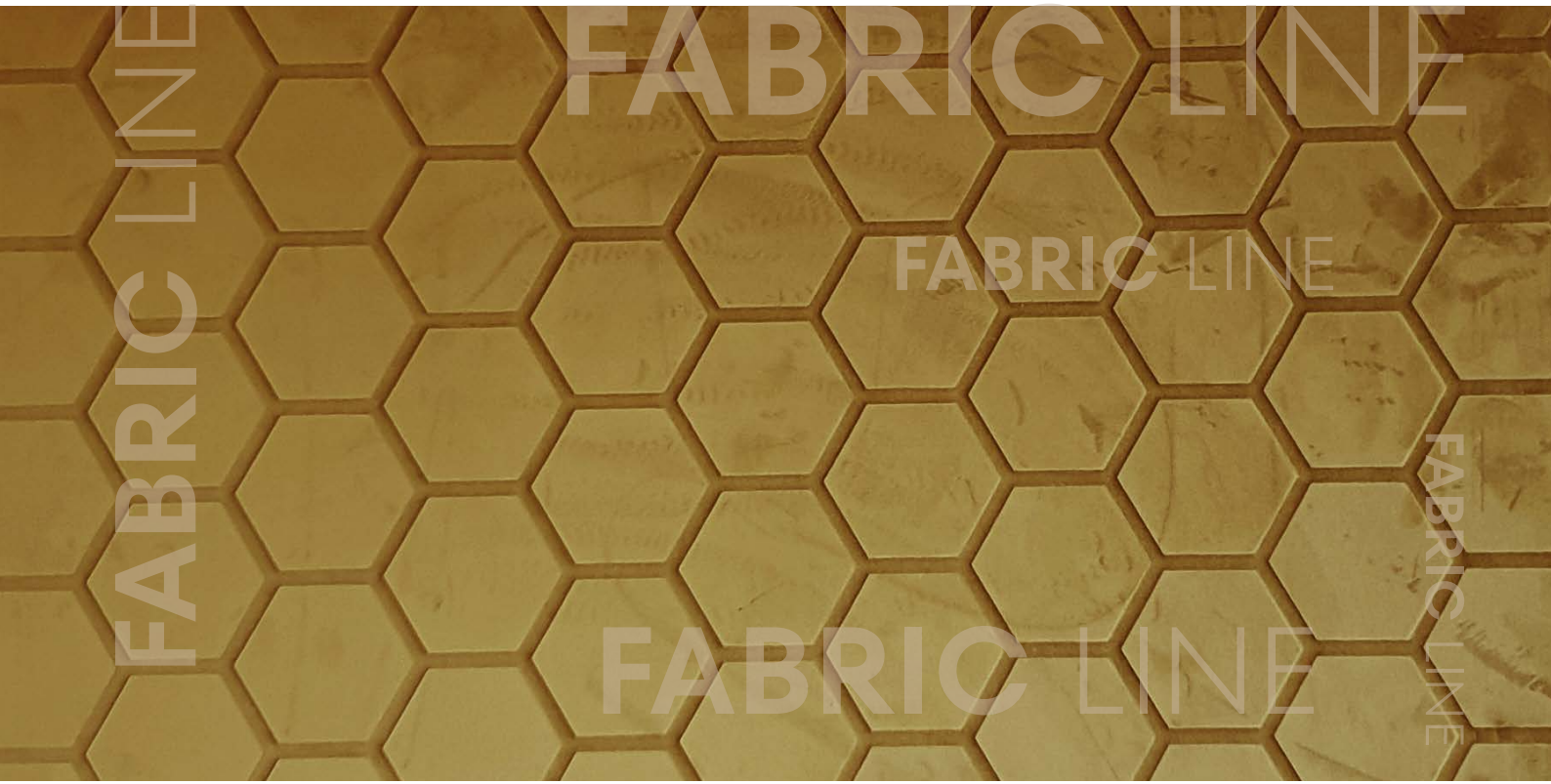
	SA
Cutting, punching	✓
Drilling	✓
Sawing, milling	—
Laser cutting	✓
Hot bending	—
Thermoforming	—
PVA pressing	—
Digital printing Silver	✓*
Digital printing Gold	On request*
Screen printing	—

* own printing test required, samples are gladly provided.

EXTRA EQUIPMENT | ACCESSORIES

	SA
PVA pre-treatment	—
Special sizes	✓
Maximum length mm	3000
Maximum width mm	1000

	SA
Further thicknesses	—
Magnetic from 3 sheets	✓
Cuttings	✓
Flammability ASTM E84	—
Flammability EN13501-1	—



FABRIC LINE



The FABRIC-LINE - smart and contemporary - offers a diverse range of different textiles. The interplay of the haptic properties, structures and colours creates a unique multi-sensory experience.

FL CUBE VELVET Bordeaux

2600 x 1000 | NA 22709 | SA 22719

FL CUBE VELVET Pearl

2600 x 1000 | NA 22710 | SA 22720

Please consider the nap direction of the surface before further processing or product installation. If design panels are not installed in the same direction, there will be a visual color difference.



□
FL CUBE VELVET Pearl

2600 x 1000



FABRIC-LINE

FL CUBE VELVET

PRODUCT CHARACTERISTICS

	NA	SA
Surface material*	PET fibre	
Base material	HIPS	
Material thickness mm	1,7	1,83
Max. relief height mm	2,2	2,33
Temperature resistance	until 50 °C	
Wet room suitability	■■■■□	
Rolled packable Carton 480 x 480 mm, lay rolled goods flat upon receipt	✓ decor side outside, max. 3 pcs/carton	✓ decor side outside, max. 3 pcs/carton
Smallest bending radius mm	150	
Weight/panel kg	~ 3,6	~ 4,2

* The product is delivered without a protective film.

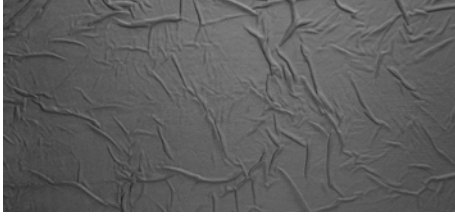
PROCESSING

	NA	SA
Cutting, punching	✓	✓
Drilling	✓	✓
Sawing	✓	—
Milling	—	—
Laser cutting	✓	✓
Hot bending	✓	—
PVA pressing	✓	—
Digital printing	—	
Screen printing	—	

EXTRA EQUIPMENT | ACCESSORIES

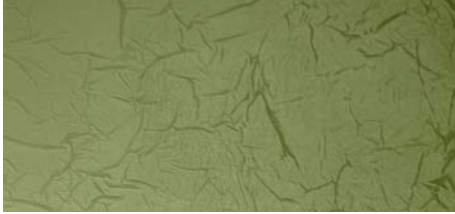
	NA	SA
PVA pre-treatment	✓	—
Special sizes	—	
Further thicknesses	On request	

	NA	SA
Magnetic from 3 sheets	✓	
Cuttings	✓	
Flammability ASTM E84	—	
Flammability EN13501-1	—	



FL CREPA VELVET Volcano

2600 x 1000 | **NA** 22706 | **SA** 22717



FL CREPA VELVET Avocado

2600 x 1000 | **NA** 22705 | **SA** 22715

Please consider the nap direction of the surface before further processing or product installation. If design panels are not installed in the same direction, there will be a visual color difference.



2600 x 1000



FABRIC-LINE

FL CREPA VELVET

PRODUCT CHARACTERISTICS

	NA	SA
Surface material*	PET fibre	
Base material	HIPS	
Material thickness mm	1,7	1,83
Max. relief height mm	2,2	2,33
Temperature resistance	until 50 °C	
Wet room suitability	■■■■■□	
Rolled packable Carton 480 x 480 mm, lay rolled goods flat upon receipt	✓	✓
	decor side outside, max. 3 pcs/carton	decor side outside, max. 3 pcs/carton
Smallest bending radius mm	150	
Weight/panel kg	~ 3,6	~ 4,2

* The product is delivered without a protective film.

PROCESSING

	NA	SA
Cutting, punching	✓	✓
Drilling	✓	✓
Sawing	✓	—
Milling	—	—
Laser cutting	✓	✓
Hot bending	✓	—
PVA pressing	✓	—
Digital printing	—	
Screen printing	—	

EXTRA EQUIPMENT | ACCESSORIES

	NA	SA
PVA pre-treatment	✓	—
Special sizes	—	
Further thicknesses	On request	

	NA	SA
Magnetic from 3 sheets	✓	
Cuttings	✓	
Flammability ASTM E84	—	
Flammability EN13501-1	—	

**FL COMB VELVET Pearl**2600 x 1000 | **NA** 22696 | **SA** 22712**FL COMB VELVET Curry**2600 x 1000 | **NA** 22695 | **SA** 22711

Please consider the nap direction of the surface before further processing or product installation. If design panels are not installed in the same direction, there will be a visual color difference.



FL COMB VELVET Pearl

2600 x 1000



FABRIC-LINE

FL COMB VELVET

PRODUCT CHARACTERISTICS

	NA	SA
Surface material*	PET fibre	
Base material	HIPS	
Material thickness mm	1,7	1,83
Max. relief height mm	2,2	2,33
Temperature resistance	until 50 °C	
Wet room suitability	■■■■□	
Rolled packable Carton 480 x 480 mm, lay rolled goods flat upon receipt	✓ decor side outside, max. 3 pcs/carton	✓ decor side outside, max. 3 pcs/carton
Smallest bending radius mm	150	
Weight/panel kg	~ 3,6	~ 4,2

* The product is delivered without a protective film.

PROCESSING

	NA	SA
Cutting, punching	✓	✓
Drilling	✓	✓
Sawing	✓	—
Milling	—	—
Laser cutting	✓	✓
Hot bending	✓	—
PVA pressing	✓	—
Digital printing	—	
Screen printing	—	

EXTRA EQUIPMENT | ACCESSORIES

	NA	SA
PVA pre-treatment	✓	—
Special sizes	—	
Further thicknesses	On request	

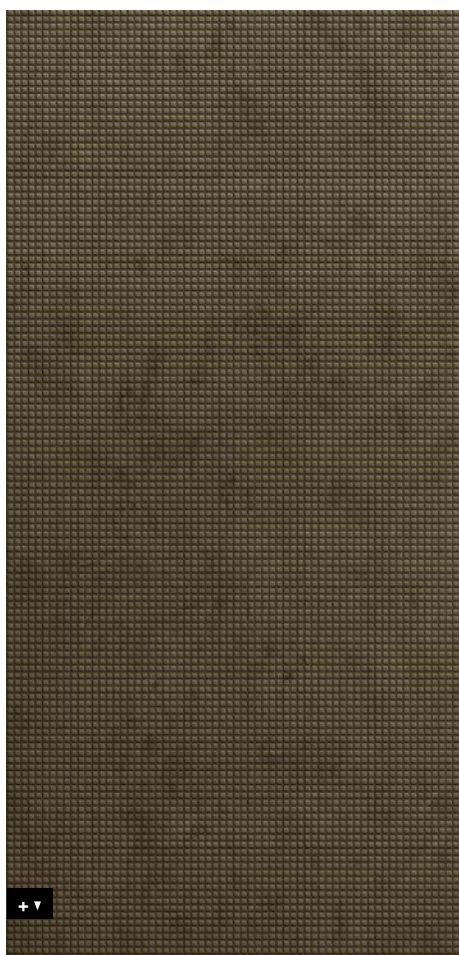
	NA	SA
Magnetic from 3 sheets	✓	
Cuttings	✓	
Flammability ASTM E84	—	
Flammability EN13501-1	—	

FL SQUARE 2 VELVET Mocha2600 x 1000 | **NA** 22703 | **SA** 22713

Please consider the nap direction of the surface before further processing or product installation. If design panels are not installed in the same direction, there will be a visual color difference.



2600 x 1000

**FABRIC-LINE****FL SQUARE 2 VELVET****PRODUCT CHARACTERISTICS**

	NA	SA
Surface material*	PET fibre	
Base material	HIPS	
Material thickness mm	1,7	1,83
Max. relief height mm	2,2	2,33
Temperature resistance	until 50 °C	
Wet room suitability	■■■■□	
Rolled packable Carton 480 x 480 mm, lay rolled goods flat upon receipt	✓ decor side outside, max. 3 pcs/carton	✓ decor side outside, max. 3 pcs/carton
Smallest bending radius mm	150	
Weight/panel kg	~ 3,6	~ 4,2

* The product is delivered without a protective film.

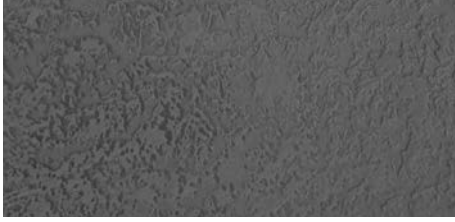
PROCESSING

	NA	SA
Cutting, punching	✓	✓
Drilling	✓	✓
Sawing	✓	—
Milling	—	—
Laser cutting	✓	✓
Thermoforming	✓	—
PVA pressing	✓	—
Digital printing	—	
Screen printing	—	

EXTRA EQUIPMENT | ACCESSORIES

	NA	SA
PVA pre-treatment	✓	—
Special sizes	—	
Further thicknesses	On request	

	NA	SA
Magnetic from 3 sheets	✓	
Cuttings	✓	
Flammability ASTM E84	—	
Flammability EN13501-1	—	



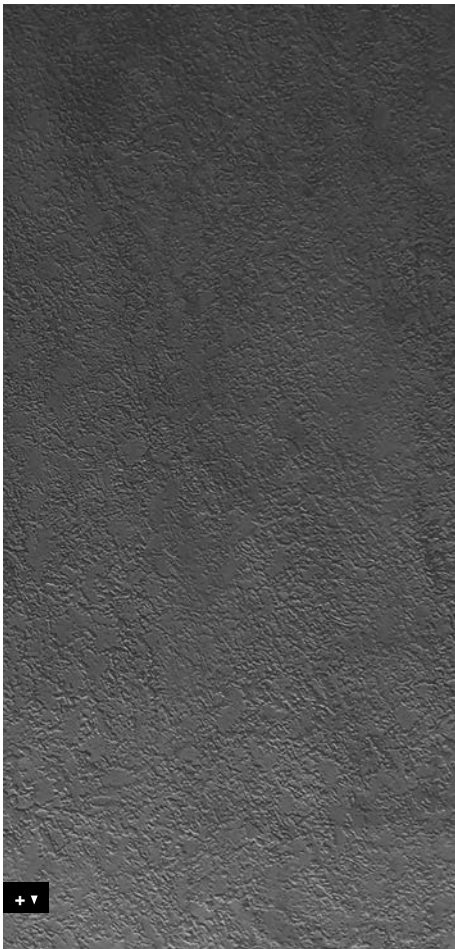
FL LAVA VELVET Volcano
2600 x 1000 | NA 22707 | SA 22718

Please consider the nap direction of the surface before further processing or product installation. If design panels are not installed in the same direction, there will be a visual color difference.



FL LAVA VELVET Volcano

2600 x 1000



FABRIC-LINE

FL LAVA VELVET

PRODUCT CHARACTERISTICS

	NA	SA
Surface material*	PET fibre	
Base material	HIPS	
Material thickness mm	1,7	2,94
Max. relief height mm	2,2	2,44
Temperature resistance	until 50 °C	
Wet room suitability	■■■■□	
Rolled packable Carton 480 x 480 mm, lay rolled goods flat upon receipt	✓ decor side outside, max. 3 pcs/carton	✓ decor side outside, max. 3 pcs/carton
Smallest bending radius mm	150	
Weight/panel kg	~ 3,6	~ 4,2

* The product is delivered without a protective film.

PROCESSING

	NA	SA
Cutting, punching	✓	✓
Drilling	✓	✓
Sawing	✓	—
Milling	—	—
Laser cutting	✓	✓
Thermoforming	✓	—
PVA pressing	✓	—
Digital printing	—	
Screen printing	—	

EXTRA EQUIPMENT | ACCESSORIES

	NA	SA
PVA pre-treatment	✓	—
Special sizes	—	
Further thicknesses	On request	

	NA	SA
Magnetic from 3 sheets	✓	
Cuttings	✓	
Flammability ASTM E84	—	
Flammability EN13501-1	—	



FL LAVA VELVET Volcano



LEATHER LINE



Animal welfare is very important to us - which is why all LEATHER-LINE products are vegan. Starting with fine leather grains, through special decorative stitching techniques to exotic reptile decorations - you cannot tell the difference to real leather.



LL ROMBO 40 Nero matt
2600 x 1000 | NA 15014 | SA 15029



LL ROMBO 40 Creme matt
2600 x 1000 | NA 13848 | SA 13863



LL ROMBO 40 Bianco matt
2600 x 1000 | NA 15025 | SA 15041



□ LL ROMBO 40
Nero matt

2600 x 1000



LEATHER-LINE

LL ROMBO 40

PRODUCT CHARACTERISTICS

	NA	SA
Surface material	PU-leather	
Base material	HIPS, PE-foam	
Material thickness mm	3,8	4,04
Max. relief height mm	5	5,24
Temperature resistance	until 50 °C	
Wet room suitability	■■■■□	
Rolled packable Carton 480 x 480 mm, lay rolled goods flat upon receipt	✓ decor side outside, max. 3 pcs/carton	✓ decor side outside, max. 3 pcs/carton
Smallest bending radius mm	300	
Weight/panel kg	~ 4,1	~ 4,7

PROCESSING

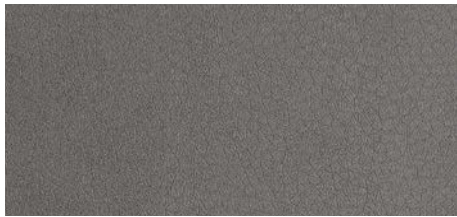
	NA	SA
Cutting, punching	✓	✓
Drilling	✓	✓
Sawing	—	—
Milling	—	—
Laser cutting	✓	✓
Hot bending	—	—
PVA pressing	—	—
Digital printing	—	
Screen printing	—	

* own printing test required, samples are gladly provided.

EXTRA EQUIPMENT | ACCESSORIES

	NA	SA
PVA pre-treatment	—	—
Special sizes	—	
Further thicknesses	—	

	NA	SA
Magnetic from 3 sheets	—	
Cuttings	✓	
Flammability ASTM E84	—	
Flammability EN13501-1	—	

LL Charcoal Dark2600 x 1000 | **NA** 19299 | **SA** 19302**LL London Clay**2600 x 1000 | **NA** 19014 | **SA** 19025**LL Charcoal Light**2600 x 1000 | **NA** 19298 | **SA** 19301**LL Dove Tale**2600 x 1000 | **NA** 19013 | **SA** 19024**LL Stony Ground**2600 x 1000 | **NA** 19012 | **SA** 19023**NEW****LL White**2600 x 1000 | **NA** 13451 | **SA** 13467

□ LL Dove Tale

**LEATHER-LINE****LEATHER-LINE****PRODUCT CHARACTERISTICS**

	NA	SA
Surface material	PU-leather	
Base material	HIPS	
Material thickness mm	1,95	2,08
Temperature resistance	until 50 °C	
Wet room suitability	■■■■□	
Rolled packable Carton 480 x 480 mm, lay rolled goods flat upon receipt	✓ decor side outside, max. 3 pcs/carton	✓ decor side outside, max. 3 pcs/carton
Smallest bending radius mm	150	
Weight/panel kg	~ 3,6	~ 4,2

PROCESSING

	NA	SA
Cutting, punching	✓	✓
Drilling	✓	✓
Sawing	✓	—
Milling	—	—
Laser cutting	✓	✓
Hot bending	✓	—
PVA pressing	✓	—
Digital printing	✓*	
Screen printing	✓*	

* own printing test required, samples are gladly provided.

EXTRA EQUIPMENT | ACCESSORIES

	NA	SA
PVA pre-treatment	✓	—
Special sizes	On request	
Further thicknesses	✓	

	NA	SA
Magnetic from 3 sheets	✓	
Cuttings	✓	
Flammability ASTM E84	—	
Flammability EN13501-1	—	



LL LEGUAN Nero

2600 x 1000 | NA 14778 | SA 14797



LL LEGUAN Copper

2600 x 1000 | NA 12884 | SA 12894



LL LEGUAN Gold

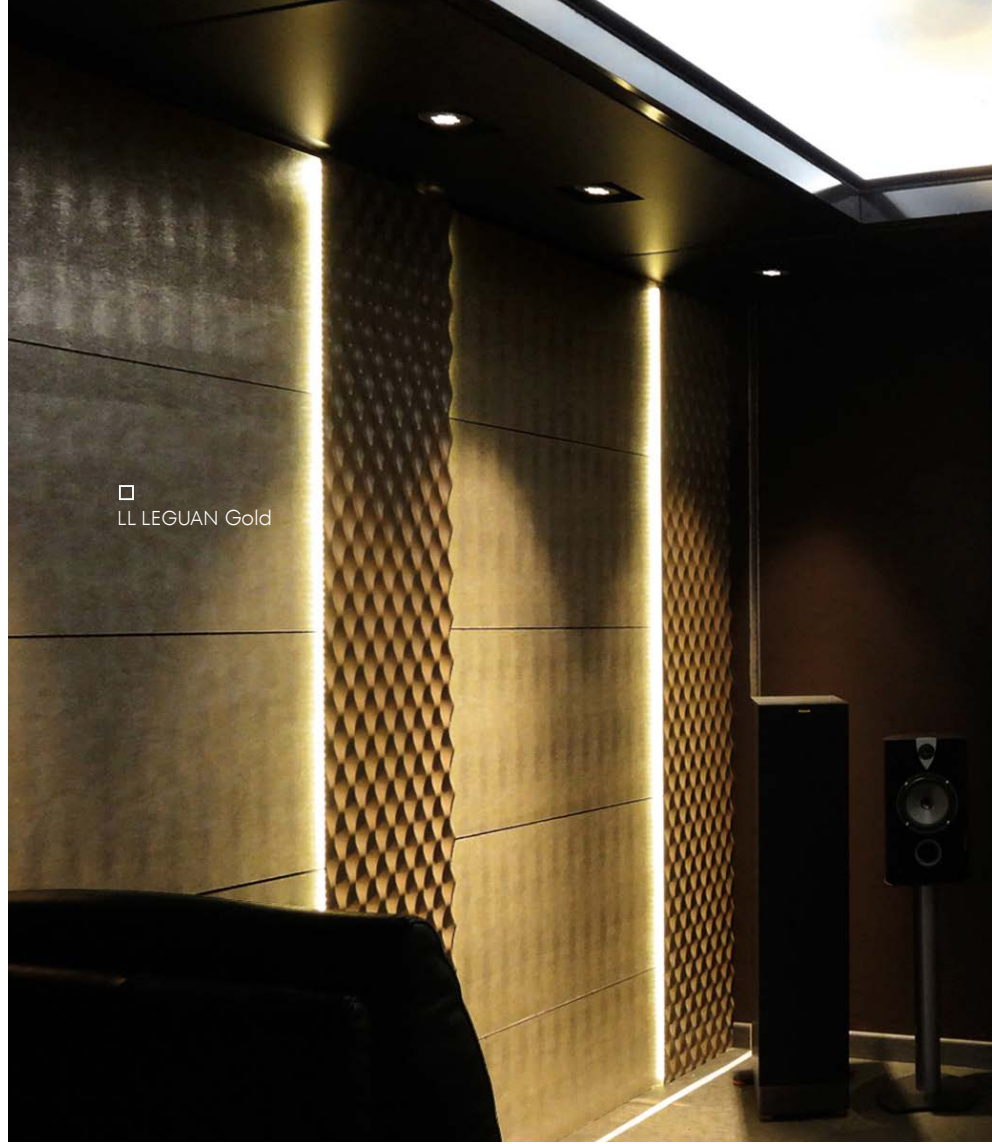
2600 x 1000 | NA 13480 | SA 13478



LL LEGUAN Silver

2600 x 1000 | NA 12883 | SA 12893

2600 x 1000



□ LL LEGUAN Gold

LEATHER-LINE

LL LEGUAN

PRODUCT CHARACTERISTICS

	NA	SA
Surface material	PU-leather	
Base material	HIPS	
Material thickness mm	1,5	1,63
Temperature resistance	until 50 °C	
Wet room suitability	■■■□	
Rolled packable Carton 480 x 480 mm, lay rolled goods flat upon receipt	✓ decor side outside, max. 3 pcs/carton	✓ decor side outside, max. 3 pcs/carton
Smallest bending radius mm	150	
Weight/panel kg	~ 3,2	~ 3,8

PROCESSING

	NA	SA
Cutting, punching	✓	✓
Drilling	✓	✓
Sawing	✓	—
Milling	—	—
Laser cutting	✓	✓
Hot bending	✓	—
PVA pressing	✓	—
Digital printing	—	
Screen printing	—	

* own printing test required, samples are gladly provided.

EXTRA EQUIPMENT | ACCESSORIES

	NA	SA
PVA pre-treatment	✓	—
Special sizes	On request	
Further thicknesses	✓	

	NA	SA
Magnetic from 3 sheets	✓	
Cuttings	✓	
Flammability ASTM E84	—	
Flammability EN13501-1	—	



LL LEGUAN Bianco

2600 x 1000 | NA 15609 | SA 15610



2600 x 1000



LEATHER-LINE

LL LEGUAN

PRODUCT CHARACTERISTICS

	NA	SA
Surface material	PU-leather	
Base material	HIPS	
Material thickness mm	1,4	1,53
Temperature resistance	until 50 °C	
Wet room suitability	■■■■□	
Rolled packable Carton 480 x 480 mm, lay rolled goods flat upon receipt	✓ decor side outside, max. 3 pcs/carton	✓ decor side outside, max. 3 pcs/carton
Smallest bending radius mm	150	
Weight/panel kg	~ 3,2	~ 3,8

PROCESSING

	NA	SA
Cutting, punching	✓	✓
Drilling	✓	✓
Sawing	✓	—
Milling	—	—
Laser cutting	✓	✓
Hot bending	✓	—
PVA pressing	✓	—
Digital printing	—	
Screen printing	—	

* own printing test required, samples are gladly provided.

EXTRA EQUIPMENT | ACCESSORIES

	NA	SA
PVA pre-treatment	✓	—
Special sizes	On request	
Further thicknesses	✓	

	NA	SA
Magnetic from 3 sheets	✓	
Cuttings	✓	
Flammability ASTM E84	—	
Flammability EN13501-1	—	





NATURE LINE



With the sustainable and particularly light decorative panels of the NATURE-LINE large wall surfaces can be designed quickly and easily. The FSC®-certified and self-adhesive products can be glued to all substrates without expansion gaps.



WL Carbonized Wood Nature
2600 x 1000 | SA 25549



NATURE-LINE (WL)

WL Carbonized Wood Nature

2600 x 1000



PRODUCT CHARACTERISTICS

	SA
Surface material*	impregnated paper
Base material	Natural fibre
Material thickness mm	1,35
Temperature resistance	until 50 °C
Wet room suitability	■□□□
Abrasion resistance	■ ■ ■ □ □ □ □
Rolled packable Carton 480 x 480 mm, lay rolled goods flat upon receipt	✓ decor side outside, max. 3 pcs/carton
Smallest bending radius mm	300
Weight/panel kg	~ 2,2

* The product is delivered without a protective film.

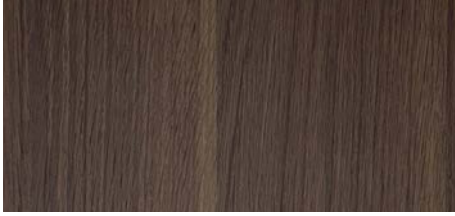
PROCESSING

	SA
Cutting, punching	✓
Drilling	✓
Sawing (supported by a panel)	✓
Milling	—
Laser cutting	—
Hot bending	—
Thermoforming	—
PVA pressing	—
Digital printing	—
Screen printing	On request

EXTRA EQUIPMENT | ACCESSORIES

	SA
PVA pre-treatment	—
Special sizes	On request
Further thicknesses	—

	SA
Magnetic from 3 sheets	✓
Cuttings	✓
Flammability ASTM E84	—
Flammability EN13501-1	—



WL Nutwood Nature
2600 x 1000 | SA 25547



NATURE-LINE (WL)

WL Nutwood Nature

2600 x 1000



PRODUCT CHARACTERISTICS

	SA
Surface material*	impregnated paper
Base material	Natural fibre
Material thickness mm	1,35
Temperature resistance	until 50 °C
Wet room suitability	■□□□□
Abrasion resistance	■ ■ ■ □ □ □ □
Rolled packable Carton 480 x 480 mm, lay rolled goods flat upon receipt	✓ decor side outside, max. 3 pcs/carton
Smallest bending radius mm	300
Weight/panel kg	~ 2,2

* The product is delivered without a protective film.

PROCESSING

	SA
Cutting, punching	✓
Drilling	✓
Sawing (supported by a panel)	✓
Milling	—
Laser cutting	—
Hot bending	—
Thermoforming	—
PVA pressing	—
Digital printing	—
Screen printing	On request

EXTRA EQUIPMENT | ACCESSORIES

	SA
PVA pre-treatment	—
Special sizes	On request
Further thicknesses	—

	SA
Magnetic from 3 sheets	✓
Cuttings	✓
Flammability ASTM E84	—
Flammability EN13501-1	—



WL Nutwood Country Nature
2600 x 1000 | SA 25546



□ WL Nutwood Country Nature

2600 x 1000



NATURE-LINE (WL)

WL Nutwood Country Nature

PRODUCT CHARACTERISTICS

	SA
Surface material*	impregnated paper
Base material	Natural fibre
Material thickness mm	1,35
Temperature resistance	until 50 °C
Wet room suitability	■□□□
Abrasion resistance	■■■□□□
Rolled packable Carton 480 x 480 mm, lay rolled goods flat upon receipt	✓ decor side outside, max. 3 pcs/carton
Smallest bending radius mm	300
Weight/panel kg	~ 2,2

* The product is delivered without a protective film.

PROCESSING

	SA
Cutting, punching	✓
Drilling	✓
Sawing (supported by a panel)	✓
Milling	—
Laser cutting	—
Hot bending	—
Thermoforming	—
PVA pressing	—
Digital printing	—
Screen printing	On request

EXTRA EQUIPMENT | ACCESSORIES

	SA
PVA pre-treatment	—
Special sizes	On request
Further thicknesses	—

	SA
Magnetic from 3 sheets	✓
Cuttings	✓
Flammability ASTM E84	—
Flammability EN13501-1	—



WL Sessile OAK Nature
2600 x 1000 | SA 25511



□ WL Sessile OAK Nature

2600 x 1000



NATURE-LINE (WL)

WL Sessile OAK Nature

PRODUCT CHARACTERISTICS

	SA
Surface material*	impregnated paper
Base material	Natural fibre
Material thickness mm	1,35
Temperature resistance	until 50 °C
Wet room suitability	■□□□□
Abrasion resistance	■ ■ ■ □ □ □ □
Rolled packable Carton 480 x 480 mm, lay rolled goods flat upon receipt	✓ decor side outside, max. 3 pcs/carton
Smallest bending radius mm	300
Weight/panel kg	~ 2,2

* The product is delivered without a protective film.

PROCESSING

	SA
Cutting, punching	✓
Drilling	✓
Sawing (supported by a panel)	✓
Milling	—
Laser cutting	—
Hot bending	—
Thermoforming	—
PVA pressing	—
Digital printing	—
Screen printing	On request

EXTRA EQUIPMENT | ACCESSORIES

	SA
PVA pre-treatment	—
Special sizes	On request
Further thicknesses	—

	SA
Magnetic from 3 sheets	✓
Cuttings	✓
Flammability ASTM E84	—
Flammability EN13501-1	—





WL Sunwood Nature
2600 x 1000 | SA 25896



□ WL Sunwood Nature

2600 x 1000



NATURE-LINE (WL)

WL Sunwood Nature

PRODUCT CHARACTERISTICS

	SA
Surface material*	impregnated paper
Base material	Natural fibre
Material thickness mm	1,35
Temperature resistance	until 50 °C
Wet room suitability	■□□□
Abrasion resistance	■ ■ ■ ■ □ □ □
Rolled packable Carton 480 x 480 mm, lay rolled goods flat upon receipt	✓ decor side outside, max. 3 pcs/carton
Smallest bending radius mm	300
Weight/panel kg	~ 2,2

* The product is delivered without a protective film.

PROCESSING

	SA
Cutting, punching	✓
Drilling	✓
Sawing (supported by a panel)	✓
Milling	—
Laser cutting	—
Hot bending	—
Thermoforming	—
PVA pressing	—
Digital printing	On request
Screen printing	✓*

* own printing test required, samples are gladly provided.

EXTRA EQUIPMENT | ACCESSORIES

	SA
PVA pre-treatment	—
Special sizes	On request
Further thicknesses	—

	SA
Magnetic from 3 sheets	✓
Cuttings	✓
Flammability ASTM E84	—
Flammability EN13501-1	—



WL Willow OAK Nature
2600 x 1000 | SA 25895



□ WL Willow OAK Nature

2600 x 1000



NATURE-LINE (WL)

WL Willow OAK Nature

PRODUCT CHARACTERISTICS

	SA
Surface material*	impregnated paper
Base material	Natural fibre
Material thickness mm	1,35
Temperature resistance	until 50 °C
Wet room suitability	■□□□
Abrasion resistance	■■■■□□
Rolled packable Carton 480 x 480 mm, lay rolled goods flat upon receipt	✓ decor side outside, max. 3 pcs/carton
Smallest bending radius mm	300
Weight/panel kg	~ 2,2

* The product is delivered without a protective film.

PROCESSING

	SA
Cutting, punching	✓
Drilling	✓
Sawing (supported by a panel)	✓
Milling	—
Laser cutting	—
Hot bending	—
Thermoforming	—
PVA pressing	—
Digital printing	On request
Screen printing	✓*

* own printing test required, samples are gladly provided.

EXTRA EQUIPMENT | ACCESSORIES

	SA
PVA pre-treatment	—
Special sizes	On request
Further thicknesses	—

	SA
Magnetic from 3 sheets	✓
Cuttings	✓
Flammability ASTM E84	—
Flammability EN13501-1	—





WL OAK TREE Light Nature
2600 x 1000 | SA 25544



□ WL OAK TREE Light Nature

NATURE-LINE (WL)

WL OAK TREE Light Nature

2600 x 1000



PRODUCT CHARACTERISTICS

	SA
Surface material*	impregnated paper
Base material	Natural fibre
Material thickness mm	1,35
Temperature resistance	until 50 °C
Wet room suitability	■□□□
Abrasion resistance	■ ■ ■ ■ □ □ □
Rolled packable Carton 480 x 480 mm, lay rolled goods flat upon receipt	✓ decor side outside, max. 3 pcs/carton
Smallest bending radius mm	300
Weight/panel kg	~ 2,2

* The product is delivered without a protective film.

PROCESSING

	SA
Cutting, punching	✓
Drilling	✓
Sawing (supported by a panel)	✓
Milling	—
Laser cutting	—
Hot bending	—
Thermoforming	—
PVA pressing	—
Digital printing	On request
Screen printing	On request

EXTRA EQUIPMENT | ACCESSORIES

	SA
PVA pre-treatment	—
Special sizes	On request
Further thicknesses	—

	SA
Magnetic from 3 sheets	✓
Cuttings	✓
Flammability ASTM E84	—
Flammability EN13501-1	—





DM CEMENT Dark Nature
2600 x 1000 | SA 25515



□ DM CEMENT Dark Nature

NATURE-LINE (DM)

DM CEMENT Dark Nature

2600 x 1000



PRODUCT CHARACTERISTICS

	SA
Surface material*	impregnated paper
Base material	Natural fibre
Material thickness mm	1,35
Temperature resistance	until 50 °C
Wet room suitability	■□□□□
Abrasion resistance	■ ■ ■ □ □ □ □
Rolled packable Carton 480 x 480 mm, lay rolled goods flat upon receipt	✓ decor side outside, max. 3 pcs/carton
Smallest bending radius mm	300
Weight/panel kg	~ 2,2

* The product is delivered without a protective film.

PROCESSING

	SA
Cutting, punching	✓
Drilling	✓
Sawing (supported by a panel)	✓
Milling	—
Laser cutting	—
Hot bending	—
Thermoforming	—
PVA pressing	—
Digital printing	On request
Screen printing	On request

EXTRA EQUIPMENT | ACCESSORIES

	SA
PVA pre-treatment	—
Special sizes	On request
Further thicknesses	—

	SA
Magnetic from 3 sheets	✓
Cuttings	✓
Flammability ASTM E84	—
Flammability EN13501-1	—



DM Corten Nature
2600 x 1000 | SA 25548



□ DM Corten Nature

NATURE-LINE (DM)

DM Corten Nature

2600 x 1000



PRODUCT CHARACTERISTICS

	SA
Surface material*	impregnated paper
Base material	Natural fibre
Material thickness mm	1,45
Temperature resistance	until 50 °C
Wet room suitability	■□□□
Abrasion resistance	■■■□□□
Rolled packable Carton 480 x 480 mm, lay rolled goods flat upon receipt	✓ decor side outside, max. 3 pcs/carton
Smallest bending radius mm	300
Weight/panel kg	~ 2,2

* The product is delivered without a protective film.

PROCESSING

	SA
Cutting, punching	✓
Drilling	✓
Sawing (supported by a panel)	✓
Milling	—
Laser cutting	—
Hot bending	—
Thermoforming	—
PVA pressing	—
Digital printing	On request
Screen printing	On request

EXTRA EQUIPMENT | ACCESSORIES

	SA
PVA pre-treatment	—
Special sizes	On request
Further thicknesses	—

	SA
Magnetic from 3 sheets	✓
Cuttings	✓
Flammability ASTM E84	—
Flammability EN13501-1	—



DM LIMESTONE Grey Nature
2600 x 1000 | SA 25894



□ DM LIMESTONE Grey Nature

2600 x 1000



NATURE-LINE (DM)

DM LIMESTONE Grey Nature

PRODUCT CHARACTERISTICS

	SA
Surface material*	impregnated paper
Base material	Natural fibre
Material thickness mm	1,35
Temperature resistance	until 50 °C
Wet room suitability	■□□□
Abrasion resistance	■■■■□□
Rolled packable Carton 480 x 480 mm, lay rolled goods flat upon receipt	✓ decor side outside, max. 3 pcs/carton
Smallest bending radius mm	300
Weight/panel kg	~ 2,2

* The product is delivered without a protective film.

PROCESSING

	SA
Cutting, punching	✓
Drilling	✓
Sawing (supported by a panel)	✓
Milling	—
Laser cutting	—
Hot bending	—
Thermoforming	—
PVA pressing	—
Digital printing	✓*
Screen printing	✓*

* own printing test required, samples are gladly provided.

EXTRA EQUIPMENT | ACCESSORIES

	SA
PVA pre-treatment	—
Special sizes	On request
Further thicknesses	—

	SA
Magnetic from 3 sheets	✓
Cuttings	✓
Flammability ASTM E84	—
Flammability EN13501-1	—



DM CEMENT Light Nature
2600 x 1000 | SA 25516

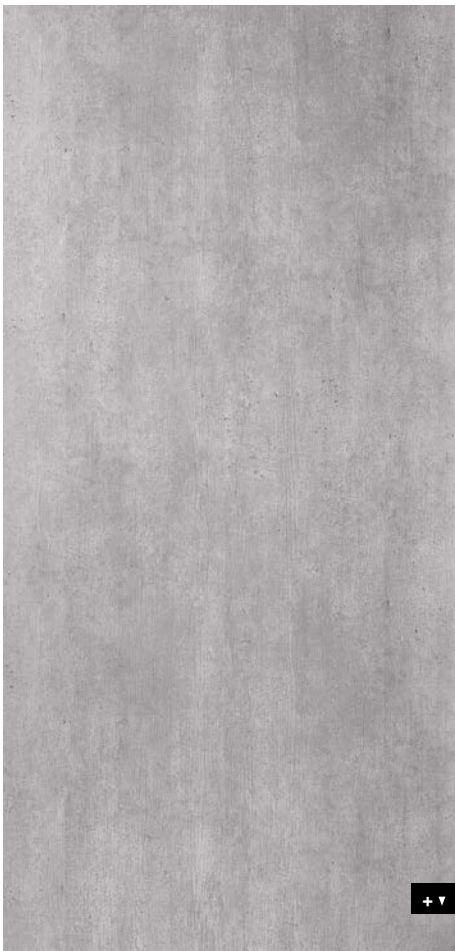


□
DM CEMENT Light Nature

NATURE-LINE (DM)

DM CEMENT Light Nature

2600 x 1000



PRODUCT CHARACTERISTICS

	SA
Surface material*	impregnated paper
Base material	Natural fibre
Material thickness mm	1,35
Temperature resistance	until 50 °C
Wet room suitability	■□□□
Abrasion resistance	■■■■□□
Rolled packable Carton 480 x 480 mm, lay rolled goods flat upon receipt	✓ decor side outside, max. 3 pcs/carton
Smallest bending radius mm	300
Weight/panel kg	~ 2,2

* The product is delivered without a protective film.

PROCESSING

	SA
Cutting, punching	✓
Drilling	✓
Sawing (supported by a panel)	✓
Milling	—
Laser cutting	—
Hot bending	—
Thermoforming	—
PVA pressing	—
Digital printing	On request
Screen printing	On request

EXTRA EQUIPMENT | ACCESSORIES

	SA
PVA pre-treatment	—
Special sizes	On request
Further thicknesses	—

	SA
Magnetic from 3 sheets	✓
Cuttings	✓
Flammability ASTM E84	—
Flammability EN13501-1	—





DM MARBLE White Nature
2600 x 1000 | SA 25545



□
DM MARBLE White Nature

NATURE-LINE (DM)

DM MARBLE White Nature

2600 x 1000



PRODUCT CHARACTERISTICS

	SA
Surface material*	impregnated paper
Base material	Natural fibre
Material thickness mm	1,35
Temperature resistance	until 50 °C
Wet room suitability	■□□□□
Abrasion resistance	■ ■ ■ ■ □ □ □
Rolled packable Carton 480 x 480 mm, lay rolled goods flat upon receipt	✓ decor side outside, max. 3 pcs/carton
Smallest bending radius mm	300
Weight/panel kg	~ 2,2

* The product is delivered without a protective film.

PROCESSING

	SA
Cutting, punching	✓
Drilling	✓
Sawing (supported by a panel)	✓
Milling	—
Laser cutting	—
Hot bending	—
Thermoforming	—
PVA pressing	—
Digital printing	On request
Screen printing	✓*

* own printing test required, samples are gladly provided.

EXTRA EQUIPMENT | ACCESSORIES

	SA
PVA pre-treatment	—
Special sizes	On request
Further thicknesses	—

	SA
Magnetic from 3 sheets	✓
Cuttings	✓
Flammability ASTM E84	—
Flammability EN13501-1	—



SIBUGLAS

SIBUGLAS

SIBUGLAS

SIBUGLAS

SIBUGLAS

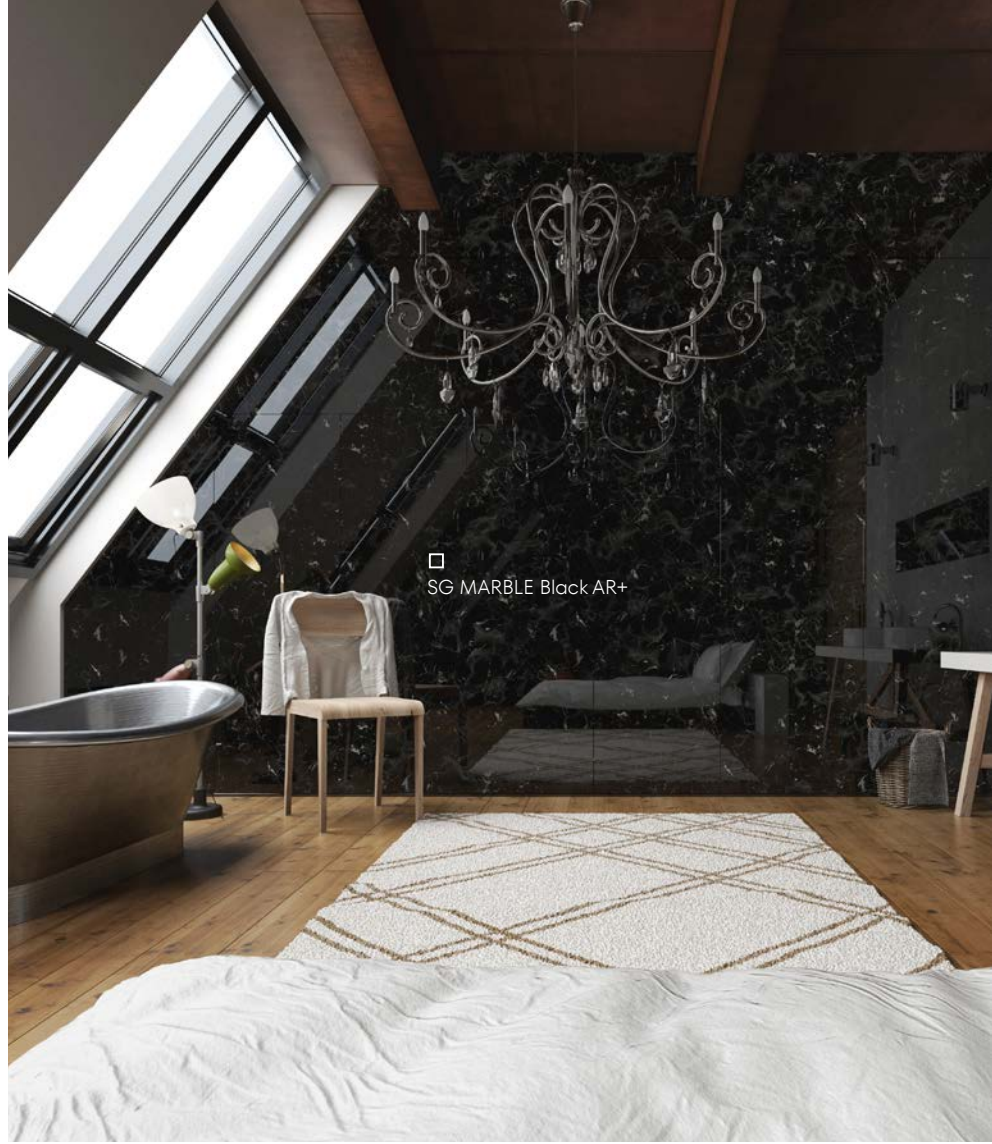
SIBUGLAS



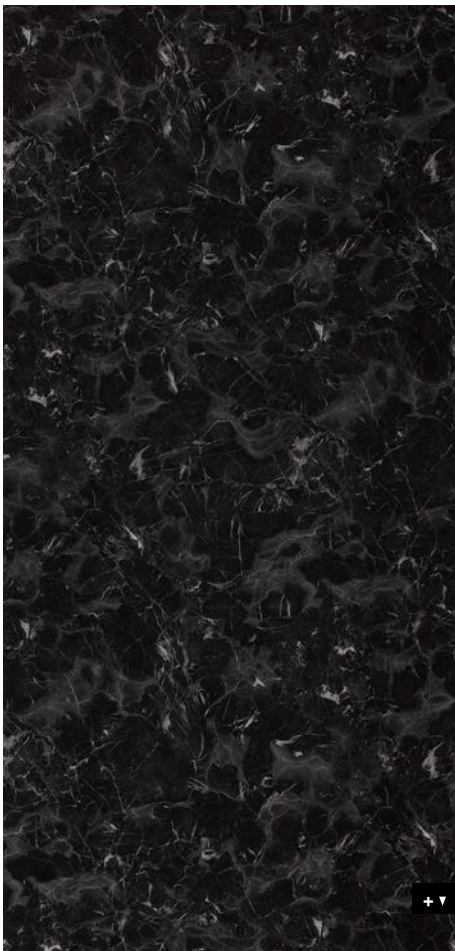
Scratch-resistant high-gloss surfaces combined with extraordinary designs create the basis for long-lasting design objects. The real glass effect creates a revolutionary depth effect and thanks to its material properties, SIBUGLAS scores with low weight and a highly reduced risk of breakage.



SG MARBLE Black AR+
2600 x 1000 | NA 19330 | SA 19341



2600 x 1000



SIBUGLAS scratch-resistant

SG MARBLE Black AR+

PRODUCT CHARACTERISTICS

	NA	SA
Surface material = Base material	PMMA AR+	
Back side material	Paper	
Material thickness mm	2,1	2,23
Temperature resistance	until 50 °C	
Wet room suitability	■■■■□	
Abrasion resistance	■■■■■■■	
Rolled packable	—	—
Smallest bending radius mm	1000	
Weight/panel kg	~7	~7,6

PROCESSING

	NA	SA
Cutting, punching	—	—
Drilling	✓	✓
Sawing (supported by a panel)	✓	✓
Milling (supported by a panel)	✓	✓
Laser cutting	✓	✓
Hot bending	—	—
PVA pressing	✓	—
Digital printing	✓*	
Screen printing	✓*	

* own printing test required, samples are gladly provided.

EXTRA EQUIPMENT | ACCESSORIES

	NA	SA
PVA pre-treatment	—	—
Special sizes	On request	
Further thicknesses	—	

	NA	SA
Magnetic from 3 sheets	✓	
Cuttings	✓	
Flammability ASTM E84	—	
Flammability EN13501-1	—	



SG MARBLE Grey AR+
2600 x 1000 | NA 19333 | SA 19344



2600 x 1000



SIBUGLAS scratch-resistant

SG MARBLE Grey AR+

PRODUCT CHARACTERISTICS

	NA	SA
Surface material = Base material	PMMA AR+	
Back side material	Paper	
Material thickness mm	2,1	2,23
Temperature resistance	until 50 °C	
Wet room suitability	■■■■■□	
Abrasion resistance	■■■■■■■■	
Rolled packable	—	—
Smallest bending radius mm	1000	
Weight/panel kg	~7	~7,6

PROCESSING

	NA	SA
Cutting, punching	—	—
Drilling	✓	✓
Sawing (supported by a panel)	✓	✓
Milling (supported by a panel)	✓	✓
Laser cutting	✓	✓
Hot bending	—	—
PVA pressing	✓	—
Digital printing	✓*	
Screen printing	✓*	

* own printing test required, samples are gladly provided.

EXTRA EQUIPMENT | ACCESSORIES

	NA	SA
PVA pre-treatment	—	—
Special sizes	On request	
Further thicknesses	—	

	NA	SA
Magnetic from 3 sheets	✓	
Cuttings	✓	
Flammability ASTM E84	—	
Flammability EN13501-1	—	



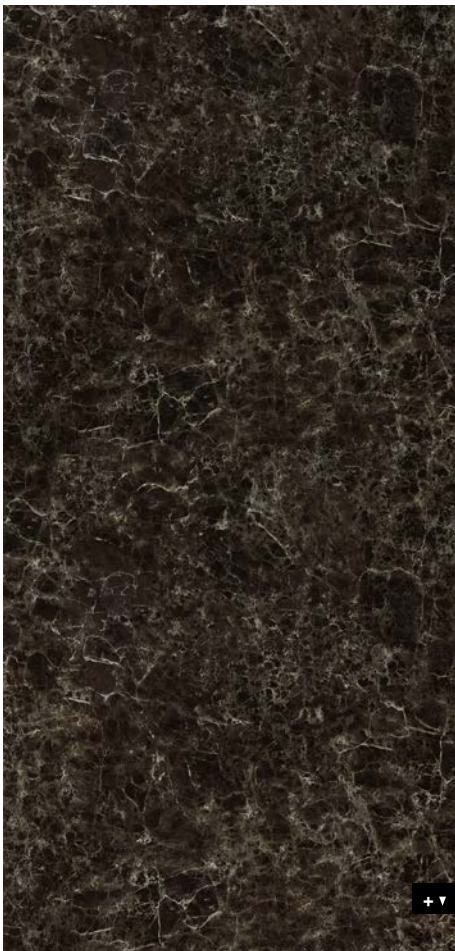
SG MARBLE Emperador AR+
2600 x 1000 | NA 19332 | SA 19343



□ SG MARBLE Emperador AR+

Photo: © Lassi Saijets Designstudio Visionary Design Partners Helsinki, Oy, Suite Finland

2600 x 1000



SIBUGLAS scratch-resistant

SG MARBLE Emperador AR+

PRODUCT CHARACTERISTICS

	NA	SA
Surface material = Base material	PMMA AR+	
Back side material	Paper	
Material thickness mm	2,1	2,23
Temperature resistance	until 50 °C	
Wet room suitability	■■■■□	
Abrasion resistance	■■■■■■■	
Rolled packable	—	—
Smallest bending radius mm	1000	
Weight/panel kg	~7	~7,6

PROCESSING

	NA	SA
Cutting, punching	—	—
Drilling	✓	✓
Sawing (supported by a panel)	✓	✓
Milling (supported by a panel)	✓	✓
Laser cutting	✓	✓
Hot bending	—	—
PVA pressing	✓	—
Digital printing	✓*	
Screen printing	✓*	

* own printing test required, samples are gladly provided.

EXTRA EQUIPMENT | ACCESSORIES

	NA	SA
PVA pre-treatment	—	—
Special sizes	On request	
Further thicknesses	—	

	NA	SA
Magnetic from 3 sheets	✓	
Cuttings	✓	
Flammability ASTM E84	—	
Flammability EN13501-1	—	





SG MARBLE Brown AR+
2600 x 1000 | NA 19331 | SA 19342



□ SG MARBLE Brown AR+

2600 x 1000



SIBUGLAS scratch-resistant

SG MARBLE Brown AR+

PRODUCT CHARACTERISTICS

	NA	SA
Surface material = Base material	PMMA AR+	
Back side material	Paper	
Material thickness mm	2,1	2,23
Temperature resistance	until 50 °C	
Wet room suitability	■■■■□	
Abrasion resistance	■■■■■■■	
Rolled packable	—	—
Smallest bending radius mm	1000	
Weight/panel kg	~ 7	~ 7,6

PROCESSING

	NA	SA
Cutting, punching	—	—
Drilling	✓	✓
Sawing (supported by a panel)	✓	✓
Milling (supported by a panel)	✓	✓
Laser cutting	✓	✓
Hot bending	—	—
PVA pressing	✓	—
Digital printing	✓*	
Screen printing	✓*	

* own printing test required, samples are gladly provided.

EXTRA EQUIPMENT | ACCESSORIES

	NA	SA
PVA pre-treatment	—	—
Special sizes	On request	
Further thicknesses	—	

	NA	SA
Magnetic from 3 sheets	✓	
Cuttings	✓	
Flammability ASTM E84	—	
Flammability EN13501-1	—	



SG MARBLE Alpine AR+
2600 x 1000 | NA 19329 | SA 19340



□ SG MARBLE Alpine AR+

2600 x 1000



SIBUGLAS scratch-resistant

SG MARBLE Alpine AR+

PRODUCT CHARACTERISTICS

	NA	SA
Surface material = Base material	PMMA AR+	
Back side material	Paper	
Material thickness mm	2,1	2,23
Temperature resistance	until 50 °C	
Wet room suitability	■■■■□	
Abrasion resistance	■■■■■■■	
Rolled packable	—	—
Smallest bending radius mm	1000	
Weight/panel kg	~ 7	~ 7,6

PROCESSING

	NA	SA
Cutting, punching	—	—
Drilling	✓	✓
Sawing (supported by a panel)	✓	✓
Milling (supported by a panel)	✓	✓
Laser cutting	✓	✓
Hot bending	—	—
PVA pressing	✓	—
Digital printing	✓*	
Screen printing	✓*	

* own printing test required, samples are gladly provided.

EXTRA EQUIPMENT | ACCESSORIES

	NA	SA
PVA pre-treatment	—	—
Special sizes	On request	
Further thicknesses	—	

	NA	SA
Magnetic from 3 sheets	✓	
Cuttings	✓	
Flammability ASTM E84	—	
Flammability EN13501-1	—	



SG MARBLE White AR+
2600 x 1000 | NA 19334 | SA 19345



□ SG MARBLE White AR+

2600 x 1000



SIBUGLAS scratch-resistant

SG MARBLE White AR+

PRODUCT CHARACTERISTICS

	NA	SA
Surface material = Base material	PMMA AR+	
Back side material	Paper	
Material thickness mm	2,1	2,23
Temperature resistance	until 50 °C	
Wet room suitability	■■■■□	
Abrasion resistance	■■■■■■■	
Rolled packable	—	—
Smallest bending radius mm	1000	
Weight/panel kg	~ 7	~ 7,6

PROCESSING

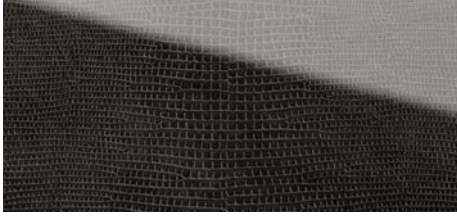
	NA	SA
Cutting, punching	—	—
Drilling	✓	✓
Sawing (supported by a panel)	✓	✓
Milling (supported by a panel)	✓	✓
Laser cutting	✓	✓
Hot bending	—	—
PVA pressing	✓	—
Digital printing	✓*	
Screen printing	✓*	

* own printing test required, samples are gladly provided.

EXTRA EQUIPMENT | ACCESSORIES

	NA	SA
PVA pre-treatment	—	—
Special sizes	On request	
Further thicknesses	—	

	NA	SA
Magnetic from 3 sheets	✓	
Cuttings	✓	
Flammability ASTM E84	—	
Flammability EN13501-1	—	



SG LEGUAN Nero AR+
2600 x 1000 | NA 18089 | SA 18095



SG LEGUAN Copper AR+
2600 x 1000 | NA 16976 | SA 16981



SG LEGUAN Gold AR+
2600 x 1000 | NA 16977 | SA 16982



SG LEGUAN Silver AR+
2600 x 1000 | NA 16975 | SA 16979



□ SG LEGUAN
Copper AR+

SIBUGLAS scratch-resistant

SG LEGUAN AR+

PRODUCT CHARACTERISTICS

	NA	SA
Surface material = Base material	PMMA AR+	
Back side material	PU-leather	
Material thickness mm	2,6	2,73
Temperature resistance	until 50 °C	
Wet room suitability	■■■■□	
Abrasion resistance	■■■■■■■	
Rolled packable	—	—
Smallest bending radius mm	1000	
Weight/panel kg	~7,2	~7,8

PROCESSING

	NA	SA
Cutting, punching	—	—
Drilling	✓	✓
Sawing (supported by a panel)	✓	✓
Milling	—	—
Laser cutting	✓	✓
Hot bending	—	—
PVA pressing	✓	—
Digital printing	✓*	
Screen printing	✓*	

* own printing test required, samples are gladly provided.

EXTRA EQUIPMENT | ACCESSORIES

	NA	SA
PVA pre-treatment	—	—
Special sizes	On request	
Further thicknesses	—	

	NA	SA
Magnetic from 3 sheets	✓	
Cuttings	✓	
Flammability ASTM E84	—	
Flammability EN13501-1	—	



SG VINTAGE Copper AR+

2600 x 1000 | **NA** 17198 | **SA** 17200



SG VINTAGE Silver AR+

2600 x 1000 | **NA** 17197 | **SA** 17199



□ SG VINTAGE Copper AR+

2600 x 1000



SIBUGLAS scratch-resistant

SG VINTAGE AR+

PRODUCT CHARACTERISTICS

	NA	SA
Surface material = Base material	PMMA AR+	
Back side material	PU-leather	
Material thickness mm	2,8	2,93
Temperature resistance	until 50 °C	
Wet room suitability	■■■■□	
Abrasion resistance	■■■■■■■	
Rolled packable	—	—
Smallest bending radius mm	1000	
Weight/panel kg	~ 7,8	~ 8,4

PROCESSING

	NA	SA
Cutting, punching	—	—
Drilling	✓	✓
Sawing (supported by a panel)	✓	✓
Milling	—	—
Laser cutting	✓	✓
Hot bending	—	—
PVA pressing	✓	—
Digital printing	✓*	
Screen printing	✓*	

* own printing test required, samples are gladly provided.

EXTRA EQUIPMENT | ACCESSORIES

	NA	SA
PVA pre-treatment	—	—
Special sizes	On request	
Further thicknesses	—	

	NA	SA
Magnetic from 3 sheets	✓	
Cuttings	✓	
Flammability ASTM E84	—	
Flammability EN13501-1	—	



SG LUXURY Bronze AR+

2600 x 1000 | **NA** 17820 | **SA** 17841



SG LUXURY Gold AR+

2600 x 1000 | **NA** 17819 | **SA** 17840



□ SG LUXURY Bronze AR+

2600 x 1000



SIBUGLAS scratch-resistant

SG LUXURY AR+

PRODUCT CHARACTERISTICS

	NA	SA
Surface material = Base material	PMMA AR+	
Back side material	PU-leather	
Material thickness mm	2,8	2,93
Temperature resistance	until 50 °C	
Wet room suitability	■■■■□	
Abrasion resistance	■■■■■■■	
Rolled packable	—	—
Smallest bending radius mm	1000	
Weight/panel kg	~ 7,8	~ 8,4

PROCESSING

	NA	SA
Cutting, punching	—	—
Drilling	✓	✓
Sawing (supported by a panel)	✓	✓
Milling	—	—
Laser cutting	✓	✓
Hot bending	—	—
PVA pressing	✓	—
Digital printing	✓*	
Screen printing	✓*	

* own printing test required, samples are gladly provided.

EXTRA EQUIPMENT | ACCESSORIES

	NA	SA
PVA pre-treatment	—	—
Special sizes	On request	
Further thicknesses	—	

	NA	SA
Magnetic from 3 sheets	✓	
Cuttings	✓	
Flammability ASTM E84	—	
Flammability EN13501-1	—	





SG OLD Platin AR+

2600 x 1000 | NA 18067 | SA 18001



□ SG OLD Platin AR+

2600 x 1000



SIBUGLAS scratch-resistant

SG OLD Platin AR+

PRODUCT CHARACTERISTICS

	NA	SA
Surface material = Base material	PMMA AR+	
Back side material	PU-leather	
Material thickness mm	2,8	2,93
Temperature resistance	until 50 °C	
Wet room suitability	■■■■□	
Abrasion resistance	■■■■■■■	
Rolled packable	—	—
Smallest bending radius mm	1000	
Weight/panel kg	~ 7,8	~ 8,4

PROCESSING

	NA	SA
Cutting, punching	—	—
Drilling	✓	✓
Sawing (supported by a panel)	✓	✓
Milling	—	—
Laser cutting	✓	✓
Hot bending	—	—
PVA pressing	✓	—
Digital printing	✓*	
Screen printing	✓*	

* own printing test required, samples are gladly provided.

EXTRA EQUIPMENT | ACCESSORIES

	NA	SA
PVA pre-treatment	—	—
Special sizes	On request	
Further thicknesses	—	

	NA	SA
Magnetic from 3 sheets	✓	
Cuttings	✓	
Flammability ASTM E84	—	
Flammability EN13501-1	—	





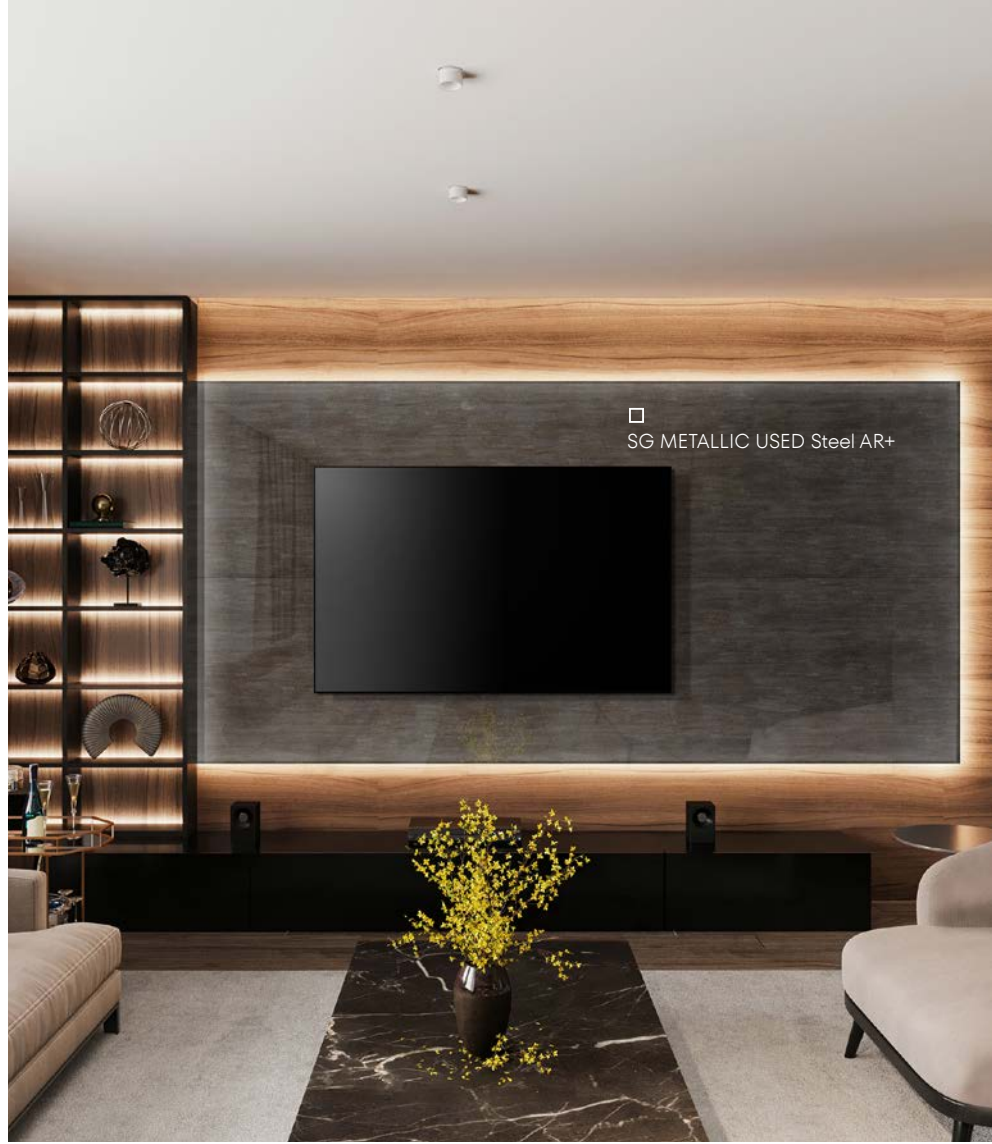
NEW

SG METALLIC USED Steel AR+
2600 x 1000 | NA 28422 | SA 28424



NEW

SG METALLIC USED Sand AR+
2600 x 1000 | NA 28423 | SA 28425



□ SG METALLIC USED Steel AR+

2600 x 1000



SIBUGLAS **scratch-resistant**

SG METALLIC USED AR+

PRODUCT CHARACTERISTICS

	NA	SA
Surface material = Base material	PMMA AR+	
Back side material	PU-leather	
Material thickness mm	2,8	2,93
Temperature resistance	until 50 °C	
Wet room suitability	■■■■□	
Abrasion resistance	■■■■■■■	
Rolled packable	—	—
Smallest bending radius mm	1000	
Weight/panel kg	~ 7,8	~ 8,4

PROCESSING

	NA	SA
Cutting, punching	—	—
Drilling	✓	✓
Sawing (supported by a panel)	✓	✓
Milling	—	—
Laser cutting	✓	✓
Hot bending	—	—
PVA pressing	✓	—
Digital printing	✓*	
Screen printing	✓*	

* own printing test required, samples are gladly provided.

EXTRA EQUIPMENT | ACCESSORIES

	NA	SA
PVA pre-treatment	—	—
Special sizes	On request	
Further thicknesses	—	

	NA	SA
Magnetic from 3 sheets	✓	
Cuttings	✓	
Flammability ASTM E84	—	
Flammability EN13501-1	—	



NEW

SG CLASSY Gold AR+

2600 x 1000 | NA 28417 | SA 28419



2600 x 1000



SIBUGLAS scratch-resistant

SG CLASSY Gold AR+

PRODUCT CHARACTERISTICS

	NA	SA
Surface material = Base material	PMMA AR+	
Back side material	PU-leather	
Material thickness mm	2,8	2,93
Temperature resistance	until 50 °C	
Wet room suitability	■■■■■□	
Abrasion resistance	■■■■■■■■■	
Rolled packable	—	—
Smallest bending radius mm	1000	
Weight/panel kg	~ 7,8	~ 8,4

PROCESSING

	NA	SA
Cutting, punching	—	—
Drilling	✓	✓
Sawing (supported by a panel)	✓	✓
Milling	—	—
Laser cutting	✓	✓
Hot bending	—	—
PVA pressing	✓	—
Digital printing	✓*	
Screen printing	✓*	

* own printing test required, samples are gladly provided.

EXTRA EQUIPMENT | ACCESSORIES

	NA	SA
PVA pre-treatment	—	—
Special sizes	On request	
Further thicknesses	—	

	NA	SA
Magnetic from 3 sheets	✓	
Cuttings	✓	
Flammability ASTM E84	—	
Flammability EN13501-1	—	



SG Hollywood

2600 x 1000 | NA 23116

On the protective film of the reverse side is a label "Reverse side / Processing side". SG Hollywood always has to be processed from the reverse side.

□
SG Hollywood



Photo: © Form Factory

SIBUGLAS**SG Hollywood****PRODUCT CHARACTERISTICS**

	NA
Surface material = Base material	PMMA
Back side material	PET
Material thickness mm	3,1
Temperature resistance	until 50 °C
Wet room suitability	■■■■□
Abrasion resistance	■■■□□□□
Rolled packable	—
Smallest bending radius mm	1000
Weight/panel kg	~ 9,3

PROCESSING

	NA
Cutting, punching	—
Drilling	✓
Sawing (supported by a panel)	✓
Milling (supported by a panel)	✓
Laser cutting	✓
Hot bending	On request
Thermoforming	On request
Digital printing	✓*
Screen printing	✓*

* own printing test required, samples are gladly provided.

EXTRA EQUIPMENT | ACCESSORIES

	NA
Special sizes (for absorbent substrate)	On request
Further thicknesses	On request

	NA
Cuttings	✓
Flammability ASTM E84	—
Flammability EN13501-1	—



LEGEND

PRODUCT CHARACTERISTICS
PROCESSING
EXTRA EQUIPMENT & ACCESSORIES

PRODUCT CHARACTERISTICS

To answer your questions as quickly as possible, our team has worked out a technical table with product characteristics, extra equipment and much more for each of our products:

NA NON-ADHESIVE

Non-adhesive design panels can be bonded to absorbent substrates in two different ways, depending on the area of application. Bonding with white glue (PVA) and bonding with Cartridge adhesive and putty adhesive.

SA SELF-ADHESIVE

SA - the back of the design sheet is equipped with an adhesive layer. For this we use high-quality acrylic adhesive substance.

Self-adhesive (SA) sheets are ideally suited to non-absorbent surfaces such as coated MDF/chipboard, glass, metal, plastic, etc.

Exception: NATURE-LINE see page 122

Whenever possible, self adhesive SIBU DESIGN products should be processed within 12 months.

Self-adhesive (SA) sheets are unsuitable for use on ceilings. Alternative processing options are available on request.

SURFACE MATERIAL

In a changeable world we focus on lastingness and high standards by using 100% PVC-free surfaces. We make a distinction between:

- **ABS = Acrylonitrile butadiene styrene**
- **Print**
- **Impregnated paper = paper with protective varnish**
- **PET = Polyethylene terephthalate (UV lacquer for the AR version)**
- **PET/fibre = Polyethylene terephthalate (synthetic fibre)**
- **PMMA = Polymethyl methacrylate**
- **PMMA AR+ = Polymethyl methacrylate with AR+ scratch resistant coating**
- **PP = polypropylene**
- **PU-leather = Polyurethane/synthetic leather surface**

All variations are optically outstanding and also fascinate by their unique haptics. They correspond to the highest demands and they are suited especially for the interior area.

BASE MATERIAL

For most of our products we use as base material a specially developed, highly impact resistant polystyrene type (HIPS). HIPS distinguish particularly by robustness, high impact and a very low weight.

Scratch-resistant PMMA is employed for the SIBUGLAS product group.

A backing made of natural fibres is used in the sustainable product line NATURE-LINE.

- **ABS = Acrylonitrile butadiene styrene**
- **HIPS = high impact polystyrene**
- **HIPS, PE foam = high impact polystyrene and Polyethylene foam**
- **HPVC = Hard polyvinylchlorid**
- **Natural fibre**
- **PMMA = Polymethylmethacrylate**
- **PP-glass fibre = Polypropylene with fibreglass**
- **PS = Polystyrene**

Reverse side of SIBUGLAS panels:

- **PU-leather = Polyurethane synthetic leather surface**
- **Paper = printed paper**

MATERIAL THICKNESS

The given material thicknesses refer to the stock program in non adhesive (NA) and self adhesive (SA) version.

MAXIMUM RELIEF HEIGHT

With the given data we define the highest position of the respective design in non-adhesive (NA) and adhesive (SA) version.

TEMPERATURE STABILITY

Already during development stage our SIBU DESIGN sheets are tested in special thermo-containers stuck on ground as well as unstuck with high temperatures and high air humidity.

Only the very best qualities correspond to our strict directives. The given data of the temperature stability refer to the lasting application of the product stuck on different grounds and to the long-term using temperature also without adhesion.

WET ROOM SUITABILITY

An exposure of SIBU DESIGN sheets to humid areas is given when a design sheet is subjected to short term humidity condition. This humidity condition can occur by reason of high air humidity or by direct sprinkling water.

- Wet room suitability
- Good wet room suitability
- Limited suitability (remove splash water)
- Low wet room suitability
- Unsuitable for wet rooms

ABRASION RESISTANCE

Our technology team already tests the products during development process to be able to offer the matching product for each of your demands.

Surfaces with very good and excellent abrasion resistance have the abbreviation "AR" in the product name and scratch-resistant products can be recognized directly by the abbreviation "AR+".

- Scratch resistant (AR+)
- Excellent abrasion resistance (AR)
- Very good abrasion resistance (AR)
- Good abrasion resistance
- Normal abrasion resistance
- Low abrasion resistance
- Use only in the decoration area

ROLLED PACKABLE

Basically our design sheets are packed flat on pallets. However, in order to dispatch small consignments as favourably as possible, we have developed a packaging carton in which many of our design sheets can be packed rolled as well.

Number of panels and whether the decor side is rolled inside or outside can be found in the technical table of the respective product.

SMALLEST BENDING RADIUS

The given data refer to the smallest bending radius for concave or convex fixing. For all design sheets – with the exception of MultiStyle – all sheet edges must be fixed mechanically. For MultiStyle there is no need for mechanical fixing!

WEIGHT PER PANEL

The panel weight is given in kg and can be found in the technical table of the respective product.

TOLERANCES

Machine-related dimensional and angle tolerances:
+/- 2.0 mm in relation to 1,000 mm

Temperature-related dimensional deviations:
+/- 0.7 mm in relation to 1,000 mm at a temperature change of 10 °C

SURFACE PROTECTION

A protective film (Polyethylene/PE) protects our surfaces against damages. This protective film should be removed only after the application of our design sheets.

Design panels that are delivered without a protective film are listed in the technical table of the respective product.

PROCESSING

All mechanical processing must always be carried out from the decorative surface. Please consider the respective technical table of the selected product to ensure that the processing step is permissible for this product.

CUTTING

A majority of our decorative panels are easy to cut with a wallpaper knife. Simply scarve the surface (decor side) and break over the edge. For self-adhesive products (SA), the adhesive or foil must be cut through after breaking over the edge on the reverse side. Please always use good-cutting knives.

For machine cutting, we recommend to use paper or veneer cutting machines.

PUNCHING

Band steel cutting is recommended for design sheets in thickness from 1 up to 1.5 mm.

DRILLING

All SIBU DESIGN sheets can be drilled from the decor side.

All drillings must be carried out on a stable underlay (even MDF Board).

Drill recommendation: Wood drills, Forstner drills and hard metal drills – each with a center punch with two pre-cutters.

Core drills for wood can also be employed, but in this case it is essential that in the area next to the drilling the patterned sheet is attached firmly to a stable underlay.

SAWING

SIBU guideline values:

Material thicknesses of up to 1 mm:
HW 280x3.2 / 2.2x30 Z60 / 12.46-18.08 WZ

Thicker than 1 mm:

HW 250x3.2 / 2.2x30 Z40 / 19.63 WZ/FA

HW 250x3.2 / 2.2x30 Z40 / 19.63 FZ/TR

(speed 6000 rpm, progressive feed of up to 25 m/min).

For LEATHER-LINE and FABRIC-LINE:

HW 255x2.8 / 2.0x30 Z80 / 10.01 FZ WZ

(speed 6000 rpm, progressive feed of up to 10 m/min).

The best result is achieved with MDF underlay (4 mm) above and below, slow progressive feed and high speed.

*HW (hard metal material), WZ/FA (alternating teeth/bevelled edge), FZ (flat teeth), TR (trapezoidal teeth)

For SIBUGLAS:

Sheets can be cut with jig, hand-held circular, panel and circular table saws. During cutting on the reverse side, the underlay should also be sawn through. Then deburr all cut edges.

Select the speed and feed that are adapted to the saw blade. Use sharp cutting tools!

The generation of heat should be constantly avoided, as this can result in material tension.

Cutting to length using a hand-held or plunge cut circular saw
Cut from the reverse side and use a stable underlay. Recommended saw blade: 160x2.2 hard metal blade with 48 alternating teeth.

Cutting to length using a jigsaw

Set the pendulum action to zero, or at a maximum to 1 and then saw from the reverse side. The patterned sheet must lie fully on the jigsaw cutting table in order to ensure that no vibrations are created. Recommended saw blade: employ saw blades with a tooth pitch of 1.2 to max. 2.5 mm. (coarse metal saw blade / fine wood saw blade / preferably PMMA saw blades).

MILLING

For material up to 2 mm thickness:

Cutter with 3 mm diameter, rotation speed from 12000 up to 24000 rpm, progressive feed up to 12 m/min.

Decor side on top:

milling cutter with a left-hand twist, cutting right.

Decor side below:

milling cutter with a right-hand twist, cutting right.

For material with a thickness of more than 2 mm, reduce the progressive feed and use a milling cutter with a larger diameter (6 mm).

LASER CUTTING

SIBU DESIGN sheets can be processed with standard lasers. The cutting speed depends on the wattage of the laser.

Note: Place the decorative panel on the laser machine so that its reverse side is on the machine's vacuuming side. As with all standard PMMA products, it is recommended to "temper" the material after laser cutting. The high temperature of the laser causes tension in the material, which could cause tension cracks. Tempering equalises these tensions.

HOT BENDING

Heat up the SIBU DESIGN sheets from the backside – for both, internal and exterior angles.

Approximate parameters for material in 1 mm thickness:

Wire temperature: approx. 200°C, heating time: approx. 6-20 seconds -depending on the surface material and bending tool

- hot bending is outwardly (decor outside = external angle) possible
- hot bending inwards (decor inside = interior angle) possible

Additional information

- LEATHER-LINE: wrinkles along the internal angle may appear when hot bending is done inwardly
- SG Hollywood: Only an inner corner on the visible side is possible. Guideline values: Duration approx. 110 seconds at approx. 200 °C degrees (depending on the bending tool)
- SL OCEAN: Only an outer corner is possible Approximate parameters for material in 2 mm thickness: Wire temperature: approx. 200°C, heating time: approx. 30-40 seconds

THERMOFORMING

With a variety of Deco-Line products light forming, by using flat and not sharp-edged tools, is possible (avoid sharp contours and use larger radii).

With every new moulding test are to be made, in order to obtain ideal results. The tool must be adapted to the material.

PVA-PRESSING

In order to obtain a compact design board with a decorative panel with material thicknesses of 1-4 mm, the design sheet can be pressed.

Due to the rigid adhesive connection between the decorative panel and the wooden beams, the finished board does not extend anymore and can therefore either be processed seamlessly on walls, or furniture fronts can be made. Detailed instructions for PVA-pressing can be found on page 120.

PRINTING

Owing to the many differing printing and colour systems, customers must carry out a printing test. The result will depend on the respective motif. We will be pleased to provide original samples for testing.

We classify with the statements “**yes**”, “**no**” or “**on request**”.

yes: Our print tests were positive, which means that not only the print looks good, but it also passes an abrasion and test test

no: Our print tests were negative, which means that either the print did not convince visually, or various tests were not passed.

on request: our print tests were positive with additional treatments, or not all tests were passed to full satisfaction. In this case, please contact us so that we can advise you.

The final adhesion performance will set in very slowly and can take up to one week on air-drying (20 °C.).

ACCESSORIES & SPECIAL EQUIPMENT

ADHESIVE RECOMMENDATION

Solvent-free assembly adhesive without plasticizers Cartridge adhesive for strand bonding:

K1-Hybrid adhesive: Bostik H551 Supergrip Multi, Ramsauer 640

Solvent-free assembly adhesive without plasticizers Putty adhesive:

Glutolin UK, Bostik Ardaflex® Multi (tooth spatula A2, B3)

Area of application: MS polymer hybrid adhesive is ideal for bonding the SIBU DESIGN product group SIBUGLAS on absorbent and non-absorbent substrates.

Detailed information on processing with Cartridge adhesive and putty adhesive on page 117.

Carry out adhesion tests and self-tests before bonding the panels!

PVA PRE-TREATMENT

In order to be suitable for PVA bonding, depending upon the material on the reverse side, SIBU DESIGN sheets either have to be pre-treated by means of an additional production process, or roughened by using a vibration sander (80-grain sandpaper).

Being able to carry out this pre-treatment for you in our factory, we absolutely need this information together with your order.

You can find detailed information on page 118.

SPECIAL FORMATS

In addition to the standard sizes given in the OVERVIEW we offer with pleasure individually adapted product dimensions.

FURTHER THICKNESSES

In addition to the standard formats specified in the OVERVIEW, we are happy to offer customized product sizes.

MAGNETIC

All SIBU DESIGN sheets are available with a magnetic back from 3 pieces onwards. Exception - all LL ROMBO and SIBUGLAS Hollywood.

SIBU magnetic foils are suitable on different metallic grounds and on magnetic colours. The exchange of design sheets thereby becomes a child's play! The application fields for the SIBU DESIGN magnetic program are nearly unlimited – for shop-window decoration, shop fitting and fair design or in the furniture area, decoration field and for all kinds of displays.

Self-adhesive SIBU metal film is employed when a suitable metallic ground is lacking. The metal film can be ordered as a sheet (2,600x1,000 mm) or roll (14 or 29 m)

CUTTINGS

You want to get customized sheets or cuttings? Please contact us that we can offer the best possible solution to you. With a cutting length up to 3.2 meter and a punching and sawing length up to 3 meter we are able to meet your requirements and needs promptly.

FIRE CLASSIFICATION

The products from the stock program are normally flammable and correspond to the fire safety regulations according to DIN 4102 B2 or UL Standard 94 measured value: 94 HB as well as EN 13501-1 classification (E).

Marked products **FR** are available in flame retardant version on request, on a different carrier material. Manufacturer's certificate of compliance of the following standards are available: EN 13501-1 and ASTM E 84. Info sheets on demand!

PROCESSING INSTRUCTION

BASIC RULES OF PROCESSING

SUBSTRATE PREPARATION FOR BONDING

BONDING OF SELF-ADHESIVE
DESIGN PANELS (SA)

PROCESSING OF NON-ADHESIVE
DESIGN PANELS (NA) WITH PUTTY ADHESIVE

BONDING WITH CARTRIDGE ADHESIVE

PRESS DECORATIVE PANELS WITH WHITE
GLUE (PVA GLUE)

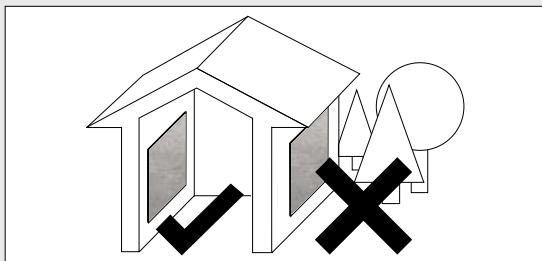
SELF-ADHESIVE DESIGN PANELS BONDED
ONTO COATED WOOD BASED SHEETS
INCLUDING EDGES AND MILLING

PROCESSING INFORMATION
NATURE-LINE

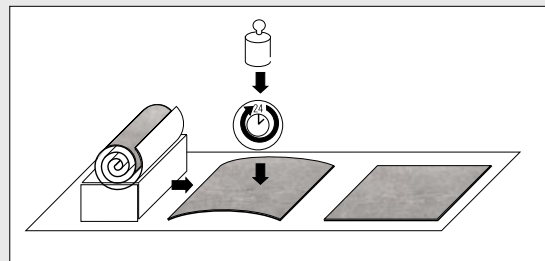
BASIC RULES OF PROCESSING

For worry-free processing and an optimal end result, you only have to take a few very important things into account! Below you will find the basic rules, as well as information on individual processing options and processing tips.

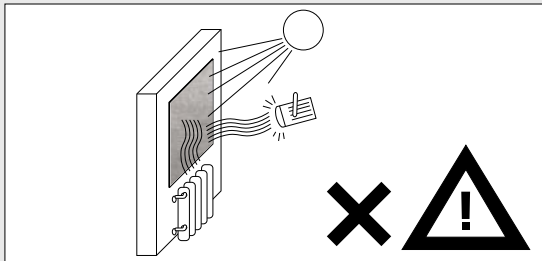
Please note that our product groups are sometimes structured differently and that some of them can also be processed differently. **Therefore, please always find out on the respective product page whether a specific processing is possible.**



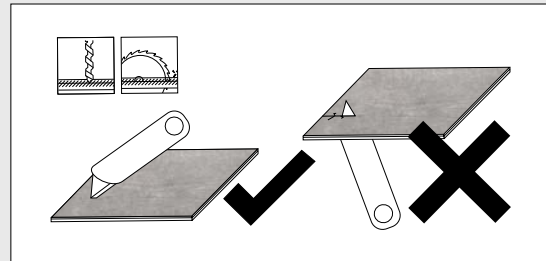
The decorative panels are only suitable for indoor use.



Design panels that are delivered rolled should be laid flat for at least 24 hours. Additional weighting improves flatness.



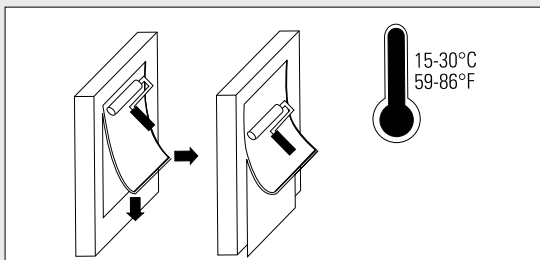
Not recommended for use near an open fire or sources of intense heat.



Mechanical processing such as cutting, sawing, punching or drilling of the design panels is always carried out on the top side of the decor and not on the back.

It is imperative that sheet flapping be avoided totally during all working phases.

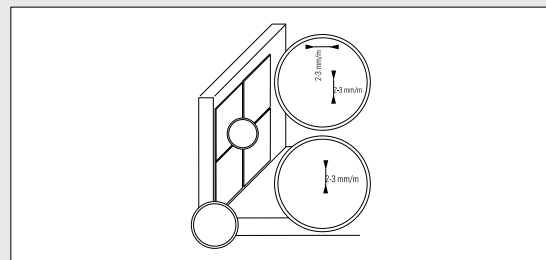
Always lay the sheets out flat and if necessary pin them down.



Ideal processing temperature +15°C to +30°C.

The decorative panels must be acclimatised, i.e. brought to room temperature before processing.

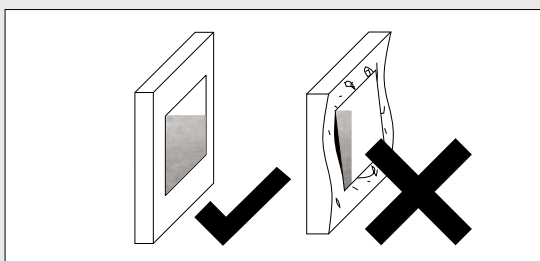
This serves to avoid the formation of condensate on the adhesive surface and to reduce the expansion of the panel due to reduced temperature differences.



The majority of our products are made of thermoplastics, which expand by around 0.7 mm – measured over a length of 1 m – when the temperature rises by 10 °C. For this reason, an expansion joint of approx. 2 – 3 mm must be allowed for at the board edges.

If the ambient temperature is high or the temperature fluctuates sharply, the expansion joint should be enlarged or the panel format selected smaller.

Tips for avoiding expansion joints: Either press the decorative panels or use the product group NATURE-LINE.



The substrate must be free of loose parts, dry, smooth, and free of dust, dirt, grease, wax and silicone. Depending on whether the substrate is absorbent or non-absorbent, various bonding options are used.

In the case of convex and concave substrates, mechanical fastening in the edge area is absolutely necessary.



The right processing depending on the substrate:

absorbent substrate:

- (e.g. raw MDF, plasterboard,...)
- Bonding with cartridge adhesive and putty adhesive see page 117
- Pressing decorative panels see page 118

non-absorbent substrate:

- (e.g. coated plate, glass, ect.)
- self-adhesive decorative panels see page 116

PROCESSING INFORMATION

SUBSTRATE PREPARATION FOR BONDING

The substrate must be free of loose parts, dry, smooth, and free of dust, dirt, grease, wax and silicone. Never mount SIBU design panels on uneven surfaces, as this results in a loss of visual quality.

In the case of convex and concave substrates, mechanical mounting in the edge area is absolutely necessary (except for MULTISTYLE)!

Detect underground:

Simply drop a waterdrop onto the surface - if it doesn't soak in and stays there, it's a non-absorbent surface.

Non-absorbent substrate:

To achieve maximum adhesion, always clean non-absorbent surfaces with alcohol (ethanol, isopropyl alcohol).

Self-adhesive panels (SA) are best suited for non-absorbent surfaces such as coated MDF/chipboard, glass, metal, plastic, etc.

Absorbent substrate:

For absorbent substrates such as raw chipboard, MDF, plasterboard or smoothed brickwork, a solvent-free adhesive must be used, which is suitable for both the substrate and the polystyrene material (carrier material). See adhesive recommendations on page 111.

BONDING OF SELF-ADHESIVE DESIGN PANELS (SA)

Our self-adhesive design panels, marked with the abbreviation „SA“, have a strong adhesive layer on the back of the decorative panel - made of high-quality acrylates or synthetic rubber - and can therefore be attached quickly and easily to non-absorbent surfaces.

The self-adhesive design panels are glued directly to the substrate, taking into account an expansion joint - without additional adhesive.

With self-adhesive products from the NATURE-LINE, the expansion joint can be omitted.

With self-adhesive design sheets (SA) - pull off the adhesive cover step by step, do not touch the adhesive surface and press as firmly as possible onto the subsurface. Absolutely avoid the formation of bubbles (air pockets).

For large areas, it is best to use a medium-hard rubber hand roller with a width of approx. 170 mm. The final adhesion is reached after 24 hours at room temperature.

Self-adhesive design panels (SA) are not suitable for ceiling applications. Alternative processing options are available upon request.

PROCESSING OF NON-ADHESIVE DESIGN PANELS (NA) WITH PUTTY ADHESIVE

The putty adhesive (solvent-free assembly adhesive without plasticizers) Glutolin UK and Bostik Ardaflex® Multi are perfect if you want to glue a non-adhesive design panel (NA) directly to an absorbent substrate. This is simply applied to the substrate with a spatula and the design panels are glued, taking into account an expansion joint.

Area of application: Putty adhesive Glutolin UK and Bostik Ardaflex® Multi (tooth spatula B3) are ideal for bonding SIBU DESIGN products to absorbent, even surfaces such as wood, MDF, plywood, chipboard, plasterboard or smoothed masonry.

The processing guidelines for the respective adhesive must be observed.

BONDING WITH CARTRIDGE ADHESIVE

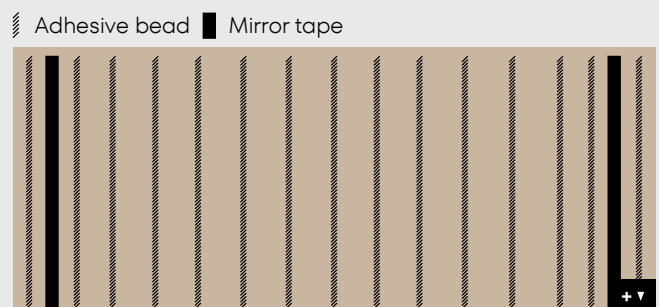
Suitable for the product group SIBUGLAS

Strand bonding:

On the reverse side of the sheet: vertical positioning of a bead at a distance of 10 mm from the edge of the sheet or the profile leg, then position a mirrored adhesive tape at a distance of 10 mm.

It is recommended that the protective strip on the mirrored tape be removed prior to the further processing phases.

Apply vertical beads of adhesive to the reverse side of the sheet at intervals of approx. 10 mm to the mirrored adhesive tape. (Depending on the underlying surface, the beads should have a height of at least 4 mm.) Apply the other beads at a distance of 60 mm.



The illustration does not show the entire length of the panel

Bring the sheet into position without any drying time and then press it down onto the prepared surface by means of vertical strokes with a soft wallpaper roller.

The gluing can also be done without mirror adhesive tape!

Advantage: The sheet can be positioned much easier.

Disadvantage: The sheet has to be temporarily attached until the adhesive beads have cured in order to prevent the plate from slipping unintentionally.

POINTING WITH SILICONE

Suitable for the product group SIBUGLAS

Once the adhesive has hardened, the joints can be sealed with silicone.

Immediately remove the protective film from the sheet and any possible adhesive residues.

PRESS DECORATIVE PANELS WITH WHITE GLUE (PVA GLUE)

DESCRIPTION – STRUCTURE

SIBUGLAS decorative sheet

PVA white glue

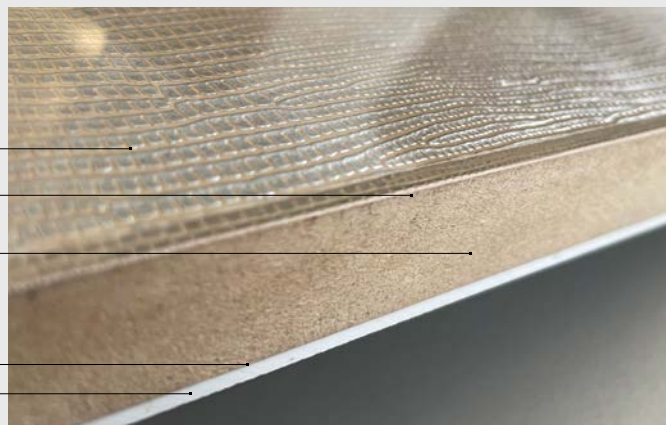
Wood based sheet

minimum thickness of 16 mm!

Use thicker wood based sheets for larger formats!

PVA white glue

Balancing sheet



Please refer to the technical spreadsheet of the product to see if pressing is possible.

PRE-TREATMENT OF THE NON-ADHESIVE DESIGN PLATE

If the design requires a pretreatment, please take a look at the technical spreadsheet of the product. However, the general rule is that products from the SIBUGLAS product group do not require any pretreatment.

Order pre-treatment from SIBU DESIGN

Since the production process is not done automatically, the PVA pretreatment must be advised with the order.

The pretreatment carried out by SIBU DESIGN is an industrial treatment with electrons to increase the surface tension.

Since the effect of the treatment decreases again over time, the design panel pretreated by SIBU must be pressed within 2 months after the delivery date.

Carry out pre-treatment yourself

The back of the decorative panel can be roughened using an orbital sander or random orbital sander. We recommend sandpaper with a 80 grains.

APPROPRIATE BALANCING SHEET

So that the finished pressed panel remains flat and distortion free, it is necessary to choose a suitable balancing sheet that matches the decorative panel according to its material characteristics and thickness.

On request, we can offer technically coordinated white grained balancing sheets.

The following items are suitable for the product groups listed:

25880 PMMA Balance Sheet White NA PVA

2800x1250x2
SIBUGLAS

25879 PMMA Balance Sheet White NA PVA

2600x1010x2
SIBUGLAS

25878 HIPS Balance Sheet White NA PVA

2800x1250x0,8
DECO-LINE, STRUCTURE-LINE, FABRIC-LINE, LEATHER-LINE

25877 HIPS Balance Sheet White NA PVA

2610x1010x0,8
DECO-LINE, STRUCTURE-LINE, FABRIC-LINE, LEATHER-LINE

If the Balance Sheet has not been pressed within 2 months, we recommend a check on the surface tension of the reverse side and if required, its subsequent surface treatment (sandpaper).

APPLY WHITE GLUE

- Lay the acclimatized SIBU decorative panel, balancing sheet and wooden based panel next to each other on a straight, clean and sufficiently large working table.
- The wooden based panel is cut approx. 10 mm bigger than the design sheet/balancing sheet.
- First of all put the PVA glue on the back of the design and balancing sheet using a glue roller – as evenly and over the entire surface as much as possible!
- Then both SIBU DESIGN sheets are put in the middle of the wooden support panel as soon as possible. No direct application of glue on the wooden carrier board – this can have a negative effect on the flatness.
- If the design sheet does not have a wrinkle-free protection foil due to transport or storage conditions, it must be removed before the pressing process.
- Afterwards the composite goes into the plate press.

SIBUGLAS with synthetic fibre backing: The consumption of PVA white glue is slightly higher due to the absorbent synthetic fibre backing. The glue consumption is approx. 200 – 300 g/m². The synthetic fibre should have a wet adhesive sheen shortly before gluing.

PRESSING IN THE PLATE PRESS

Do not press with too much pressure, use your own experience and know-how!

If the guidelines for the pressing time of the used white glue differ, the basic rule is: add 1 minute of pressing time per mm of material thickness or additional enclosure such as foam rubber.

STRUCTURE-LINE, FABRIC-LINE, LEATHER-LINE

Guideline: The press force should be around 2 kg/cm^2 (0.2 N/mm^2), the temperature around 45°C and the pressing time approx. 15 minutes.

During the pressing process a medium-hard foam rubber mat with a thickness of approx. 5 mm must be put between the pressing sheet and the decorative side of the sheet.

It achieves an even pressure distribution and at the same time it avoids unwanted pressure marks caused by dirt particles between the press plate and the design panel.

DECO-LINE

Guideline: The press force should be around 2 kg/cm^2 (0.2 N/mm^2), the temperature around 45°C and the pressing time approx. 15 minutes.

Flat design panels are better being pressed without a foam rubber. The foam rubber could make the surface seem too uneven. In order to easier get a smooth surface, ask us for decorative sheets in 2mm thickness.

ATTENTION: When pressing mirror or high-gloss products, an absolutely undamaged, clean pressing plate is required.

SIBUGLAS

Guideline: The press force should be around 2 kg/cm^2 (0.2 N/mm^2), the temperature around 30°C and the pressing time approx. 30 minutes.

- As soon as the sheets are removed from the press, they must be stored flat in stack pressure.
- A really even base is important for the flatness of the bonded panel!
- Cover the stack with 19 mm chipboard so that the top board can also be laid out flat.
- Let the panels cool down in the stack after the pressing process – preferably overnight (for at least 12 hours).

A second option for small quantities is to press the panels in the machine overnight at around 20°C . This type of processing does not require stack pressure afterwards.

PROCESSING OF THE PRESSED DESIGN PANEL

Glued and pressed panels can be processed simply with most of the standard woodworking machines and woodworking tools.

During the process, the PE protective film must remain on the surface. The use of suitable and well-cutting tools prevents damage. Ideal machine parameters, tool design and cutting speeds have to be observed individually with a sample production before the manufacture.

The finished pressed design panels can be easily cut to size with a saw and then be provided with commercial edges made of plastic, aluminium or wood.

SELF-ADHESIVE DESIGN PANELS BONDED ONTO COATED WOOD BASED SHEETS

including edges and milling

Suitable for the product group SIBUGLAS

MATERIAL REQUIREMENTS

SIBU decorative sheet:
SA dimension: 2600 x 1000 mm, self-adhesive

Wood based sheet:
Wood based sheet coated on both sides, dimensions:
2600 x 1000 mm

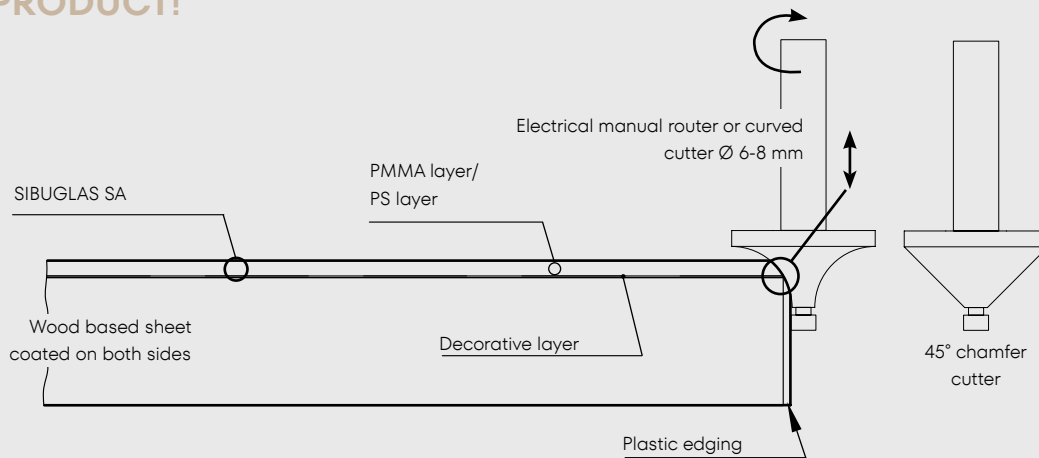
Counter-pressure:
Not required

Edge material:
All standard furniture edging

PROCESSING STEPS

1. Clean the coated wood sheet.
2. Remove the protective film on the adhesive side of the design sheet.
3. Bond the design sheet onto the wood based sheet using a rubber roller.
4. Immediately cut the bonded sheets into the desired final dimensions (saw).
5. Place the edgings on the edge gluing machine.
6. **Using an electrical manual router, cut a rounded or chamfered edge exactly up to the point of transition from the transparent PMMA layer/PS layer to the structured layer. Please see sketch!** In combination, the edge material and the transparent PMMA layer/PS layer give the resultant radius or chamfer. The thicker the edge material, the wider the facet.

"FACET MILLING IS THE PREREQUISITE FOR AN EDGED END PRODUCT!"



PROCESSING NATURE-LINE

Underground:

Bonding of the self-adhesive NATURE-LINE product panels without expansion gaps on all substrates.

The substrate must be dry, smooth, free of loose parts, dust, dirt, grease, wax and silicone.

Mechanical processing:

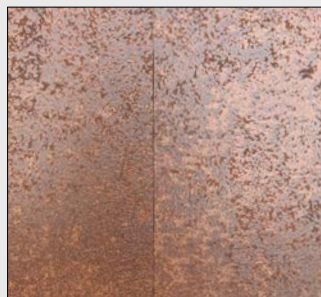
must always be done from the decor surface. The products can be easily cut with a wallpaper knife on site.

Bonding:

- Remove the adhesive cover step by step, avoiding contact with the adhesive surface and press as firmly as possible onto the subsurface. (Absolutely avoid the formation of bubbles / air pockets)
- For large areas, it is best to use a medium-hard rubber hand roller with a width of approx. 170 mm.
- The final adhesion is reached after 24 hours at room temperature.



Easy format customization



Processing without expansion gaps



Thin and dimensionally stable

STORAGE

SIBU DESIGN sheets must always be kept in indoor stock, no storage outside!

The following must be taken into account:

- Design sheets to be stored flat, rolled packed design sheets should be unpacked and laid out flat and - if necessary - subjected to additional weight to improve flatness (Use carton underlay and weigh down the entire sheet in order to prevent damage.)
- Store the uppermost plate in the pile with decor side down.
- Protect SIBU products from UV rays.
- Do not expose SIBU products to moisture or humidity.
- Protect material from dirt, dust and mechanical damages.
- A permanent storage of more than 3 months at a temperature less than 0 °C or more than +30 °C may impact the quality of our design sheets and should be avoided.

SIBUGLAS:

Wrap the sheets in foil, enclose and seal the silicate bag. This prevents possible rippling in the edge area of the panels due to the effects of air humidity.

TRANSPORT

In general, for the transport of SIBU products pay attention to protect them from dirt, UV radiation, moisture and mechanical damages.

- Use stable, flat pallets with carton bedding, the pallet should be longer than the design sheets.
- Place the uppermost design sheet on the pallet with the decor side face down. This uppermost design sheet should be protected in addition by a carton and a board (e.g., chipboard, HDF...).
- The design sheets should be protected from shifting.
- The edges and sides must be also protected (edge protection, PE foil ...)
- Avoid temperatures below – 35 °C or more than + 50 °C.
- Structured sheets to be transported on pallets with the patterns running in same direction.
- SIBU products must be acclimatized prior to processing; ideal processing temperature is approx. + 10 °C to + 30 °C.
- Before any processing of the design sheets read the attached processing instructions which you can also find on the SIBU website!
- Rolled packable - Information in the technical Table for the respective product

CLEANING

Do not use abrasive cleaners, solvent cleaners or pure alcohol!

DECO-LINE, STRUCTURE-LINE, NATURE-LINE, MULTISTYLE, SIBUGLAS: in case of light dirt by means of soft cleaning cloth (it should be free of dust and free of dirt). In case of heavy dirt by means of standard plastic or window cleaner (spray cleaners not onto the material surface, but sparingly onto the cleaning cloth).

LEATHER-LINE: Clean leather surfaces by means of standard liquid soap and then remove the soap with a humid cloth.

FABRIC-LINE: Stains caused by oil, greases and ink must be removed immediately. Vacuum the surface in case of low pollution; in case of heavy pollution, dab the stain with an absorbent cloth, then wipe it off with mild soapy water.

DISPOSAL

The keeping of healthy environment has high priority for us! We check all raw materials used for their environmental compatibility. Because not everyone has its own plastic disposal container, we pay special attention in development of new products to use only high-quality materials: materials, which may be disposed safely with the domestic waste. On

demand we are pleased to provide LGA certificates for all SIBU DESIGN sheets.

NATURE-LINE: The design panels can be disposed and recycled via waste paper and therefore environmentally friendly beyond their life cycle.

This information tool was provided according to the best knowledge and with special care. The information is based on practical experiences, test results as well as on in-house testing and corresponds to our today's state of knowledge. Detailed info sheets are available on request. No liability is accepted for misprints, norm errors and mistakes!

SIBU | DESIGN

SIBU DESIGN GmbH & Co KG

Jupiterstraße 8 / 4452 Ternberg / Austria

T: 0043 (0) 7256.6025.0 / info@sibu.at / www.sibu.at